

0.7/26/09

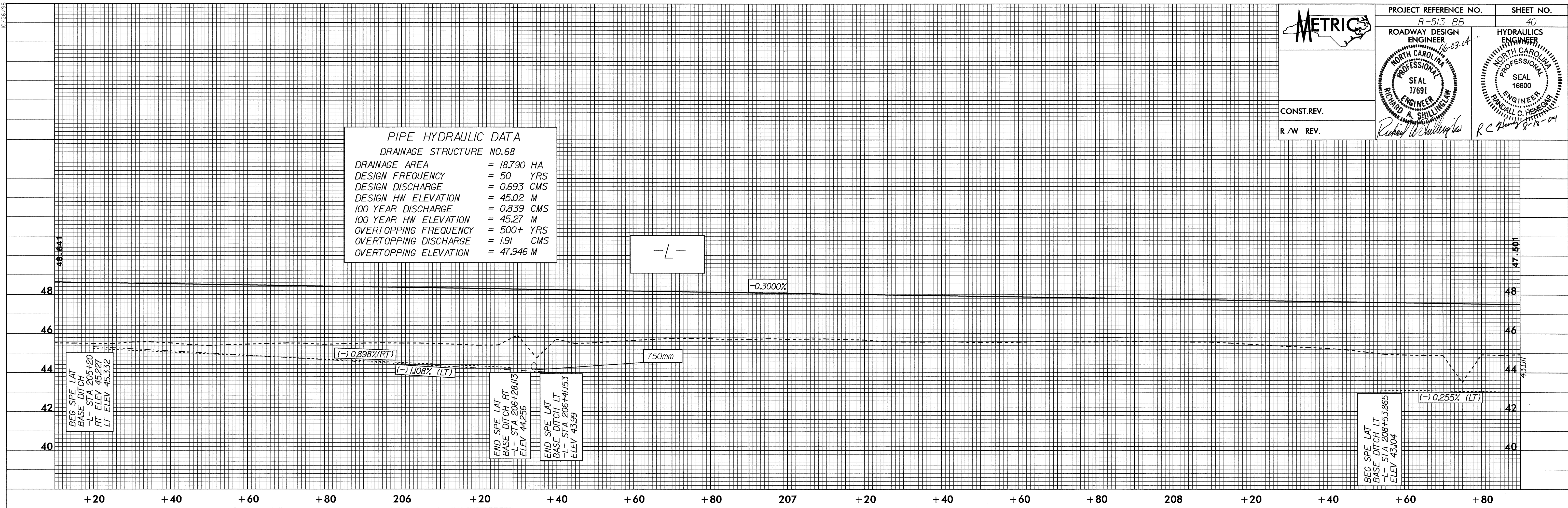


PROJECT REFERENCE NO. R-513 BB	SHEET NO. 40
ROADWAY DESIGN ENGINEER 16-03-04	HYDRAULICS ENGINEER
NORTH CAROLINA PROFESSIONAL ENGINEER SEAL 17691 RICHARD A. SHILLING	NORTH CAROLINA PROFESSIONAL ENGINEER SEAL 16600 RANDAL C. HEBERT
CONST. REV.	
R / W REV.	

PIPE HYDRAULIC DATA
DRAINAGE STRUCTURE NO.68

DRAINAGE AREA = 18.790 HA
DESIGN FREQUENCY = 50 YRS
DESIGN DISCHARGE = 0.693 CMS
DESIGN HW ELEVATION = 45.02 M
100 YEAR DISCHARGE = 0.839 CMS
100 YEAR HW ELEVATION = 45.27 M
OVERTOPPING FREQUENCY = 500+ YRS
OVERTOPPING DISCHARGE = 1.91 CMS
OVERTOPPING ELEVATION = 47.946 M

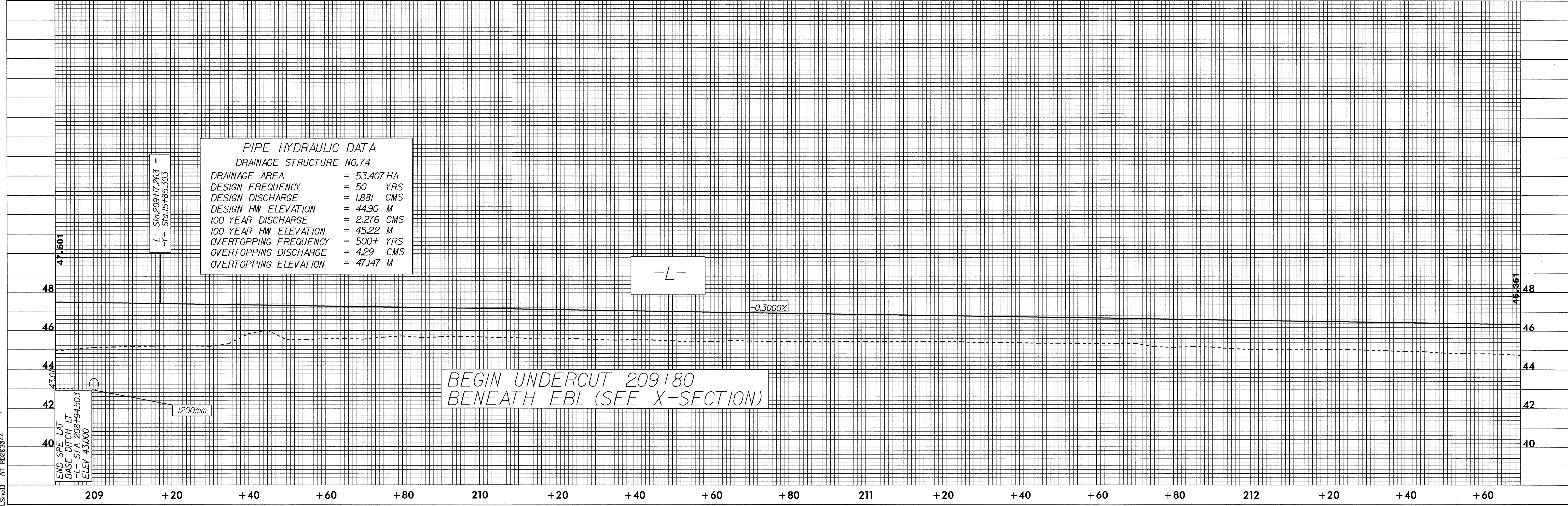
-L-



PIPE HYDRAULIC DATA
DRAINAGE STRUCTURE NO.74

DRAINAGE AREA = 53.407 HA
DESIGN FREQUENCY = 50 YRS
DESIGN DISCHARGE = 1.881 CMS
DESIGN HW ELEVATION = 44.90 M
100 YEAR DISCHARGE = 2.276 CMS
100 YEAR HW ELEVATION = 45.22 M
OVERTOPPING FREQUENCY = 500+ YRS
OVERTOPPING DISCHARGE = 4.29 CMS
OVERTOPPING ELEVATION = 47.147 M

-L-



BEGIN UNDERCUT 209+80 BENEATH EBL (SEE X-SECTION)

23-FEB-2004 15:49 T:\s\01 AT 1026204\313bb.p1