

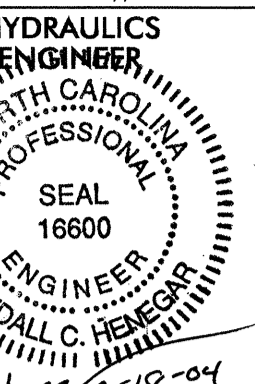
02/26/04

BM \* 29 R/R SPIKE IN BASE 1200mm HARDWOOD 85.394m LT OF  
-L- STA 213+74.119 EL 44.695



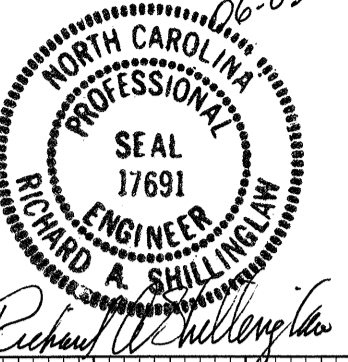
PROJECT REFERENCE NO. R-513 BB SHEET NO. 41

ROADWAY DESIGN ENGINEER 06-03-04



CONST. REV.

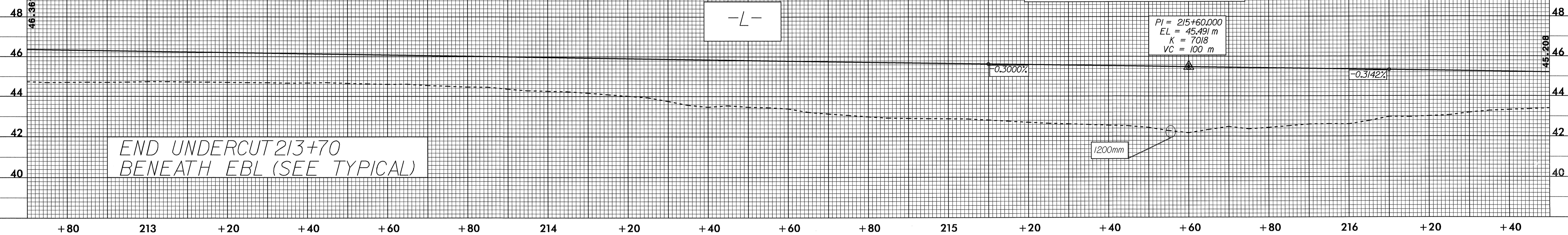
R / W REV.



R.C. Hensley 8-12-04

PIPE HYDRAULIC DATA  
DRAINAGE STRUCTURE NO.79

DRAINAGE AREA = 22.579 HA  
DESIGN FREQUENCY = 50 YRS  
DESIGN DISCHARGE = 1.03 CMS  
DESIGN HW ELEVATION = 43.34 M  
100 YEAR DISCHARGE = 1.246 CMS  
100 YEAR HW ELEVATION = 43.45 M  
OVERTOPPING FREQUENCY = 500+ YRS  
OVERTOPPING DISCHARGE = 2.804 CMS  
OVERTOPPING ELEVATION = 45.91 M



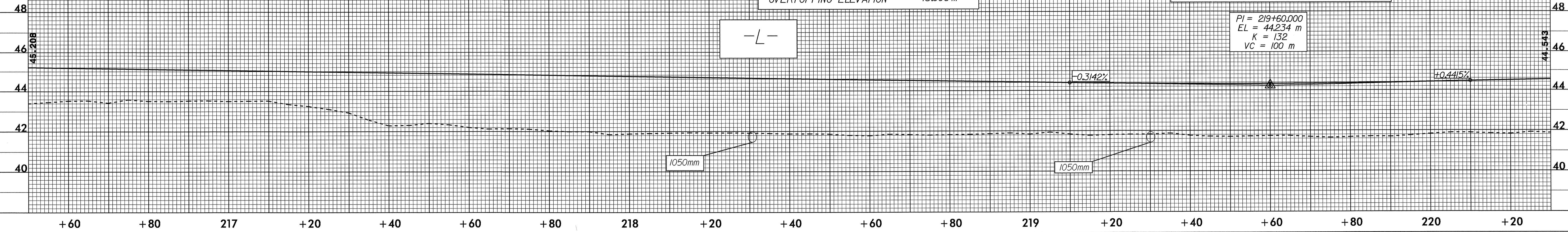
BM \* 30 R/R SPIKE IN BASE 150mm PINE 94.603m RT OF  
-L- STA 220+03.047 EL 42.712

PIPE HYDRAULIC DATA  
DRAINAGE STRUCTURE NO.81

DRAINAGE AREA = 85.611 HA  
DESIGN FREQUENCY = 50 YRS  
DESIGN DISCHARGE = 0.516 CMS  
DESIGN HW ELEVATION = 42.53 M  
100 YEAR DISCHARGE = 0.624 CMS  
100 YEAR HW ELEVATION = 42.64 M  
OVERTOPPING FREQUENCY = 500+ YRS  
OVERTOPPING DISCHARGE = 1.491 CMS  
OVERTOPPING ELEVATION = 43.996 M

PIPE HYDRAULIC DATA  
DRAINAGE STRUCTURE NO.83

DRAINAGE AREA = 85.611 HA  
DESIGN FREQUENCY = 50 YRS  
DESIGN DISCHARGE = 0.516 CMS  
DESIGN HW ELEVATION = 42.47 M  
100 YEAR DISCHARGE = 0.624 CMS  
100 YEAR HW ELEVATION = 42.57 M  
OVERTOPPING FREQUENCY = 500+ YRS  
OVERTOPPING DISCHARGE = 1.54 CMS  
OVERTOPPING ELEVATION = 43.996 M



23-FEB-2004 15:57  
T:\snel AT 10026264\F313bb.pdf