

10/26/04

BM * 31R/R SPIKE IN BASE 500mm SWEET GUM 118.129m RT OF
-L- STA 223+05.463 EL 43.124

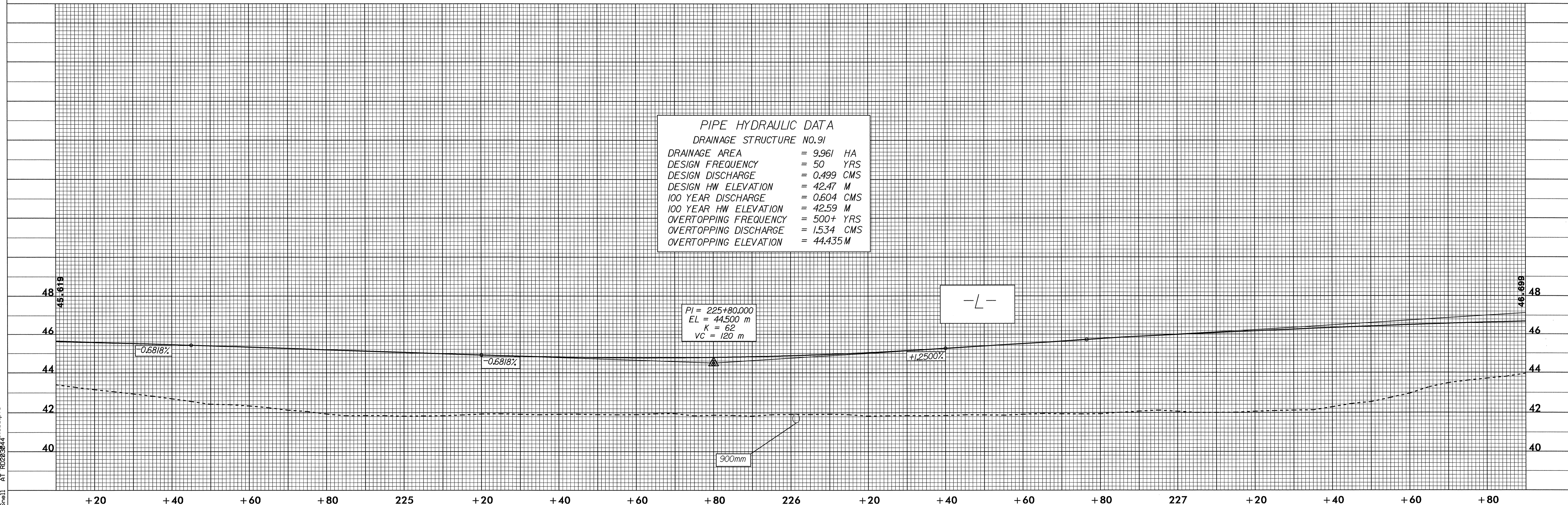
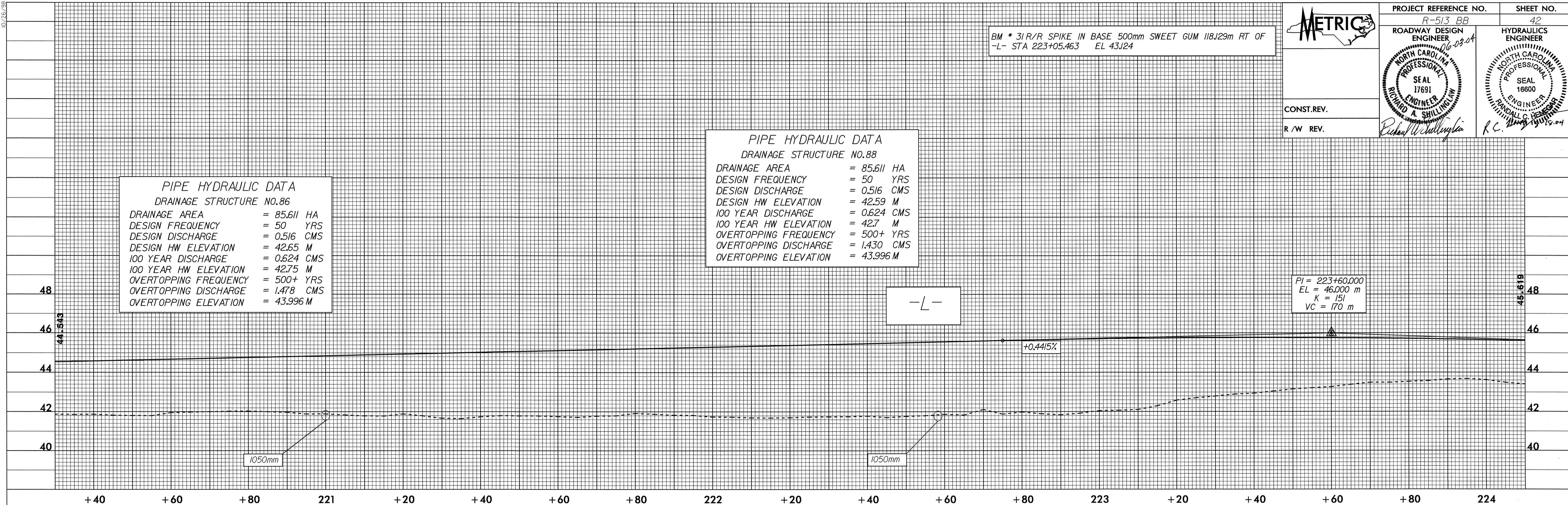


PROJECT REFERENCE NO. R-513 BB	SHEET NO. 42
ROADWAY DESIGN ENGINEER 06-03-04	HYDRAULICS ENGINEER
NORTH CAROLINA PROFESSIONAL ENGINEER SEAL 17691 RICHARD A. SHILLING	NORTH CAROLINA PROFESSIONAL ENGINEER SEAL 16600 RANDALL C. WELLS
CONST. REV.	
R / W REV.	

PIPE HYDRAULIC DATA
DRAINAGE STRUCTURE NO.86
DRAINAGE AREA = 85.611 HA
DESIGN FREQUENCY = 50 YRS
DESIGN DISCHARGE = 0.516 CMS
DESIGN HW ELEVATION = 42.65 M
100 YEAR DISCHARGE = 0.624 CMS
100 YEAR HW ELEVATION = 42.75 M
OVERTOPPING FREQUENCY = 500+ YRS
OVERTOPPING DISCHARGE = 1.478 CMS
OVERTOPPING ELEVATION = 43.996 M

PIPE HYDRAULIC DATA
DRAINAGE STRUCTURE NO.88
DRAINAGE AREA = 85.611 HA
DESIGN FREQUENCY = 50 YRS
DESIGN DISCHARGE = 0.516 CMS
DESIGN HW ELEVATION = 42.59 M
100 YEAR DISCHARGE = 0.624 CMS
100 YEAR HW ELEVATION = 42.7 M
OVERTOPPING FREQUENCY = 500+ YRS
OVERTOPPING DISCHARGE = 1.430 CMS
OVERTOPPING ELEVATION = 43.996 M

PIPE HYDRAULIC DATA
DRAINAGE STRUCTURE NO.91
DRAINAGE AREA = 9.961 HA
DESIGN FREQUENCY = 50 YRS
DESIGN DISCHARGE = 0.499 CMS
DESIGN HW ELEVATION = 42.47 M
100 YEAR DISCHARGE = 0.604 CMS
100 YEAR HW ELEVATION = 42.59 M
OVERTOPPING FREQUENCY = 500+ YRS
OVERTOPPING DISCHARGE = 1.534 CMS
OVERTOPPING ELEVATION = 44.435 M



23-FEB-2004 15:57
T:\Snel AT 10283804\513bb.pfl