

02/26/04

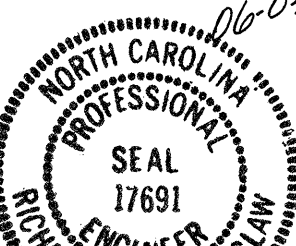
BM * 32 R/R SPIKE IN BASE 650mm PINE 90.106m RT OF
-L- STA 232+96.550 EL 42.355



PROJECT REFERENCE NO. R-513 BB SHEET NO. 44

ROADWAY DESIGN ENGINEER

HYDRAULICS ENGINEER

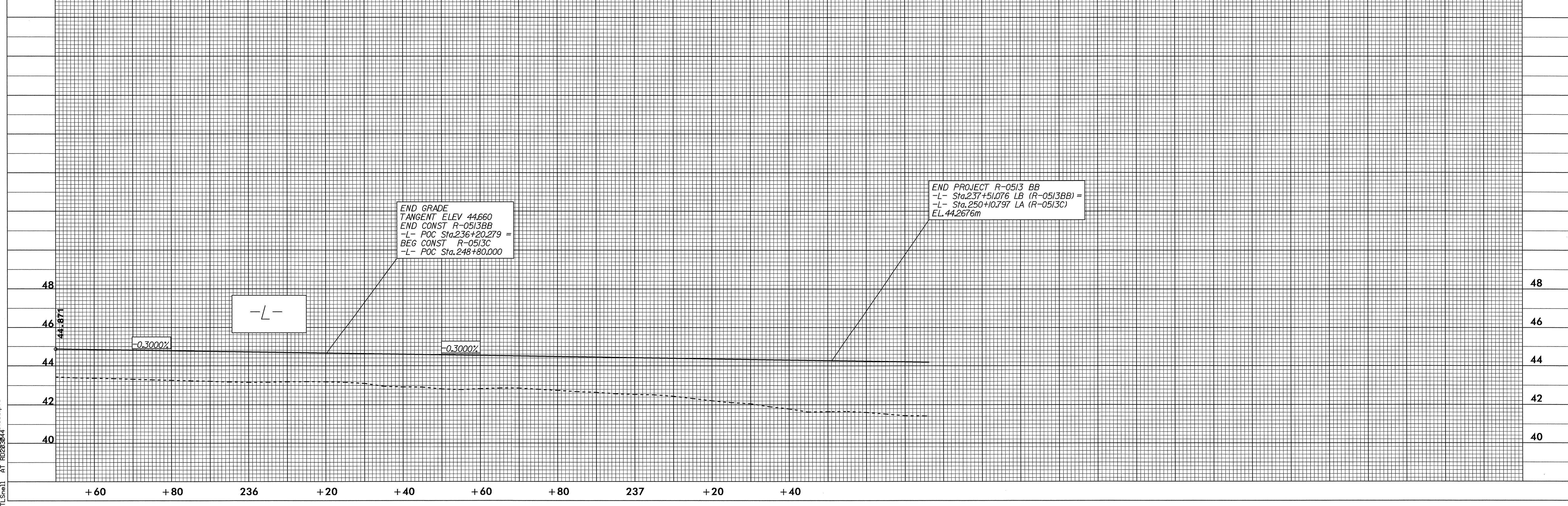
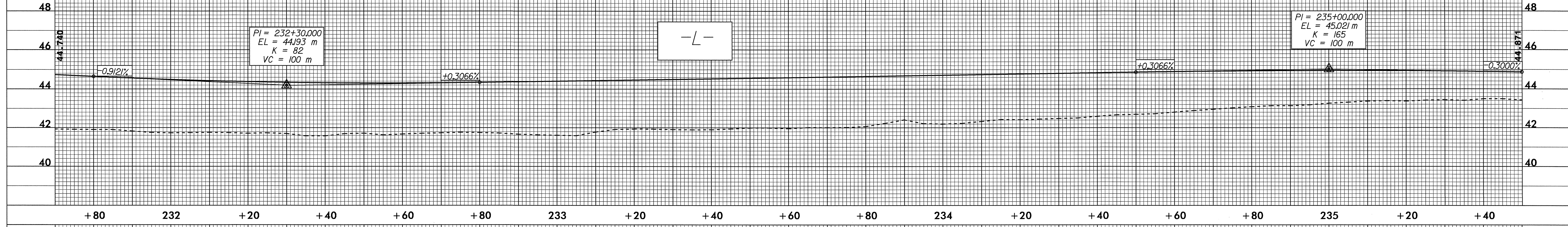


CONST. REV.

R / W REV.

Richard C. Hensley

R.C. Hensley 9-18-04



23-FEB-2004 13:58
TLShel AT 1023304