

10/26/98

**METRIC**

PROJECT REFERENCE NO. R-513 BB SHEET NO. 56

ROADWAY DESIGN ENGINEER 06-03-04

HYDRAULICS ENGINEER

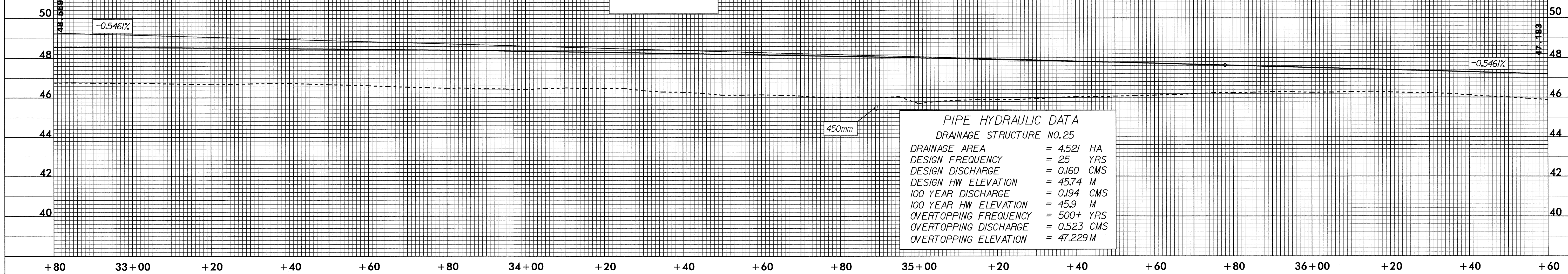
NORTH CAROLINA PROFESSIONAL SEAL 16600

CONST. REV.

R / W REV.

Richard D. Shelton R.C. Honey 8-18-04

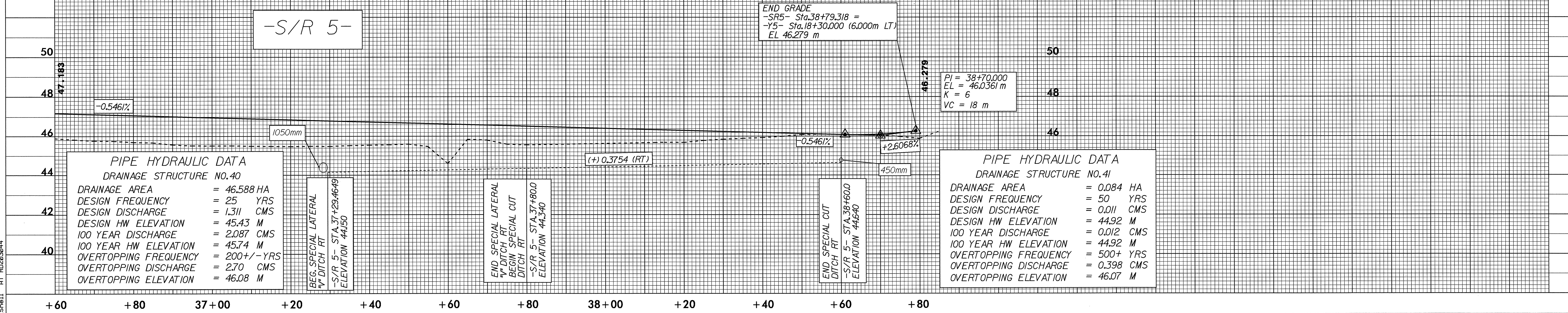
-S/R 5-



**PIPE HYDRAULIC DATA**  
DRAINAGE STRUCTURE NO.25

DRAINAGE AREA	= 4.521 HA
DESIGN FREQUENCY	= 25 YRS
DESIGN DISCHARGE	= 0.160 CMS
DESIGN HW ELEVATION	= 45.74 M
100 YEAR DISCHARGE	= 0.194 CMS
100 YEAR HW ELEVATION	= 45.9 M
OVERTOPPING FREQUENCY	= 500+ YRS
OVERTOPPING DISCHARGE	= 0.523 CMS
OVERTOPPING ELEVATION	= 47.229 M

-S/R 5-



**PIPE HYDRAULIC DATA**  
DRAINAGE STRUCTURE NO.40

DRAINAGE AREA	= 46.588 HA
DESIGN FREQUENCY	= 25 YRS
DESIGN DISCHARGE	= 1.311 CMS
DESIGN HW ELEVATION	= 45.43 M
100 YEAR DISCHARGE	= 2.087 CMS
100 YEAR HW ELEVATION	= 45.74 M
OVERTOPPING FREQUENCY	= 200+/- YRS
OVERTOPPING DISCHARGE	= 2.70 CMS
OVERTOPPING ELEVATION	= 46.08 M

BEG. SPECIAL LATERAL  
1/2" DITCH RT  
S/R 5 - STA. 37+29.4649  
ELEVATION 44.50

END SPECIAL LATERAL  
1/2" DITCH RT  
BEG. SPECIAL CUT  
DITCH RT  
S/R 5 - STA. 37+80.0  
ELEVATION 44.340

END SPECIAL CUT  
DITCH RT  
S/R 5 - STA. 38+60.0  
ELEVATION 44.640

**PIPE HYDRAULIC DATA**  
DRAINAGE STRUCTURE NO.41

DRAINAGE AREA	= 0.084 HA
DESIGN FREQUENCY	= 50 YRS
DESIGN DISCHARGE	= 0.011 CMS
DESIGN HW ELEVATION	= 44.92 M
100 YEAR DISCHARGE	= 0.012 CMS
100 YEAR HW ELEVATION	= 44.92 M
OVERTOPPING FREQUENCY	= 500+ YRS
OVERTOPPING DISCHARGE	= 0.398 CMS
OVERTOPPING ELEVATION	= 46.07 M

23-FEB-2004 14:05  
TL\_Snel1 AT R:\2003\A\513bb.rpt