

-LDET3- DETOUR DETAIL

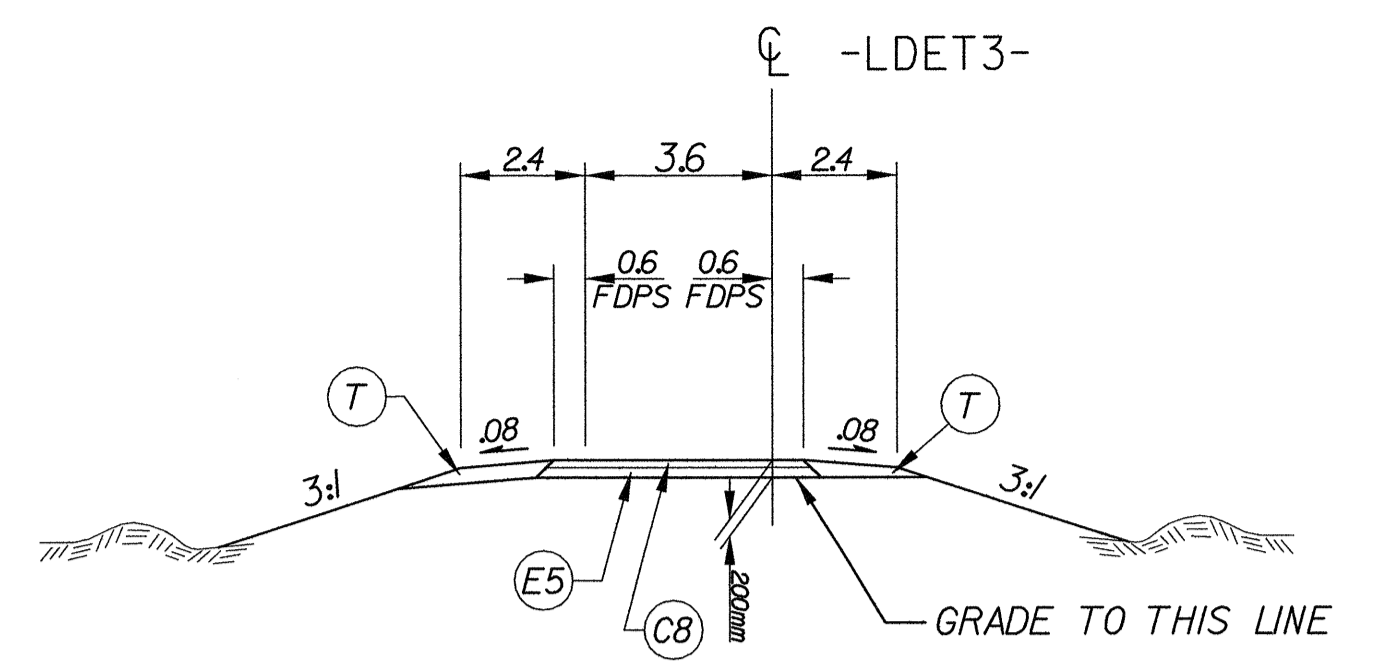
METRIC

PROJECT REFERENCE NO. R-513C SHEET NO. 2-P
 R/W SHEET NO.

ROADWAY DESIGN ENGINEER: [Signature]
 HYDRAULICS ENGINEER: [Signature]

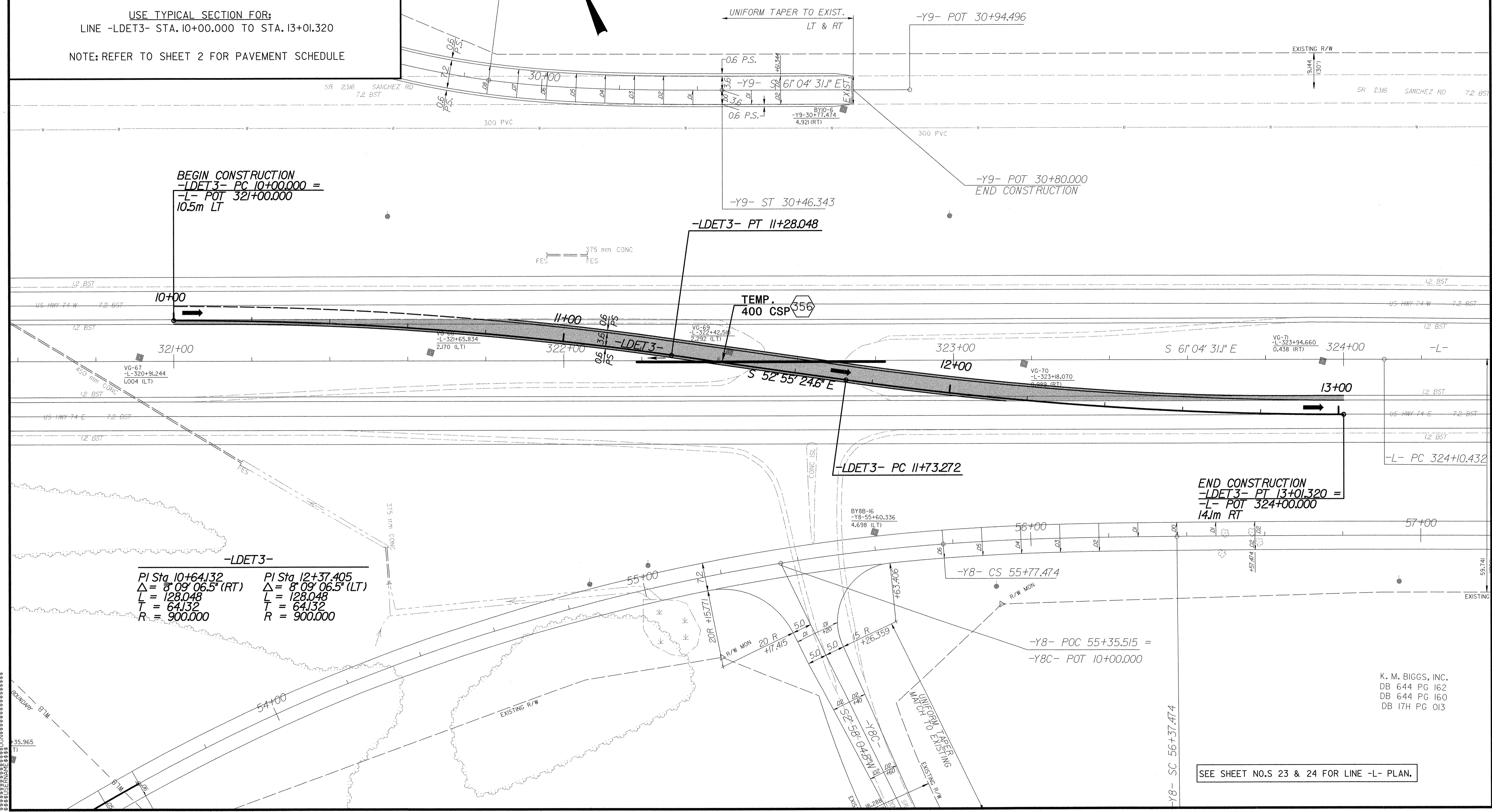
CONST. REV.
 R/W REV.

TGS ENGINEERS
 975 WALNUT STREET, SUITE 141
 CARY, NC 27511
 PH (919) 319-6850



NOTE: NO PROPOSED GRADE LINE HAS BEEN SET FOR THIS ALIGNMENT. PAVEMENT SHOULD BE UP TO BUT NOT INCLUDING FINAL LAYER OF SURFACE COURSE. SEE TCP-123

K. M. BIGGS, INC.
 DB 644 PG 162
 DB 644 PG 160
 DB 17H PG 013



-LDET3-

PI Sta. 10+64.132	PI Sta. 12+37.405
$\Delta = 8^{\circ} 09' 06.5''$ (RT)	$\Delta = 8^{\circ} 09' 06.5''$ (LT)
L = 128.048	L = 128.048
T = 64.132	T = 64.132
R = 900.000	R = 900.000

SEE SHEET NO.S 23 & 24 FOR LINE -L- PLAN.

K. M. BIGGS, INC.
 DB 644 PG 162
 DB 644 PG 160
 DB 17H PG 013