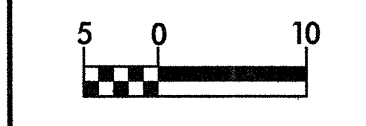
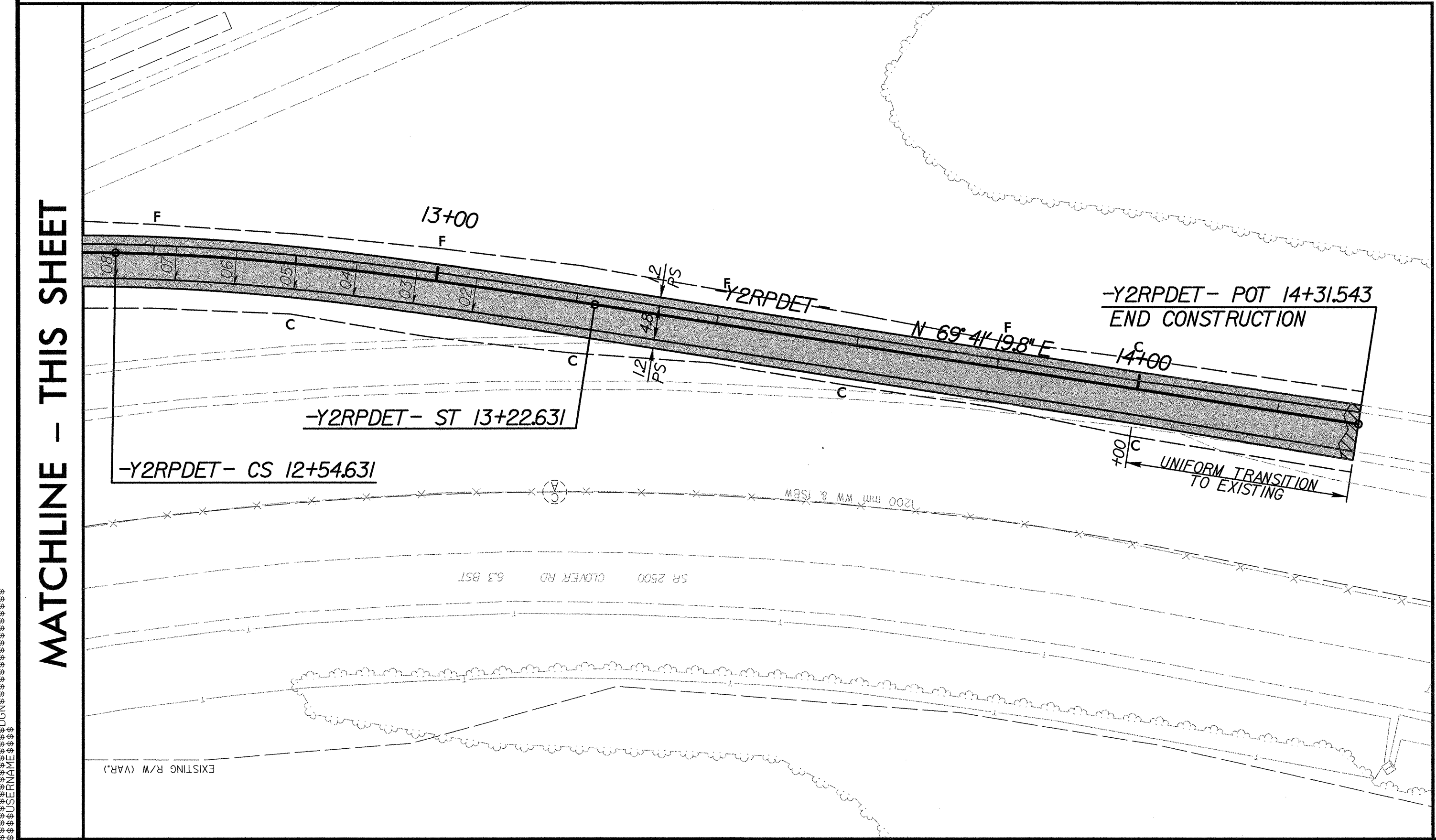
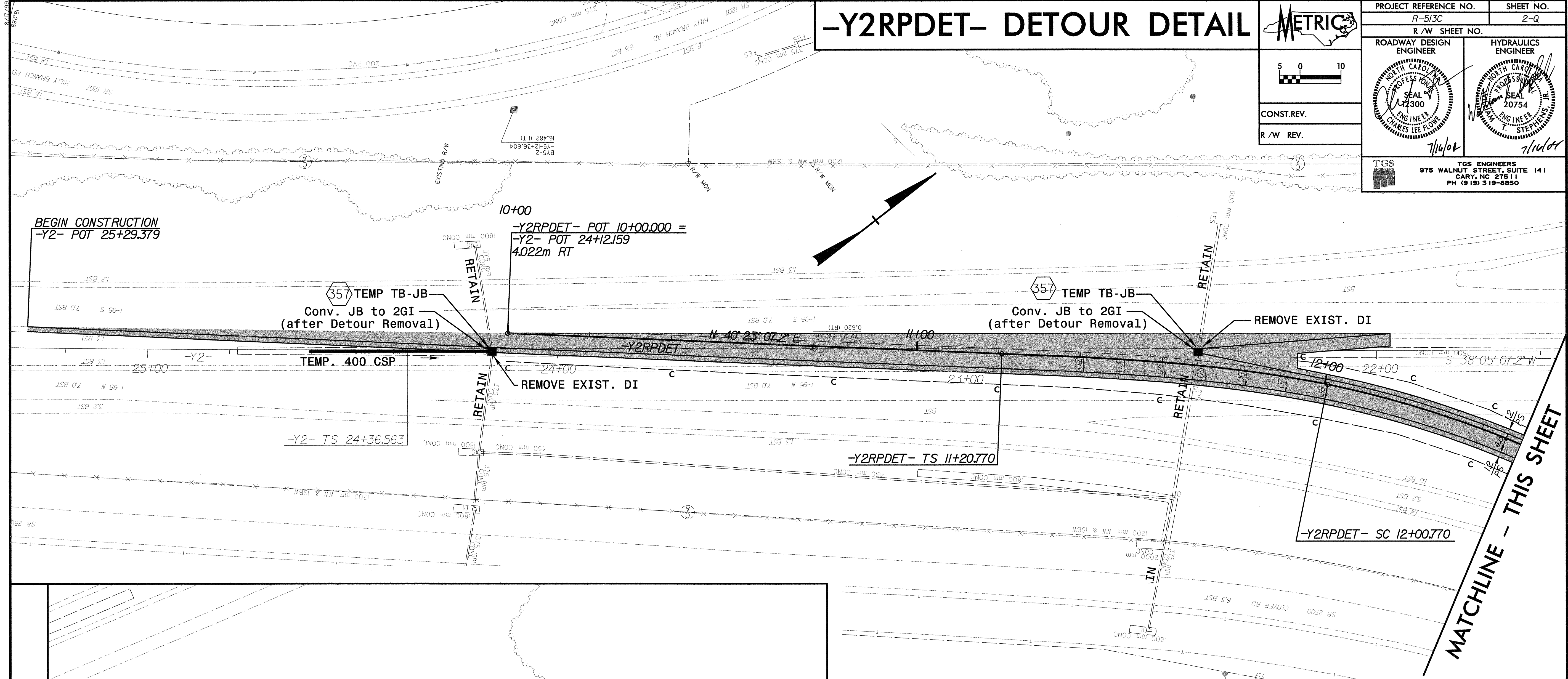


-Y2RPDET- DETOUR DETAIL



CONST. REV.
R/W REV.

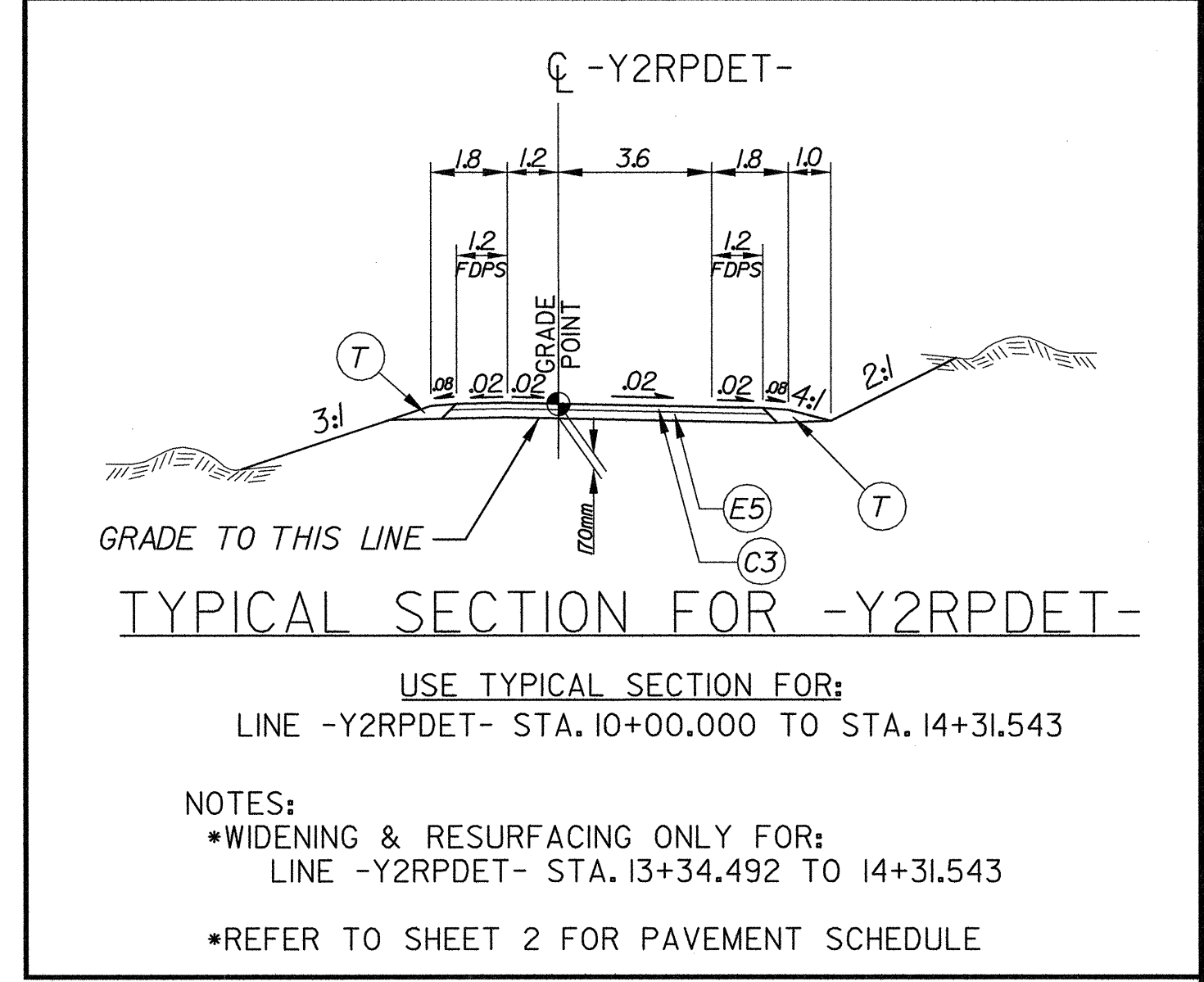
PROJECT REFERENCE NO. R-513C	SHEET NO. 2-Q
R/W SHEET NO.	
ROADWAY DESIGN ENGINEER CHARLES LEE FLOWING SEAL 17300 7/16/04	HYDRAULICS ENGINEER STEPHEN S. JONES SEAL 20754 7/16/04
TGS ENGINEERS 975 WALNUT STREET, SUITE 141 CARY, NC 27511 PH (919) 319-8850	



-Y2RPDET-
 PIs Sta. 11+74.175
 $\Delta_s = 9^\circ 10' 02.4"$
 $L_s = 80.000$
 $LT = 53.405$
 $ST = 26.732$

-Y2RPDET-
 PI Sta. 12+27.805
 $\Delta = 12^\circ 20' 38.3" (RT)$
 $L = 53.861$
 $T = 27.035$
 $R = 250.000$

-Y2RPDET-
 PIs Sta. 12+77.337
 $\Delta_s = 7^\circ 41' 32.0"$
 $L_s = 68.000$
 $LT = 45.377$
 $ST = 22.707$



SEE SHEET NO. 136 FOR LINE -Y2RPDET- GRADE AND PROFILE.
 SEE SHEET NO. 37 FOR LINE -Y2- PLAN.

11/14/2004 08:20:26 AM
 07/14/2004 08:20:26 AM