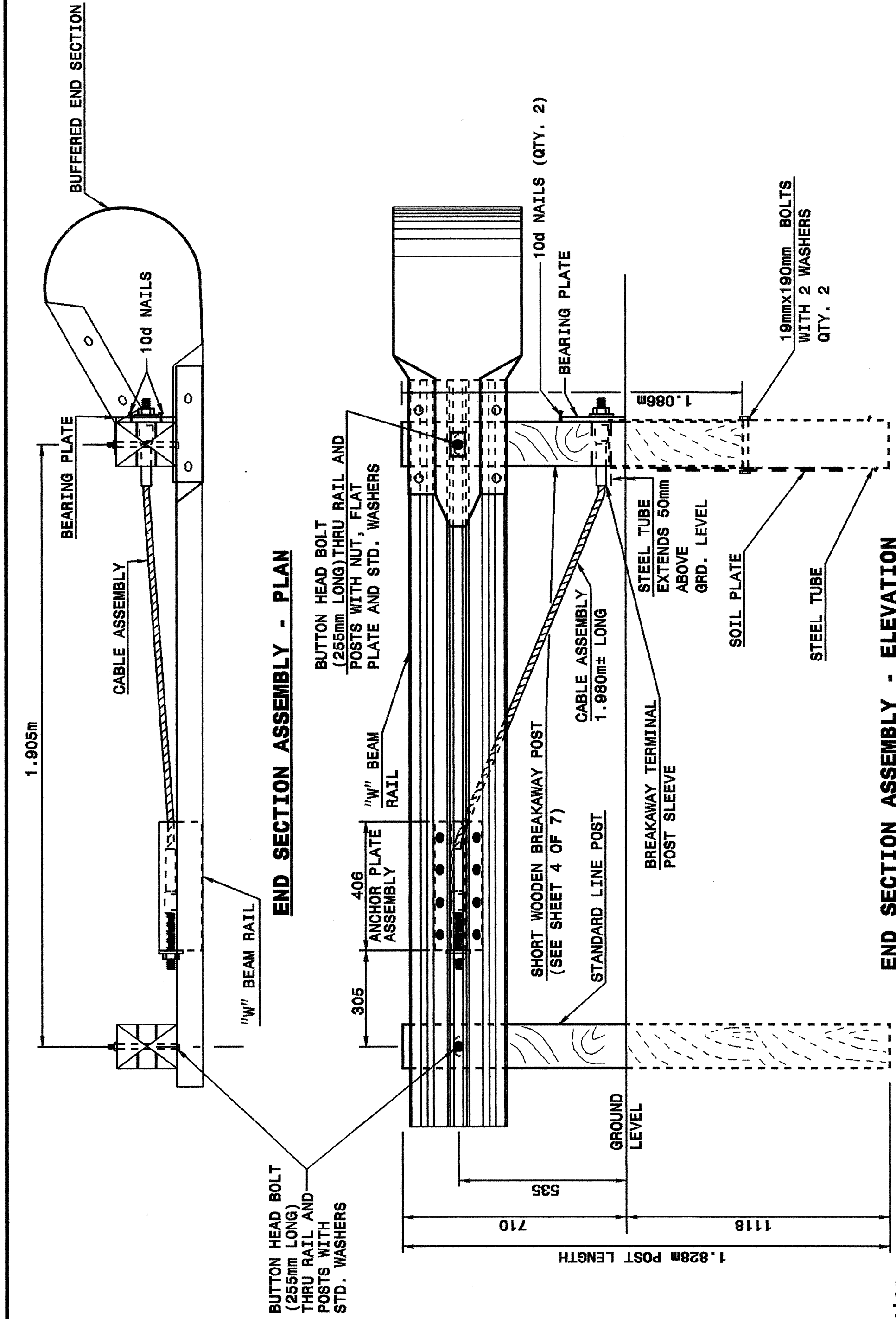


22-MAY-2003 03:50
 W:\Special_Details\stds\02\Stds to Special_Details\metric\86202\086202.dgn
 E:\ward\stds\02\stds to Special_Details\metric\86202\086202.dgn
 01/02/2000

STATE OF
 NORTH CAROLINA
 DEPT. OF TRANSPORTATION
 DIVISION OF HIGHWAYS
 RALEIGH, N.C.

METRIC DETAIL DRAWING FOR
 GUARDRAIL INSTALLATION

SHEET 1 OF 7
862D02



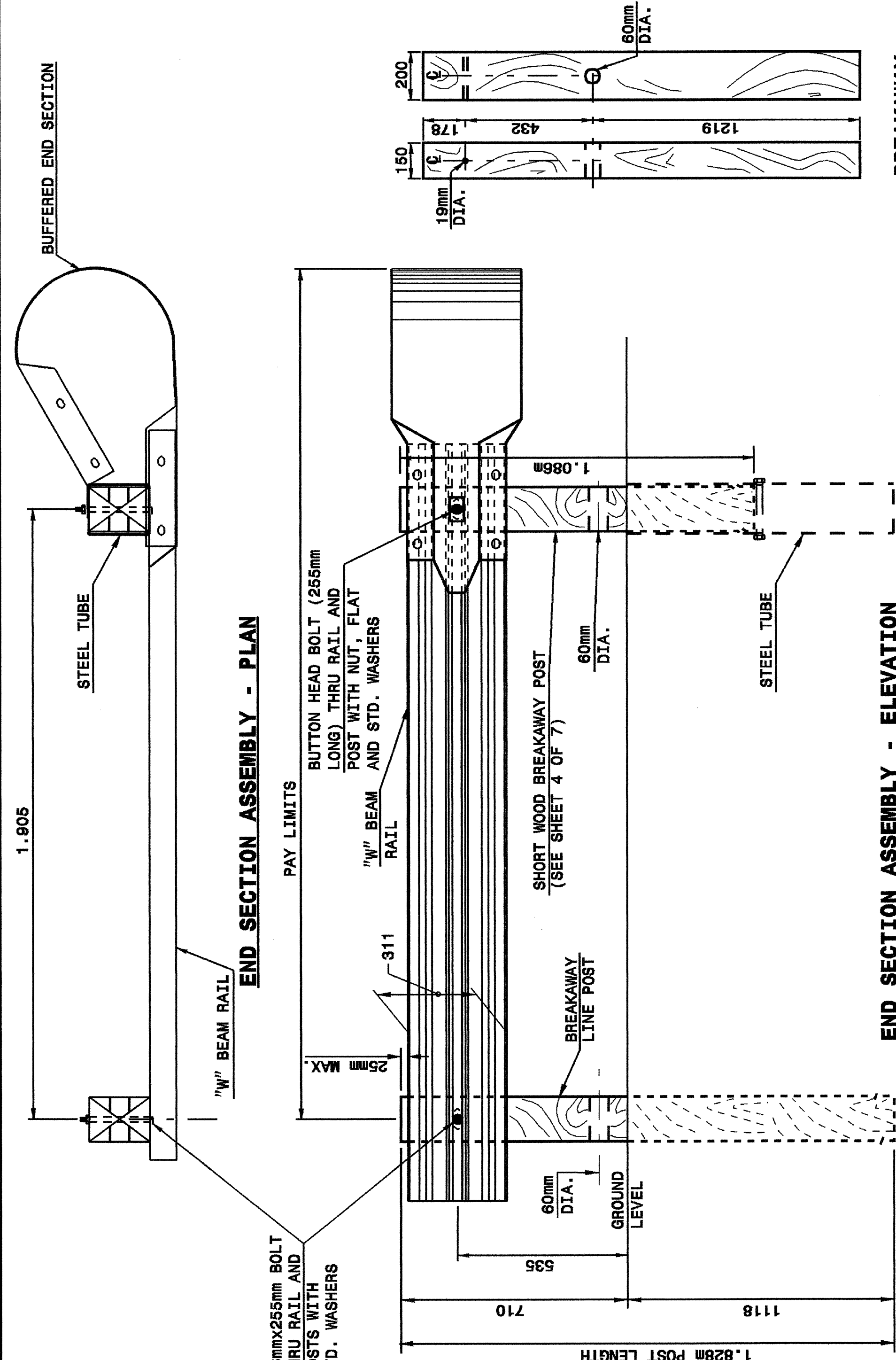
Note:
 This drawing is dimensioned in
 millimeters unless otherwise
 depicted within the drawing.

C.A.T.-1 SYSTEM

STATE OF
 NORTH CAROLINA
 DEPT. OF TRANSPORTATION
 DIVISION OF HIGHWAYS
 RALEIGH, N.C.

METRIC DETAIL DRAWING FOR
 GUARDRAIL INSTALLATION

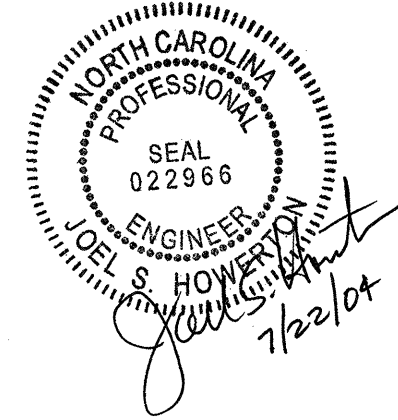
SHEET 2 OF 7
862D02



Note:
 This drawing is dimensioned in
 millimeters unless otherwise
 depicted within the drawing.

A.T.-1 SYSTEM

PROJECT REFERENCE NO. R-0513C
 SHEET NO. 2-HH



DESIGN SERVICES UNIT
 STANDARDS AND SPECIAL DESIGN
 Office 919-250-4128 FAX 919-250-4119

SEE PLATE FOR TITLE

ORIGINAL BY: 2002 STD.862.02 DATE:
 MODIFIED BY: E.E. WARD DATE: 02-09-03
 CHECKED BY: DATE:
 FILE SPEC.: /usr/stds/02todetail/metric/86202/86202.dgn