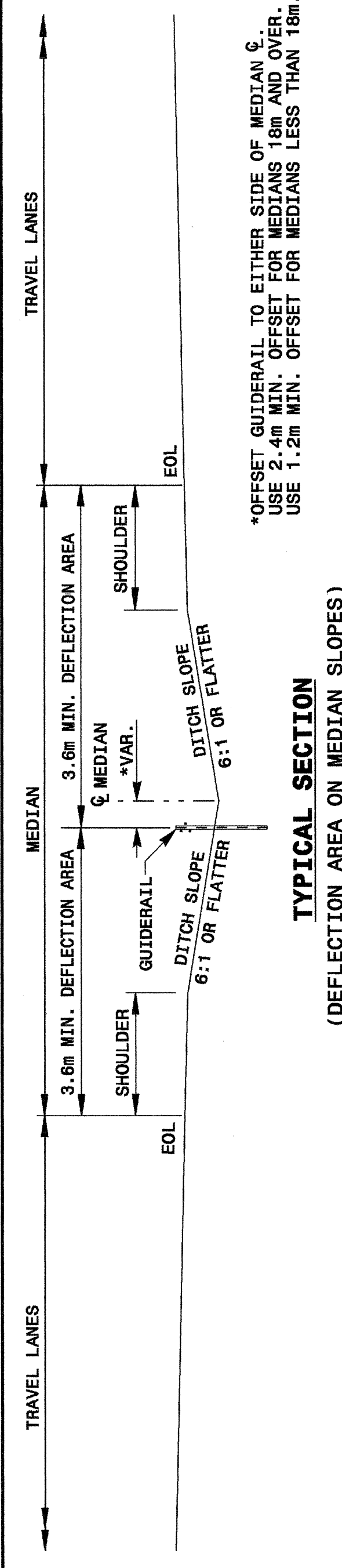


14-APR-2004 10:43
 M:\Special\02stds\02stds to Special Details\metric\865D01\0865d01m.dgn
 6/10/03

STATE OF
 NORTH CAROLINA
 DEPT. OF TRANSPORTATION
 DIVISION OF HIGHWAYS
 RALEIGH, N.C.



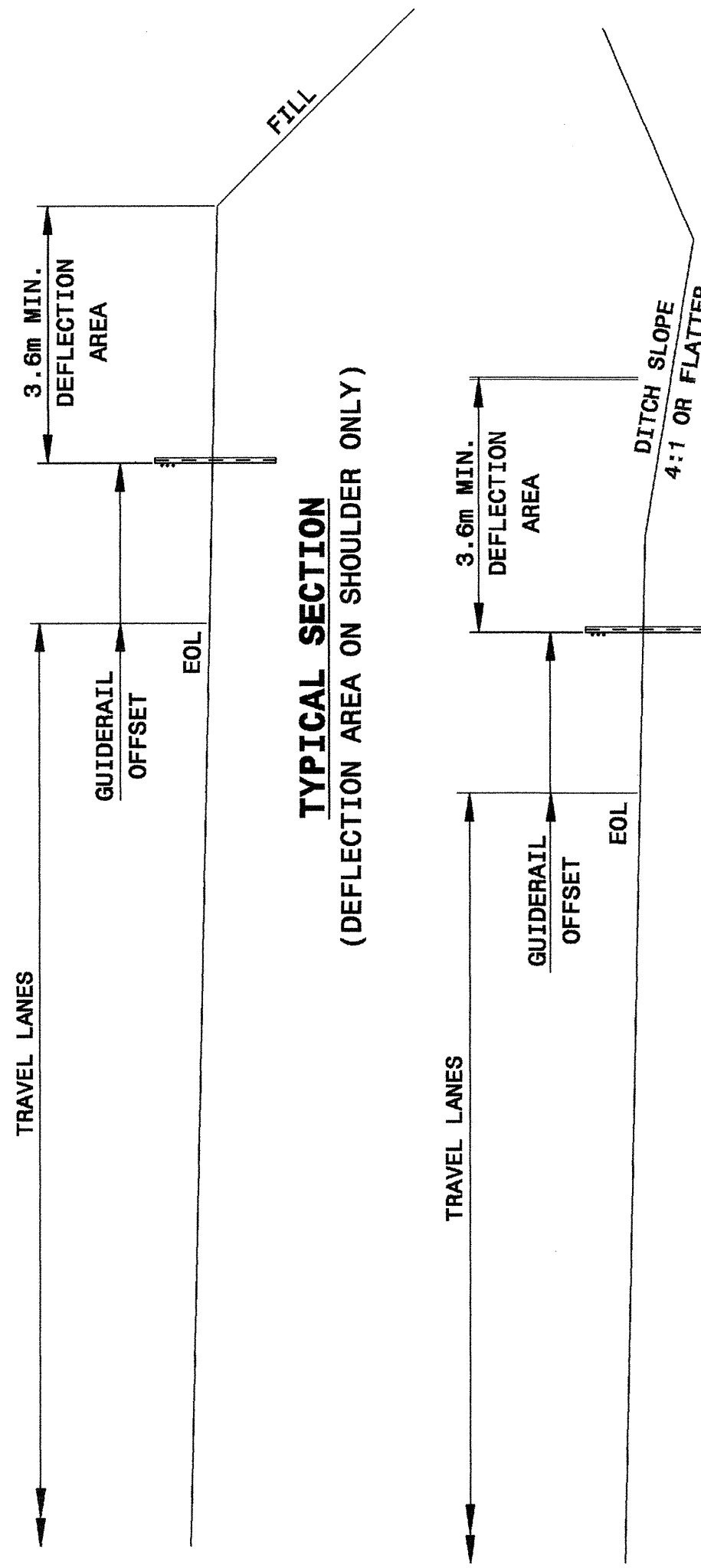
STATE OF
 NORTH CAROLINA
 DEPT. OF TRANSPORTATION
 DIVISION OF HIGHWAYS
 RALEIGH, N.C.

*OFFSET GUIDERAIL TO EITHER SIDE OF MEDIAN C.
 USE 2.4m MIN. OFFSET FOR MEDIANS 18m AND OVER.
 USE 1.2m MIN. OFFSET FOR MEDIANS LESS THAN 18m.

TYPICAL SECTION
 (DEFLECTION AREA ON MEDIAN SLOPES)

DOUBLE FACE GUIDERAIL APPLICATION
 (DEFLECTION AREA ON MEDIAN SLOPES)

METRIC DETAIL DRAWING FOR
CABLE GUIDERAIL
 DESIGN AND PLACEMENT



METRIC DETAIL DRAWING FOR
CABLE GUIDERAIL
 DESIGN AND PLACEMENT

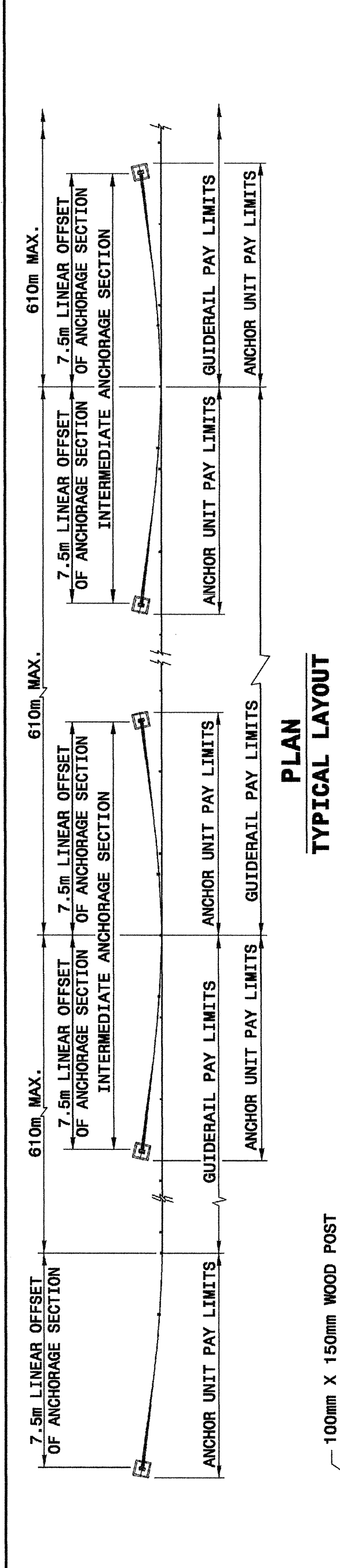
TYPICAL SECTION
 (DEFLECTION AREA ON SHOULDER AND DITCH SLOPE)

SINGLE FACE GUIDERAIL APPLICATION
 (DEFLECTION AREA ON SHOULDER AND DITCH SLOPE)

Note:
 This drawing is dimensioned in
 millimeters unless otherwise
 depicted within the drawing.

SHEET 3 OF 11
865D01

STATE OF
 NORTH CAROLINA
 DEPT. OF TRANSPORTATION
 DIVISION OF HIGHWAYS
 RALEIGH, N.C.

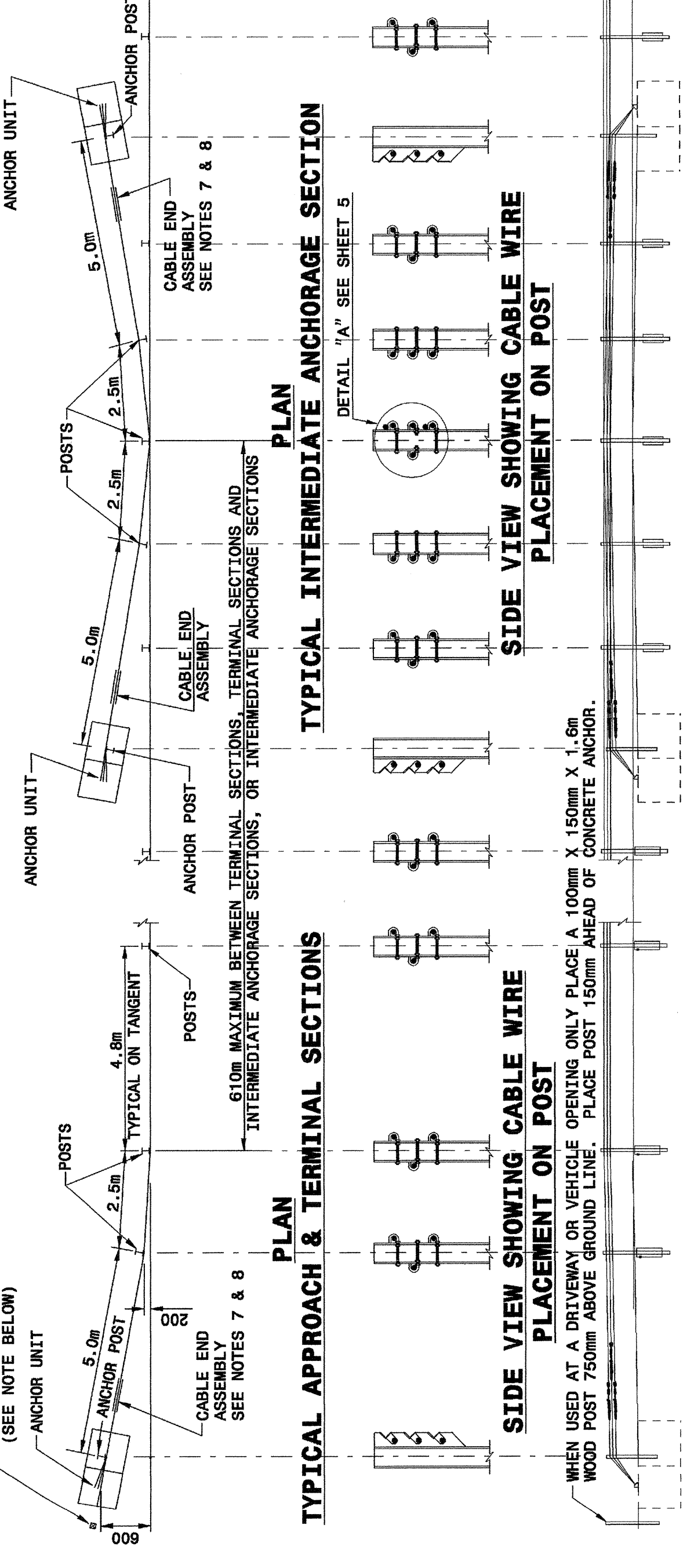


STATE OF
 NORTH CAROLINA
 DEPT. OF TRANSPORTATION
 DIVISION OF HIGHWAYS
 RALEIGH, N.C.

PLAN
 TYPICAL APPROACH & TERMINAL SECTIONS

PLAN
 TYPICAL LAYOUT

METRIC DETAIL DRAWING FOR
CABLE GUIDERAIL
 GUIDERAIL LAYOUT



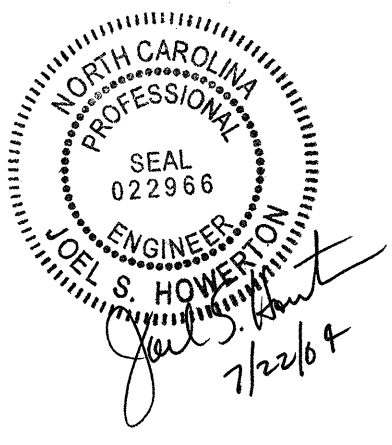
METRIC DETAIL DRAWING FOR
CABLE GUIDERAIL
 GUIDERAIL LAYOUT

*PROVIDE OPENINGS ONLY FOR AREAS AS DESIGNATED ON ROADWAY PLAN SHEETS.

Note:
 This drawing is dimensioned in
 millimeters unless otherwise
 depicted within the drawing.

SHEET 4 OF 11
865D01

PROJECT REFERENCE NO. R-0513C SHEET NO. 2-00



DESIGN SERVICES UNIT
 STANDARDS AND SPECIAL DESIGN
 Office 919-250-4128 FAX 919-250-4119

SEE PLATE FOR TITLE

ORIGINAL BY: 2002 STANDARDS DATE: 1-15-02
 MODIFIED BY: E.E. WARD DATE: 4-07-04
 CHECKED BY: DATE:
 FILE SPEC.: /usr/sto/02stds to details/metric/865D01/0865d01.dgn