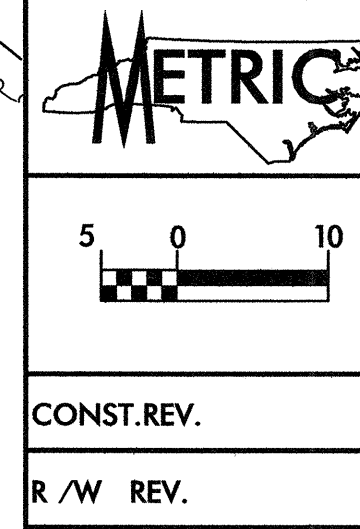


REVISIONS

| -L-                        |                               |                            |
|----------------------------|-------------------------------|----------------------------|
| Pls Sta 247+02.637         | PI Sta 250+24.853             | Pls Sta 253+40.675         |
| $\theta s = 2' 23' 14.4''$ | $\Delta = 2' 11' 17.5''$ (RT) | $\theta s = 2' 23' 14.4''$ |
| $Ls = 125.000$             | $L = 554.705$                 | $Ls = 125.000$             |
| $LT = 83.341$              | $T = 280.557$                 | $LT = 83.341$              |
| $ST = 41.674$              | $R = 1,500.000$               | $ST = 41.674$              |
|                            | $SE = 4\%$                    |                            |



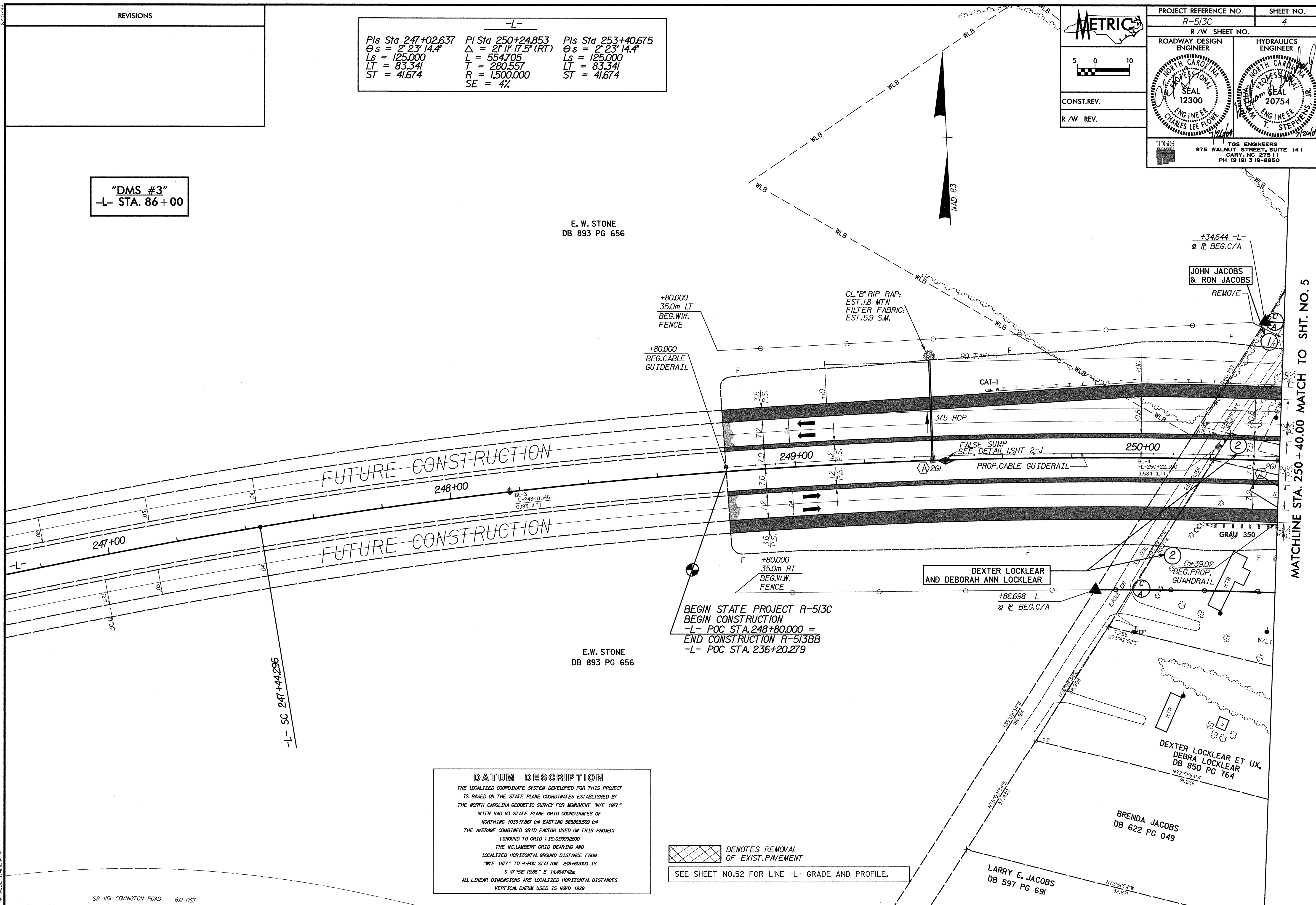
|  |  |
|--|--|
| PROJECT REFERENCE NO.<br>R-513C  | SHEET NO.<br>4                                   |
| R/W SHEET NO.  |  |
| ROADWAY DESIGN ENGINEER<br>SEAL 12300<br>CHARLES LEE FLOWE                           | HYDRAULICS ENGINEER<br>SEAL 20754<br>T. STEPHENS |
| TGS ENGINEERS<br>975 WALNUT STREET, SUITE 141<br>CARY, NC 27511<br>PH (919) 319-8850 |  |

"DMS #3"  
-L- STA. 86+00

E. W. STONE  
DB 893 PG 656

E.W. STONE  
DB 893 PG 656

MATCHLINE STA. 250+40.00 MATCH TO SHT. NO. 5



**DATUM DESCRIPTION**  
 THE LOCALIZED COORDINATE SYSTEM DEVELOPED FOR THIS PROJECT IS BASED ON THE STATE PLANE COORDINATES ESTABLISHED BY THE NORTH CAROLINA GEODETIC SURVEY FOR MONUMENT "WYE 1971" WITH NAD 83 STATE PLANE GRID COORDINATES OF NORTHING 103917.867 (m) EASTING 585865.569 (m) THE AVERAGE COMBINED GRID FACTOR USED ON THIS PROJECT (GROUND TO GRID) IS 0.99992600  
 THE NAD 83 STATE PLANE GRID BEARING AND LOCALIZED HORIZONTAL GROUND DISTANCE FROM "WYE 1971" TO L-POC STATION 248+80.000 IS  
 $S 47^{\circ} 52' 19.85'' E 14,464.742m$   
 ALL LINEAR DIMENSIONS ARE LOCALIZED HORIZONTAL DISTANCES  
 VERTICAL DATUM USED IS NAVD 1929

DENOTES REMOVAL OF EXIST. PAVEMENT

SEE SHEET NO.52 FOR LINE -L- GRADE AND PROFILE.