

REVISIONS

-L-

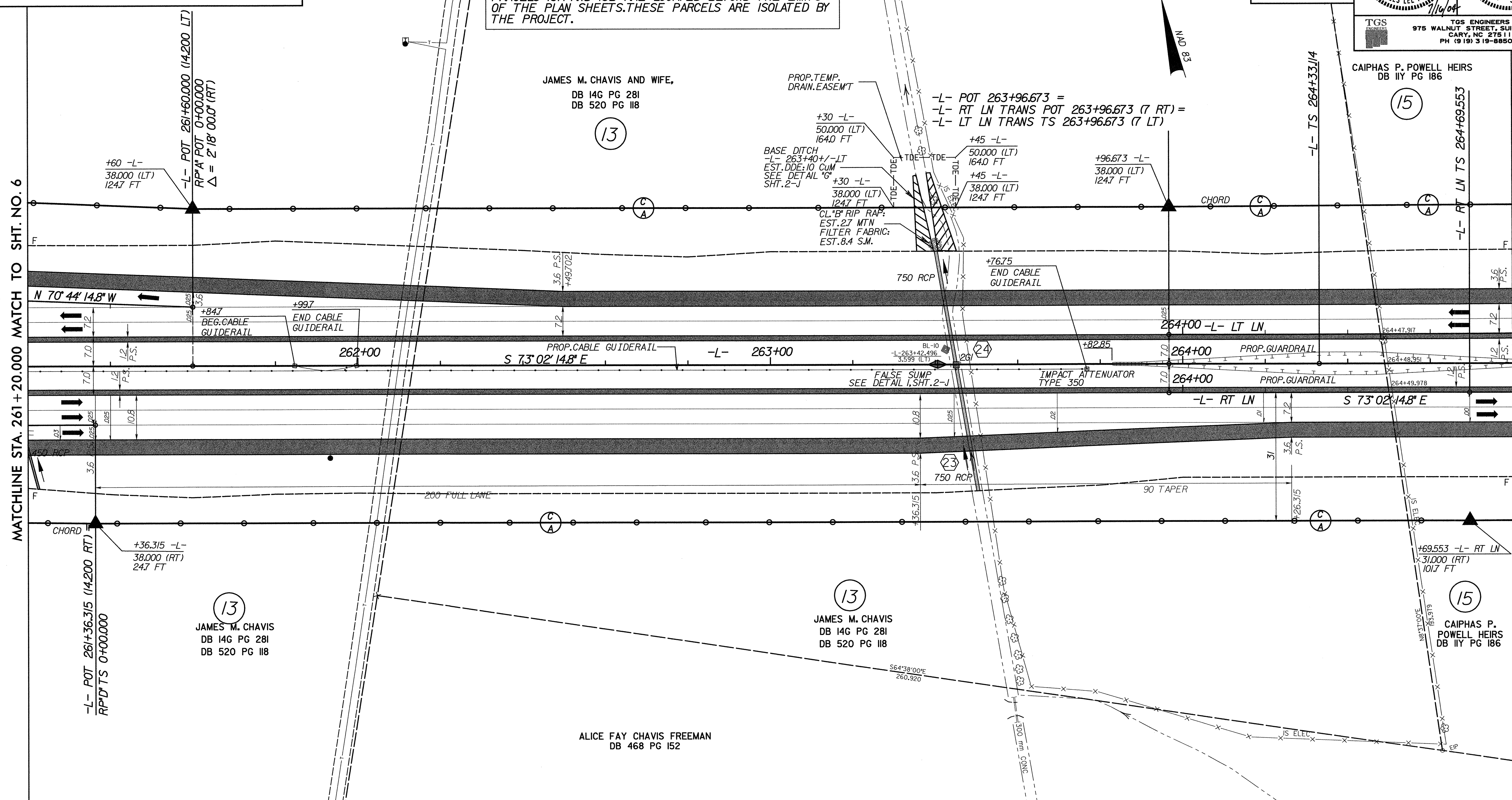
Pls Sta 265+16.448 θs = 0° 59' 41.0" Ls = 125.000 LT = 83.335 ST = 41.668	Pls Sta 266+70.438 Δ = 3° 34' 27.3" (LT) L = 224.576 T = 112.325 R = 3,600.000 SE = 2.5%	Pls Sta 268+24.358 θs = 0° 59' 41.0" Ls = 125.000 LT = 83.335 ST = 41.668
---	---	---

-L- LT LN TRANS

Pls Sta 264+80.007 θs = 0° 59' 41.0" Ls = 125.000 LT = 83.335 ST = 41.668	Pls Sta 266+33.998 Δ = 3° 34' 27.3" (LT) L = 224.577 T = 112.325 R = 3,600.000 SE = 2.5%	Pls Sta 267+46.250 θs = 0° 59' 41.0" Ls = 125.000 LT = 83.335 ST = 41.668
---	---	---

PROJECT REFERENCE NO. R-513C	SHEET NO. 7
R/W SHEET NO.	
ROADWAY DESIGN ENGINEER CHARLES LEE FLOWING 7/16/04	HYDRAULICS ENGINEER T. STEPHENS 7/16/04
TGS ENGINEERS 975 WALNUT STREET, SUITE 141 CARY, NC 27511 PH (919) 319-8850	

NOTE FOR PARCELS 13A & 13B:
PARCELS 13A AND 13B ARE LOCATED BEYOND THE LIMITS OF THE PLAN SHEETS. THESE PARCELS ARE ISOLATED BY THE PROJECT.



-L- RT LN TRANS

Pls Sta 265+52.888 θs = 0° 59' 41.0" Ls = 125.000 LT = 83.335 ST = 41.668	Pls Sta 267+06.878 Δ = 3° 34' 27.3" (LT) L = 224.577 T = 112.325 R = 3,600.000 SE = 2.5%	Pls Sta 268+60.798 θs = 0° 59' 41.0" Ls = 125.000 LT = 83.335 ST = 41.668
---	---	---

SEE SHEET NO. 54 FOR LINE -L- GRADE AND PROFILE.
SEE SHEET NO. 54 FOR LINE -L- RT. LN TRANS GRADE AND PROFILE.
SEE SHEET NO. 54 FOR LINE -L- LT LN TRANS GRADE AND PROFILE.
SEE SHEET NO. 73 FOR RAMP A GRADE AND PROFILE.
SEE SHEET NO. 76 FOR RAMP D GRADE AND PROFILE.

MATCHLINE STA. 261+20.000 MATCH TO SHT. NO. 6

MATCHLINE STA. 264+80.000 MATCH TO SHT. NO. 8