

REVISIONS

-L-

Pls Sta 265+16.448 θs = 0° 59' 41.0" Ls = 125.000 LT = 83.335 ST = 41.668	Pls Sta 266+70.438 Δ = 3° 34' 27.3" (LT) L = 224.576 T = 112.325 R = 3,600.000 SE = 2.5%	Pls Sta 268+24.358 θs = 0° 59' 41.0" Ls = 125.000 LT = 83.335 ST = 41.668
---	---	---

-Y5-

Pls Sta 20+71.318 θs = 6° 36' 39.8" Ls = 60.000 LT = 40.028 ST = 20.025	Pls Sta 21+61.863 Δ = 30° 22' 20.9" (LT) L = 137.826 T = 70.573 R = 260.000 SE = 8%	Pls Sta 22+49.141 θs = 6° 36' 39.8" Ls = 60.000 LT = 40.028 ST = 20.025
---	--	---

RAMP "B"

Pls Sta 0+60.052 θs = 7° 21' 59.8" Ls = 90.000 LT = 60.052 ST = 30.047	Pls Sta 1+93.841 Δ = 33° 03' 00.2" (LT) L = 201.891 T = 103.841 R = 350.000 SE = 7%	Pls Sta 3+11.905 θs = 4° 54' 39.8" Ls = 60.000 LT = 40.015 ST = 20.014
--	--	--

RAMP "C"

Pls Sta 1+40.083 θs = 10° 58' 17.5" Ls = 90.000 LT = 60.116 ST = 30.105	Pls Sta 5+28.473 Δ = 11° 30' 37.1" (RT) L = 465.565 T = 358.505 R = 235.000 SE = 8%	Pls Sta 6+67.683 θs = 11° 45' 51.3" Ls = 90.000 R1 = 3252.500 R2 = 235.000 LT = 58.120 ST = 32.150
---	--	--

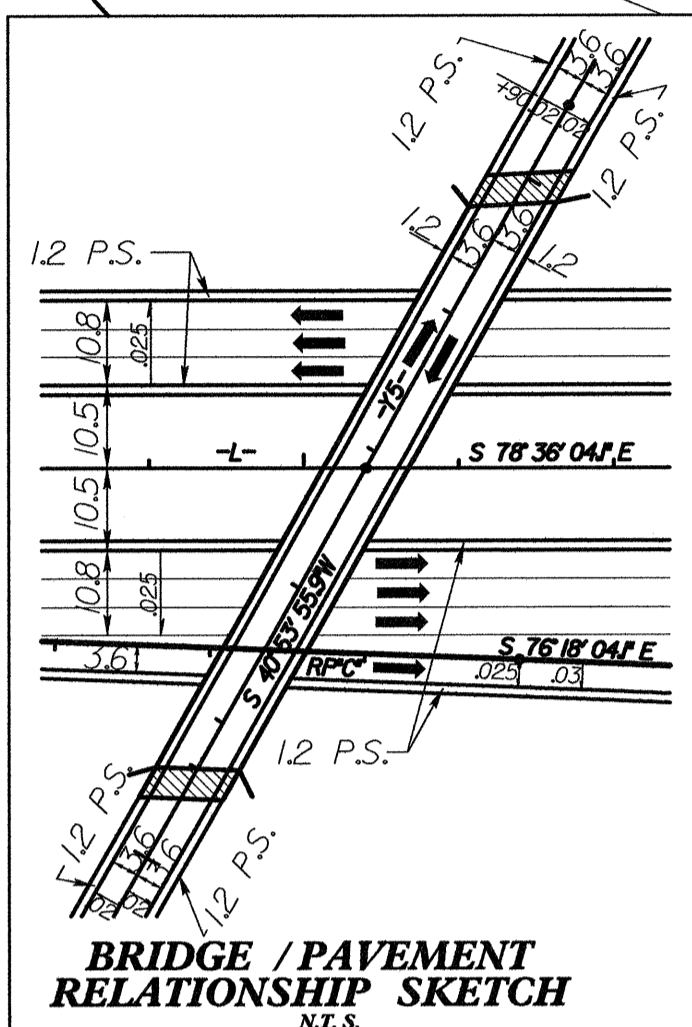
-L- LT LN TRANS

Pls Sta 264+80.007 θs = 0° 59' 41.0" Ls = 125.000 LT = 83.335 ST = 41.668	Pls Sta 266+33.998 Δ = 3° 34' 27.3" (LT) L = 224.577 T = 112.325 R = 3,600.000 SE = 2.5%	Pls Sta 267+46.250 θs = 0° 59' 41.0" Ls = 125.000 LT = 83.335 ST = 41.668
---	---	---

SEE SHEET NO. 55 FOR LINE -L- RT LN TRANS GRADE AND PROFILE.
SEE SHEET NO. 55 FOR LINE -L- LT LN TRANS GRADE AND PROFILE.
SEE SHEET NO. 55 FOR LINE -L- GRADE AND PROFILE.
SEE SHEET NO. 79 FOR RAMP B GRADE AND PROFILE.
SEE SHEET NO. 81 FOR RAMP C GRADE AND PROFILE.
SEE SHEET NO. 120 FOR LINE -Y5- GRADE AND PROFILE.

-L- RT LN TRANS

Pls Sta 265+52.888 θs = 0° 59' 41.0" Ls = 125.000 LT = 83.335 ST = 41.668	Pls Sta 267+06.878 Δ = 3° 34' 27.3" (LT) L = 224.577 T = 112.325 R = 3,600.000 SE = 2.5%	Pls Sta 268+60.798 θs = 0° 59' 41.0" Ls = 125.000 LT = 83.335 ST = 41.668
---	---	---



SEE SHEETS S-97 THROUGH S-129 FOR STRUCTURES PLANS

METRIC

PROJECT REFERENCE NO. R-513C SHEET NO. 9

R/W SHEET NO.

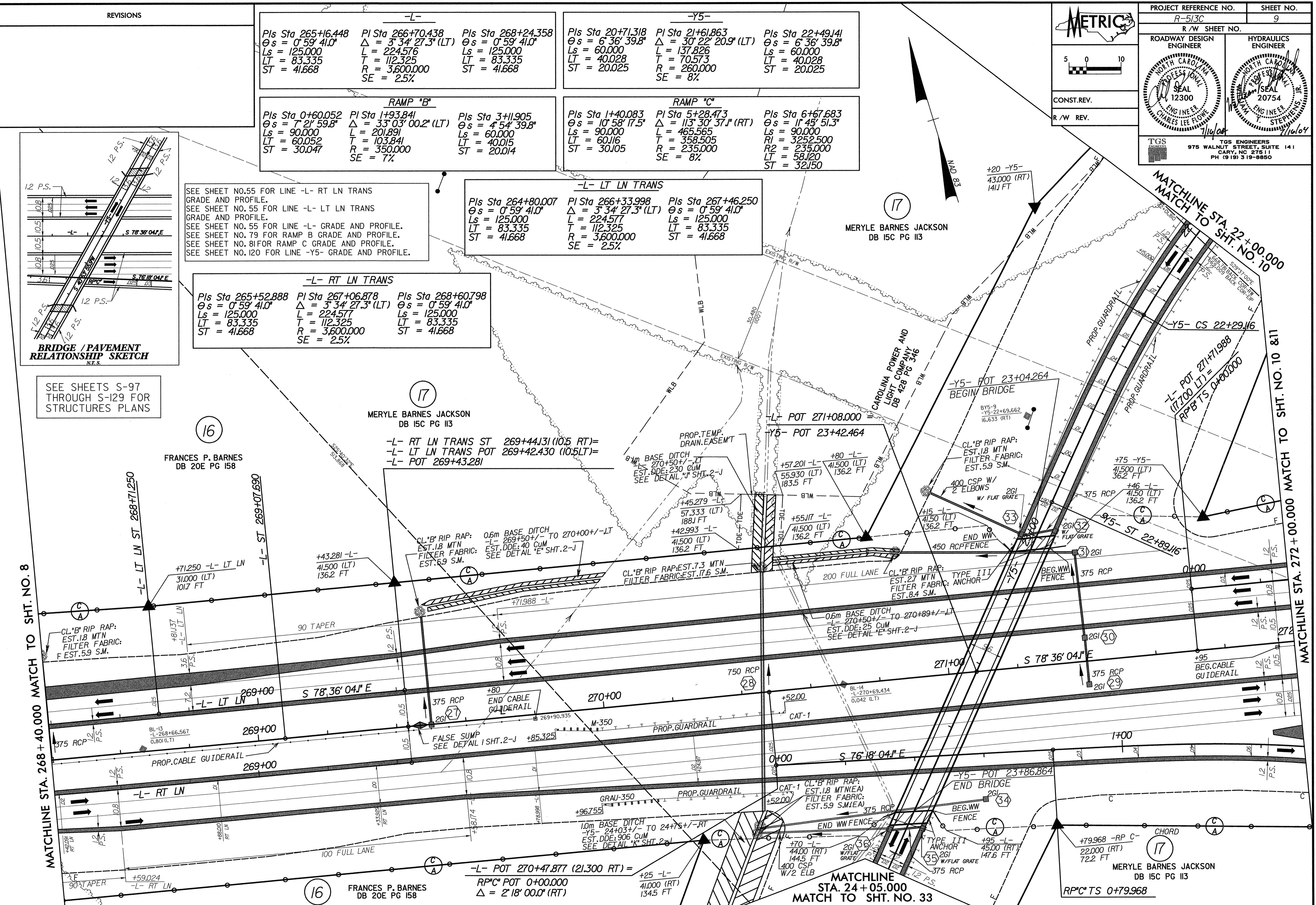
ROADWAY DESIGN ENGINEER

HYDRAULICS ENGINEER

Professional Engineer Seal: NORTH CAROLINA, 12300, ENGINEER, CHARLES LEE FLOWE, 1/16/04

Professional Engineer Seal: NORTH CAROLINA, 20754, ENGINEER, T. STEPHENS, 1/16/04

TGS ENGINEERS
975 WALNUT STREET, SUITE 141
CARY, NC 27511
PH (919) 319-8850



MERYLE BARNES JACKSON
DB 15C PG 113

FRANCES P. BARNES
DB 20E PG 158

FRANCES P. BARNES
DB 20E PG 158

MERYLE BARNES JACKSON
DB 15C PG 113