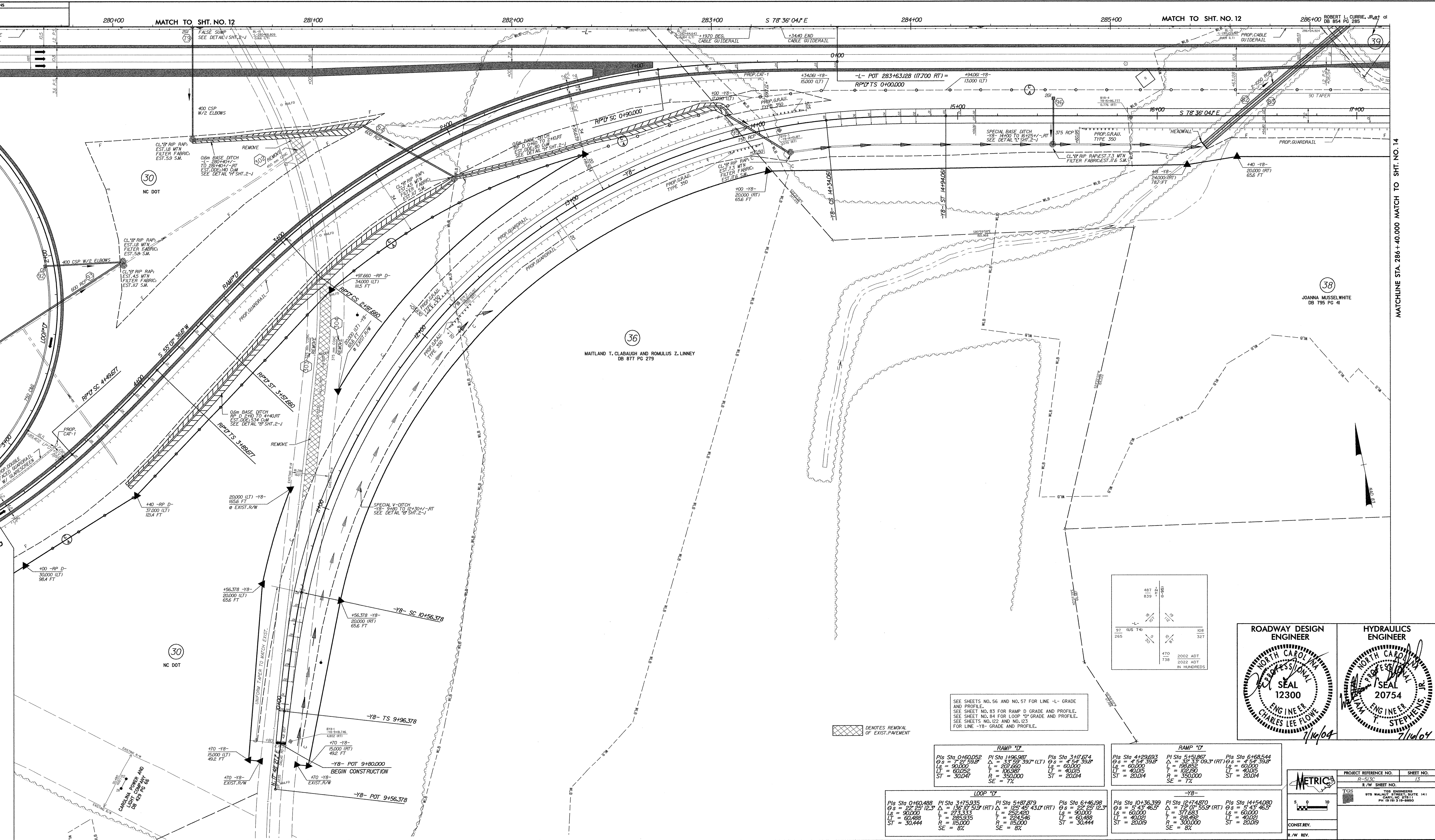


REVISIONS

MATCHLINE STA. 279+20.000 MATCH TO SHT. NO. 11

STA. 280+00.000 RP D

STA. 286+40.000 MATCH TO SHT. NO. 14



SEE SHEETS NO. 56 AND NO. 57 FOR LINE -L- GRADE AND PROFILE.
 SEE SHEET NO. 83 FOR RAMP D GRADE AND PROFILE.
 SEE SHEET NO. 84 FOR LOOP Y GRADE AND PROFILE.
 SEE SHEETS NO. 12 AND NO. 13 FOR LINE -YB- GRADE AND PROFILE.

XXXX DENOTES REMOVAL OF EXIST. PLACEMENT

RAMP "D"		RAMP "Y"		LOOP "Y"		-YB-	
Sta 4+90.000	Sta 4+95.000	Sta 9+80.000	Sta 9+85.000	Sta 10+36.399	Sta 10+41.409	Sta 10+36.399	Sta 10+41.409
PI = 4+92.500	PI = 4+92.500	PI = 9+82.500	PI = 9+82.500	PI = 10+38.900	PI = 10+43.910	PI = 10+38.900	PI = 10+43.910
Δ = 33° 59' 39.7" (LT)	Δ = 33° 59' 39.7" (LT)	Δ = 136° 19' 51.9" (RT)	Δ = 136° 19' 51.9" (RT)	Δ = 136° 19' 51.9" (RT)	Δ = 136° 19' 51.9" (RT)	Δ = 136° 19' 51.9" (RT)	Δ = 136° 19' 51.9" (RT)
Ls = 60.000	Ls = 60.000	Ls = 60.000	Ls = 60.000	Ls = 60.000	Ls = 60.000	Ls = 60.000	Ls = 60.000
T = 100.000	T = 100.000	T = 100.000	T = 100.000	T = 100.000	T = 100.000	T = 100.000	T = 100.000
R = 350.000	R = 350.000	R = 350.000	R = 350.000	R = 350.000	R = 350.000	R = 350.000	R = 350.000
SE = 7%	SE = 7%	SE = 7%	SE = 7%	SE = 7%	SE = 7%	SE = 7%	SE = 7%

<p>ROADWAY DESIGN ENGINEER</p> <p>CHARLES LEE FLOWE</p> <p>SEAL 12300</p> <p>1/16/04</p>	<p>HYDRAULICS ENGINEER</p> <p>JOANNA MUSSELWHITE</p> <p>SEAL 20754</p> <p>7/16/04</p>
--	---

PROJECT REFERENCE NO. 07-5520 SHEET NO. 13

R/W SHEET NO. 13

CONSTRY.

R/W REV.