

REVISIONS

	PROJECT REFERENCE NO.	SHEET NO.
	R-513C	15
R/W SHEET NO.		
ROADWAY DESIGN ENGINEER	HYDRAULICS ENGINEER	
CONST. REV.		
R/W REV.		
TGS ENGINEERS 975 WALNUT STREET, SUITE 141 GARY, NC 27511 PH (919) 319-8850		

**-L-**

Pls Sta 287+56.600 θs = 2° 33' 28.3" Ls = 125.000 LT = 83.342 ST = 41.675	PI Sta 290+71.002 Δ = 22° 02' 53.6" (LT) L = 538.740 T = 272.744 R = 1,400.000 SE = 4%	Pls Sta 293+78.672 θs = 2° 33' 28.3" Ls = 125.000 LT = 83.342 ST = 41.675
---	---	---

**-Y8-**

Pls Sta 18+33.523 θs = 2° 31' 04.2" Ls = 127.000 LT = 84.675 ST = 42.341	PI Sta 21+11.541 Δ = 18° 31' 40.1" (LT) L = 467.271 T = 235.693 R = 1,445.000 SE = 3%	Pls Sta 23+63.120 θs = 1° 11' 22.3" Ls = 60.000 LT = 40.001 ST = 20.001
--	--	---

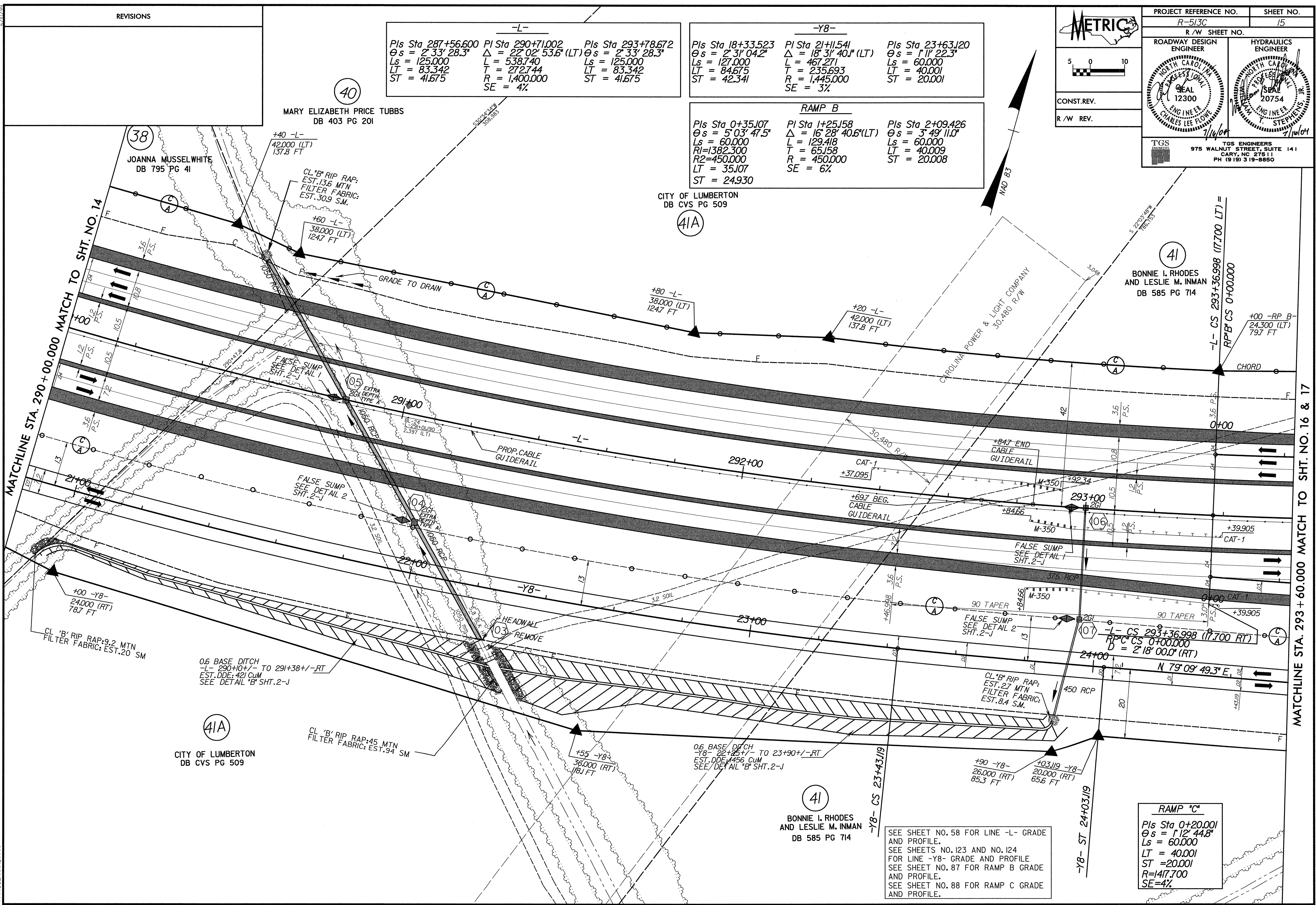
**RAMP B**

Pls Sta 0+35.107 θs = 5° 03' 47.5" Ls = 60.000 R1=1382.300 LT = 35.107 ST = 24.930	PI Sta 1+25.158 Δ = 16° 28' 40.6" (LT) L = 129.418 T = 65.158 R = 450.000 SE = 6%	Pls Sta 2+09.426 θs = 3° 49' 11.0" Ls = 60.000 LT = 40.009 ST = 20.008
---	--	--

**RAMP "C"**

Pls Sta 0+20.001  
θs = 1° 12' 44.8"  
Ls = 60.000  
LT = 40.001  
ST = 20.001  
R=147.700  
SE=4%

SEE SHEET NO. 58 FOR LINE -L- GRADE AND PROFILE.  
SEE SHEETS NO. 123 AND NO. 124 FOR LINE -Y8- GRADE AND PROFILE.  
SEE SHEET NO. 87 FOR RAMP B GRADE AND PROFILE.  
SEE SHEET NO. 88 FOR RAMP C GRADE AND PROFILE.



40  
MARY ELIZABETH PRICE TUBBS  
DB 403 PG 201

41A  
CITY OF LUMBERTON  
DB CVS PG 509

41  
BONNIE I. RHODES  
AND LESLIE M. INMAN  
DB 585 PG 714

41  
BONNIE I. RHODES  
AND LESLIE M. INMAN  
DB 585 PG 714

41A  
CITY OF LUMBERTON  
DB CVS PG 509

1. REVISIONS  
 2. CHECKED BY: [Signature]  
 3. DATE: 07/16/2004  
 4. DRAWN BY: [Signature]