

-L- ST 294+61.998

295+00

N 74°14'05.8" E

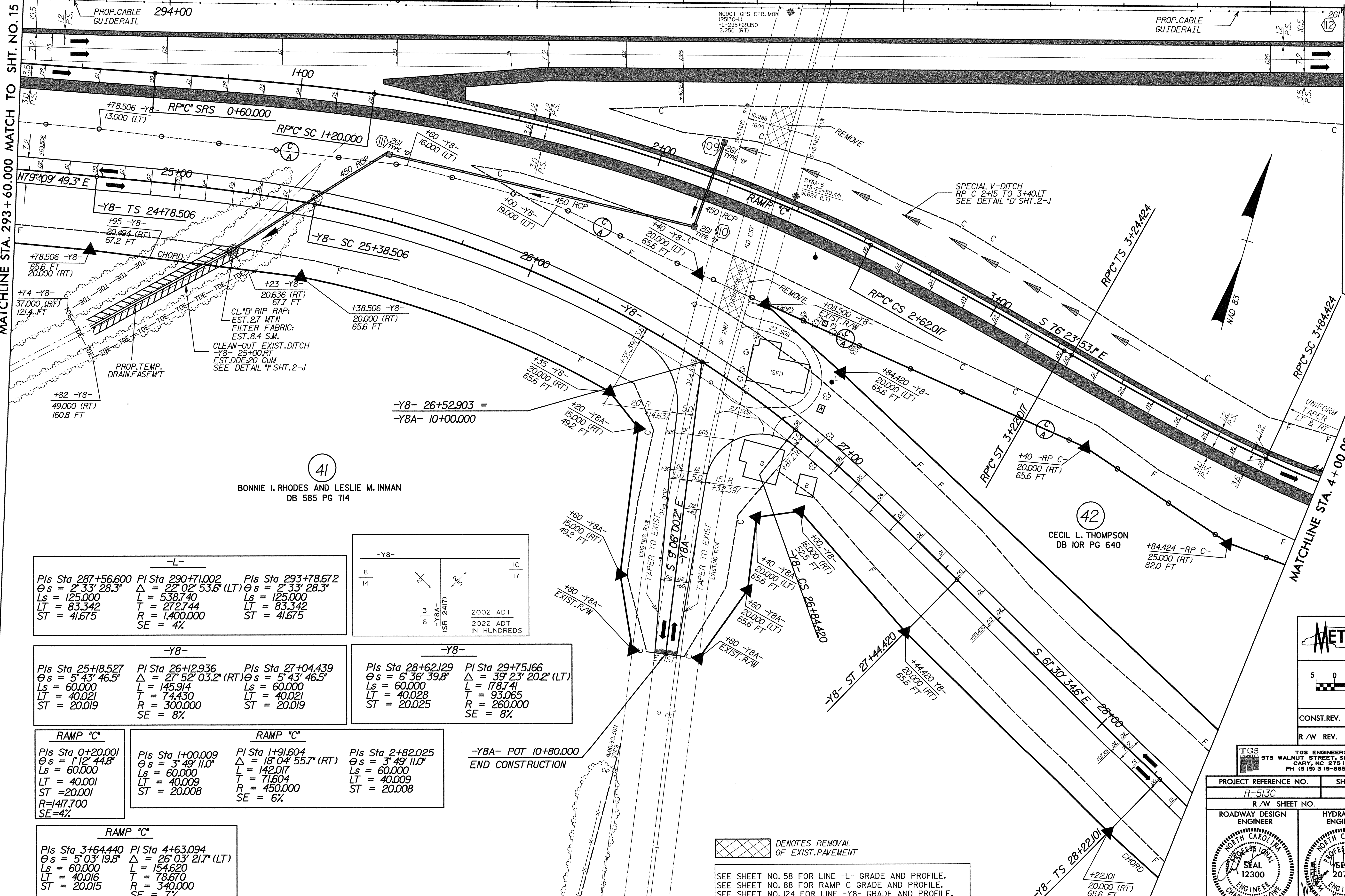
-L- MATCH TO SHT. 16

296+00

297+00

MATCHLINE STA. 293 + 60.000 MATCH TO SHT. NO. 15

MATCHLINE STA. 297 + 20.000 MATCH TO SHT. NO. 19

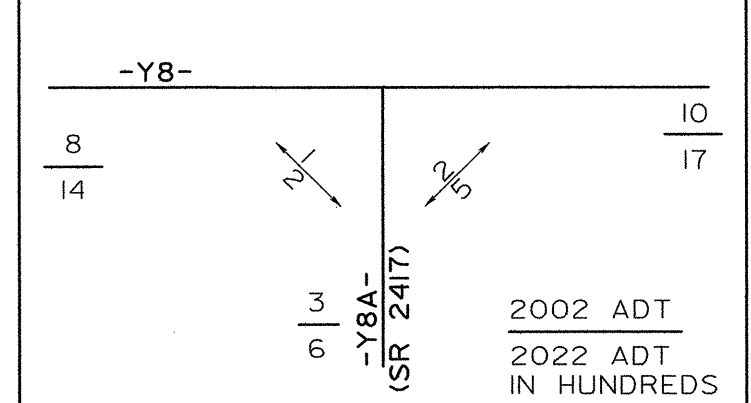


BONNIE I. RHODES AND LESLIE M. INMAN  
DB 585 PG 714

CECIL L. THOMPSON  
DB 10R PG 640

-L-

Pls Sta 287+56.600 θs = 2°33'28.3" Ls = 125.000 LT = 83.342 ST = 41.675	Pls Sta 290+71.002 Δ = 22°02'53.6" (LT) L = 538.740 T = 272.744 R = 1,400.000 SE = 4%	Pls Sta 293+78.672 θs = 2°33'28.3" Ls = 125.000 LT = 83.342 ST = 41.675
---	--	---



-Y8-

Pls Sta 25+18.527 θs = 5°43'46.5" Ls = 60.000 LT = 40.021 ST = 20.019	Pls Sta 26+12.936 Δ = 27°52'03.2" (RT) L = 145.914 T = 74.430 R = 300.000 SE = 8%	Pls Sta 27+04.439 θs = 5°43'46.5" Ls = 60.000 LT = 40.021 ST = 20.019
---	--	---

-Y8-

Pls Sta 28+62.129 θs = 6°36'39.8" Ls = 60.000 LT = 40.028 ST = 20.025	Pls Sta 29+75.166 Δ = 39°23'20.2" (LT) L = 178.741 T = 93.065 R = 260.000 SE = 8%
---	--

RAMP 'C'

Pls Sta 0+20.001 θs = 1°12'44.8" Ls = 60.000 LT = 40.001 ST = 20.001 R = 1417.700 SE = 4%
---

RAMP 'C'

Pls Sta 1+00.009 θs = 3°49'11.0" Ls = 60.000 LT = 40.008 ST = 20.008
--

RAMP 'C'

Pls Sta 1+91.604 Δ = 18°04'55.7" (RT) L = 142.017 T = 71.604 R = 450.000 SE = 6%
---

RAMP 'C'

Pls Sta 2+82.025 θs = 3°49'11.0" Ls = 60.000 LT = 40.009 ST = 20.008
--

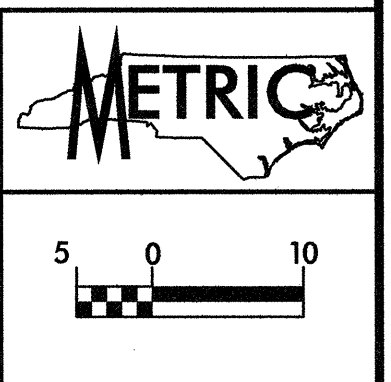
-Y8A- POT 10+80.000  
END CONSTRUCTION

RAMP 'C'

Pls Sta 3+64.440 θs = 5°03'19.8" Ls = 60.000 LT = 40.016 ST = 20.015	Pls Sta 4+63.094 Δ = 26°03'21.7" (LT) L = 154.620 T = 78.670 R = 340.000 SE = 7%
--	---

DENOTES REMOVAL OF EXIST. PAVEMENT

SEE SHEET NO. 58 FOR LINE -L- GRADE AND PROFILE.  
SEE SHEET NO. 88 FOR RAMP C GRADE AND PROFILE.  
SEE SHEET NO. 124 FOR LINE -Y8- GRADE AND PROFILE.  
SEE SHEET NO. 131 FOR LINE -Y8A- GRADE AND PROFILE.



CONST. REV.  
R/W REV.

TGS ENGINEERS  
975 WALNUT STREET, SUITE 141  
CARY, NC 27511  
PH (919) 319-8850

PROJECT REFERENCE NO. R-513C	SHEET NO. 17
R/W SHEET NO.	

ROADWAY DESIGN ENGINEER NORTH CAROLINA PROFESSIONAL SEAL 12300 CHARLES LEE FLORE 7/19/04	HYDRAULICS ENGINEER NORTH CAROLINA PROFESSIONAL SEAL 20754 STEPHEN S. STEPHENS 7/19/04
---	---