

REVISIONS		
-Y9- 8X		
Pls Sta 21+4705 Δs = 5' 31" 46.2' Ls = 60,000 LT = 40,029 ST = 20,019	Pls Sta 22+13264 Δs = 5' 31" 46.2' Ls = 60,000 LT = 40,029 ST = 20,019	Pls Sta 22+43263 Δs = 5' 31" 46.2' Ls = 60,000 LT = 40,029 ST = 20,019
-Y9-		
Pls Sta 24+19280 Δs = 7' 39" 24" Ls = 60,000 LT = 40,036 ST = 20,032	Pls Sta 25+19284 Δs = 7' 39" 24" Ls = 60,000 LT = 40,036 ST = 20,032	Pls Sta 26+19280 Δs = 7' 39" 24" Ls = 60,000 LT = 40,036 ST = 20,032

-Y9- ST 23+23.844		
BEN E. PITTMAN, JR. DB 200 PG 108		

-Y4-		
Pls Sta 11+17361 Δs = 2' 24" 53.2' Ls = 50,000 LT = 33,338 ST = 16,671	Pls Sta 12+17378 Δs = 1' 17" 58.2' (RT) Ls = 71,368 LT = 38,669 ST = 19,334	Pls Sta 13+18063 Δs = 2' 24" 53.2' Ls = 50,000 LT = 33,338 ST = 16,671
-Y4-		
Pls Sta 29+10884 Δs = 7' 39" 24" Ls = 60,000 LT = 40,036 ST = 20,032	Pls Sta 29+14309 Δs = 8' 03" 58.2' (LT) Ls = 64,496 LT = 40,036 ST = 20,032	Pls Sta 30+106376 Δs = 7' 39" 24" Ls = 60,000 LT = 40,036 ST = 20,032

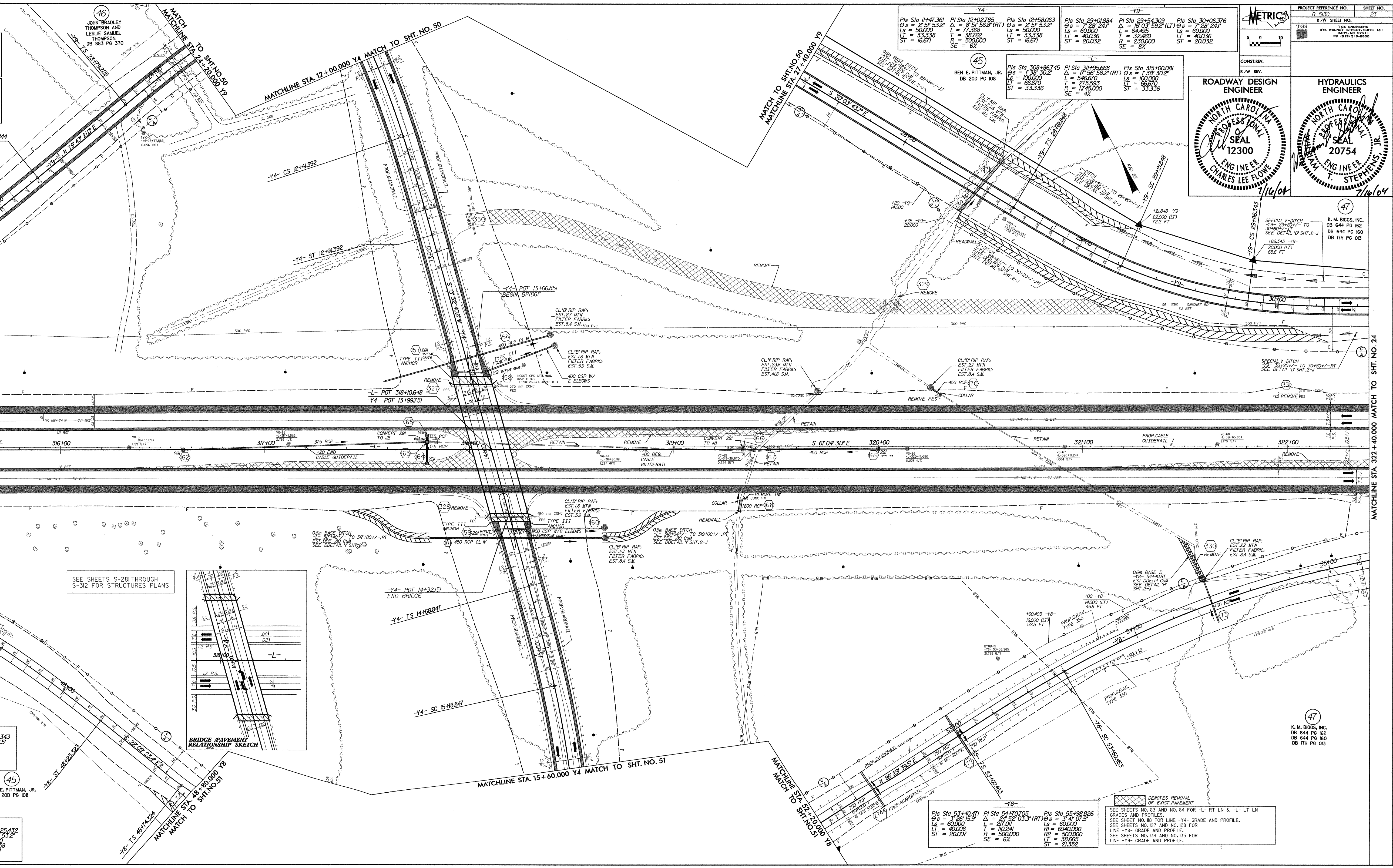
-Y4-		
Pls Sta 11+17361 Δs = 2' 24" 53.2' Ls = 50,000 LT = 33,338 ST = 16,671	Pls Sta 12+17378 Δs = 1' 17" 58.2' (RT) Ls = 71,368 LT = 38,669 ST = 19,334	Pls Sta 13+18063 Δs = 2' 24" 53.2' Ls = 50,000 LT = 33,338 ST = 16,671
-Y4-		
Pls Sta 29+10884 Δs = 7' 39" 24" Ls = 60,000 LT = 40,036 ST = 20,032	Pls Sta 29+14309 Δs = 8' 03" 58.2' (LT) Ls = 64,496 LT = 40,036 ST = 20,032	Pls Sta 30+106376 Δs = 7' 39" 24" Ls = 60,000 LT = 40,036 ST = 20,032

-Y8-		
Pls Sta 45+77705 Δs = 6' 44" 28.4' Ls = 60,000 LT = 40,036 ST = 20,032	Pls Sta 46+184050 Δs = 5' 03" 50.8' (RT) Ls = 62,851 LT = 40,029 ST = 20,019	Pls Sta 47+183343 Δs = 5' 43" 46.5' Ls = 60,000 LT = 40,029 ST = 20,019
-Y8-		
Pls Sta 49+14357 Δs = 7' 09" 43" Ls = 60,000 LT = 40,033 ST = 20,030	Pls Sta 50+100516 Δs = 3' 03" 50.8' (LT) Ls = 62,851 LT = 40,029 ST = 20,019	BEN E. PITTMAN, JR. DB 200 PG 108

-Y4-		
Pls Sta 15+102185 Δs = 2' 24" 53.2' Ls = 50,000 LT = 33,338 ST = 16,671	Pls Sta 15+163206 Δs = 1' 18" 12.3' (RT) Ls = 89,814 LT = 46,079 ST = 23,039	Pls Sta 16+125432 Δs = 2' 24" 53.2' Ls = 50,000 LT = 33,338 ST = 16,671

-Y8-		
Pls Sta 45+77705 Δs = 6' 44" 28.4' Ls = 60,000 LT = 40,036 ST = 20,032	Pls Sta 46+184050 Δs = 5' 03" 50.8' (RT) Ls = 62,851 LT = 40,029 ST = 20,019	Pls Sta 47+183343 Δs = 5' 43" 46.5' Ls = 60,000 LT = 40,029 ST = 20,019
-Y8-		
Pls Sta 49+14357 Δs = 7' 09" 43" Ls = 60,000 LT = 40,033 ST = 20,030	Pls Sta 50+100516 Δs = 3' 03" 50.8' (LT) Ls = 62,851 LT = 40,029 ST = 20,019	BEN E. PITTMAN, JR. DB 200 PG 108

-Y4-		
Pls Sta 15+102185 Δs = 2' 24" 53.2' Ls = 50,000 LT = 33,338 ST = 16,671	Pls Sta 15+163206 Δs = 1' 18" 12.3' (RT) Ls = 89,814 LT = 46,079 ST = 23,039	Pls Sta 16+125432 Δs = 2' 24" 53.2' Ls = 50,000 LT = 33,338 ST = 16,671



PROJECT REFERENCE NO. R-5130 SHEET NO. 23

R/W SHEET NO. 141

TOP ENGINEER
715 WALNUT STREET, SUITE 141
PH 910 519-8850

CONST. BY
B.W. REV.

ROADWAY DESIGN ENGINEER
NORTH CAROLINA PROFESSIONAL SEAL 12300
ENGINEER
CHARLES LEE FLOTE
1/16/04

HYDRAULICS ENGINEER
NORTH CAROLINA PROFESSIONAL SEAL 20754
ENGINEER
T. STEPHENS JR.
1/16/04

K. M. BIGGS, INC.
DB 644 PG 62
DB 644 PG 60
DB 17H PG 03