

REVISIONS

-L-

PI Sta 326+78.592
 $\Delta = 4^{\circ} 23' 49.6''$ (RT)
 L = 536.058
 T = 268.160
 R = 6,985.000
 SE = N.C.

47

K. M. BIGGS, INC.
 DB 644 PG 162
 DB 644 PG 160
 DB 17H PG 013

PROJECT REFERENCE NO. R-5130 SHEET NO. 24

R/W SHEET NO.

ROADWAY DESIGN ENGINEER

HYDRAULICS ENGINEER

CONST. REV. _____

R/W REV. _____

5 0 10

SEAL 12300

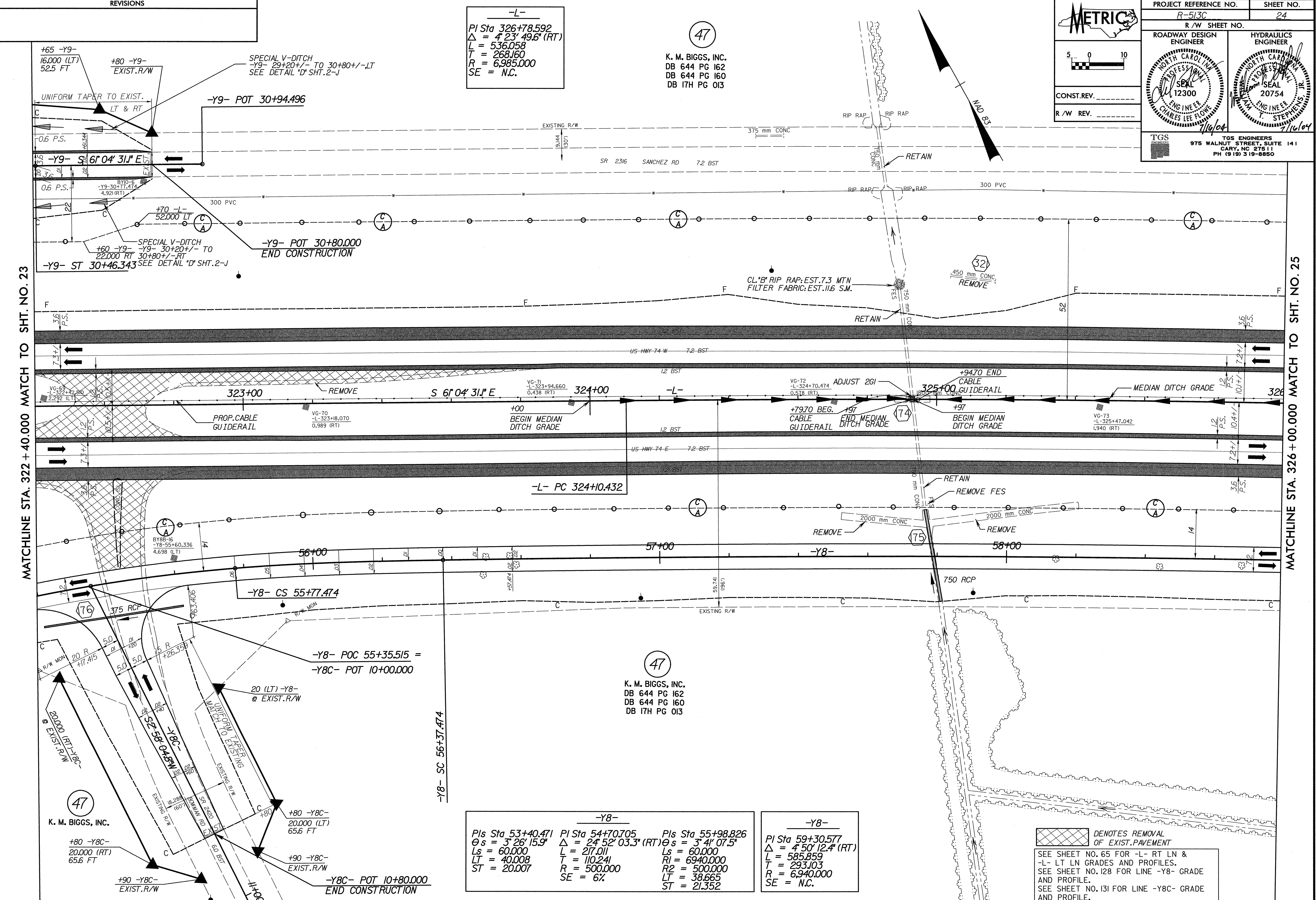
SEAL 20754

TGS ENGINEERS

975 WALNUT STREET, SUITE 141
 CARY, NC 27511
 PH (919) 319-8850

MATCHLINE STA. 322 + 40.000 MATCH TO SHT. NO. 23

MATCHLINE STA. 326 + 00.000 MATCH TO SHT. NO. 25



47

K. M. BIGGS, INC.

+80 -Y8C-
20,000 (RT)
65.6 FT

+90 -Y8C-
EXIST. R/W

-Y8-

PIs Sta 53+40.471	PI Sta 54+70.705	PIs Sta 55+98.826
$\theta s = 3^{\circ} 26' 15.9''$	$\Delta = 24^{\circ} 52' 03.3''$ (RT)	$\theta s = 3^{\circ} 41' 07.5''$
Ls = 60.000	L = 217.011	Ls = 60.000
LT = 40.008	T = 110.241	RI = 6940.000
ST = 20.007	R = 500.000	R2 = 500.000
	SE = 6%	LT = 38.665
		ST = 21.352

-Y8-

PI Sta 59+30.577
 $\Delta = 4^{\circ} 50' 12.4''$ (RT)
 L = 585.859
 T = 293.103
 R = 6,940.000
 SE = N.C.

DENOTES REMOVAL OF EXIST. PAVEMENT

SEE SHEET NO. 65 FOR -L- RT LN & -L- LT LN GRADES AND PROFILES.

SEE SHEET NO. 128 FOR LINE -Y8- GRADE AND PROFILE.

SEE SHEET NO. 131 FOR LINE -Y8C- GRADE AND PROFILE.