

REVISIONS

-Y8-	-L-
PI Sta 59+30.577	PI Sta 326+78.592
$\Delta = 4' 50'' 12.4''$ (RT)	$\Delta = 4' 23'' 49.6''$ (RT)
L = 585.859	L = 536.058
T = 293.003	T = 268.160
R = 6,940.000	R = 6,985.000
SE = N.C.	SE = N.C.

47
K. M. BIGGS, INC.
DB 644 PG 162
DB 644 PG 160
DB 17H PG 013

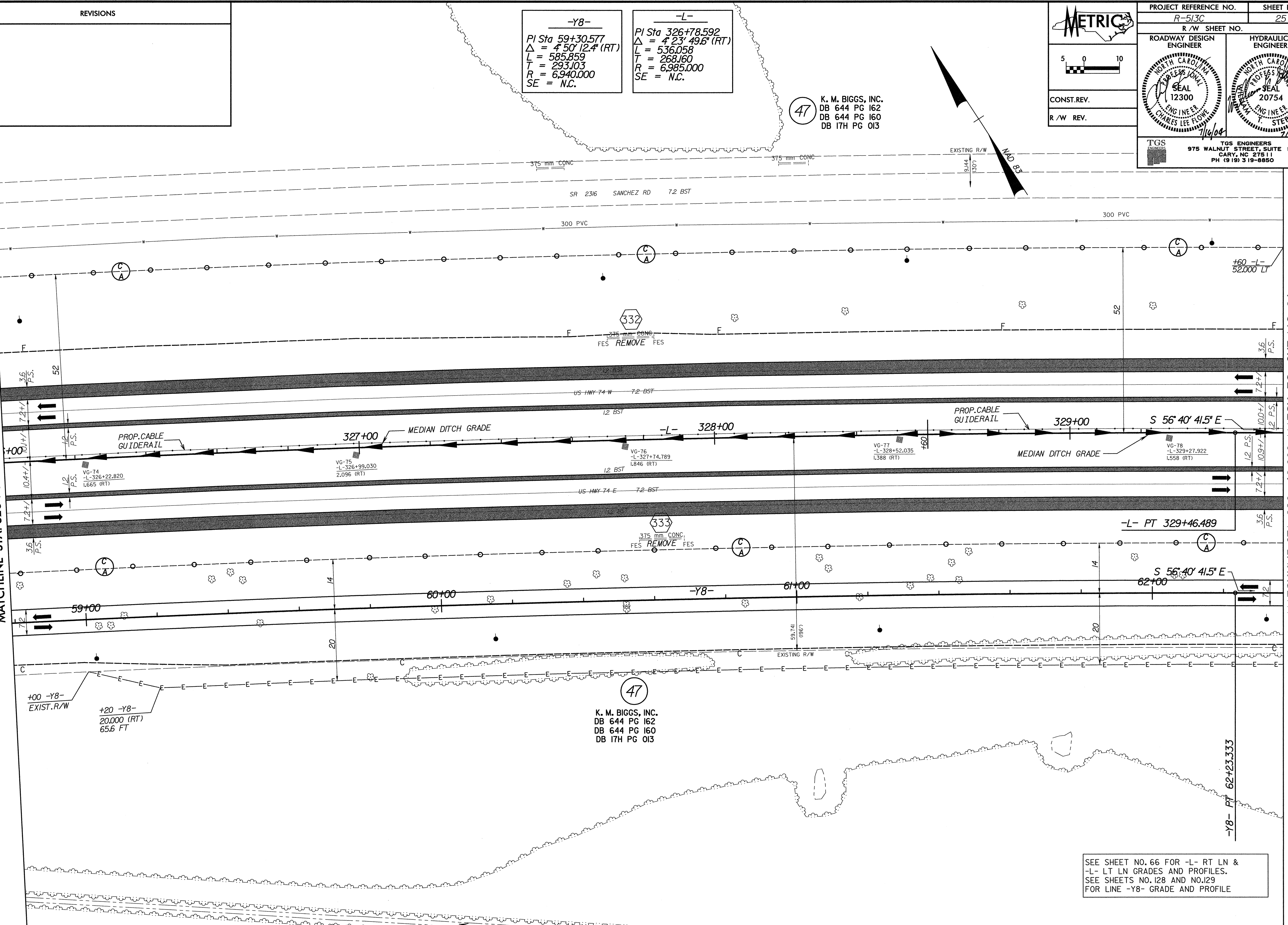
METRIC

CONST. REV.
R/W REV.

PROJECT REFERENCE NO. R-513C	SHEET NO. 25
R/W SHEET NO.	
ROADWAY DESIGN ENGINEER SEAL 12300 CHARLES LEE FLORE 7/16/04	HYDRAULICS ENGINEER SEAL 20754 T. STEPHENS, JR. 7/16/04
TGS ENGINEERS 975 WALNUT STREET, SUITE 141 CARY, NC 27511 PH (919) 319-8850	

MATCHLINE STA. 326 + 00.000 MATCH TO SHT. NO. 24

MATCHLINE STA. 329 + 60.000 MATCH TO SHT. NO. 26



47
K. M. BIGGS, INC.
DB 644 PG 162
DB 644 PG 160
DB 17H PG 013

SEE SHEET NO. 66 FOR -L- RT LN &
-L- LT LN GRADES AND PROFILES.
SEE SHEETS NO. 128 AND NO. 129
FOR LINE -Y8- GRADE AND PROFILE

DATE PLOTTED: 07/16/2004 06:46:49 AM

DATE PLOTTED: 07/16/2004 06:46:49 AM