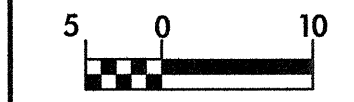


REVISIONS

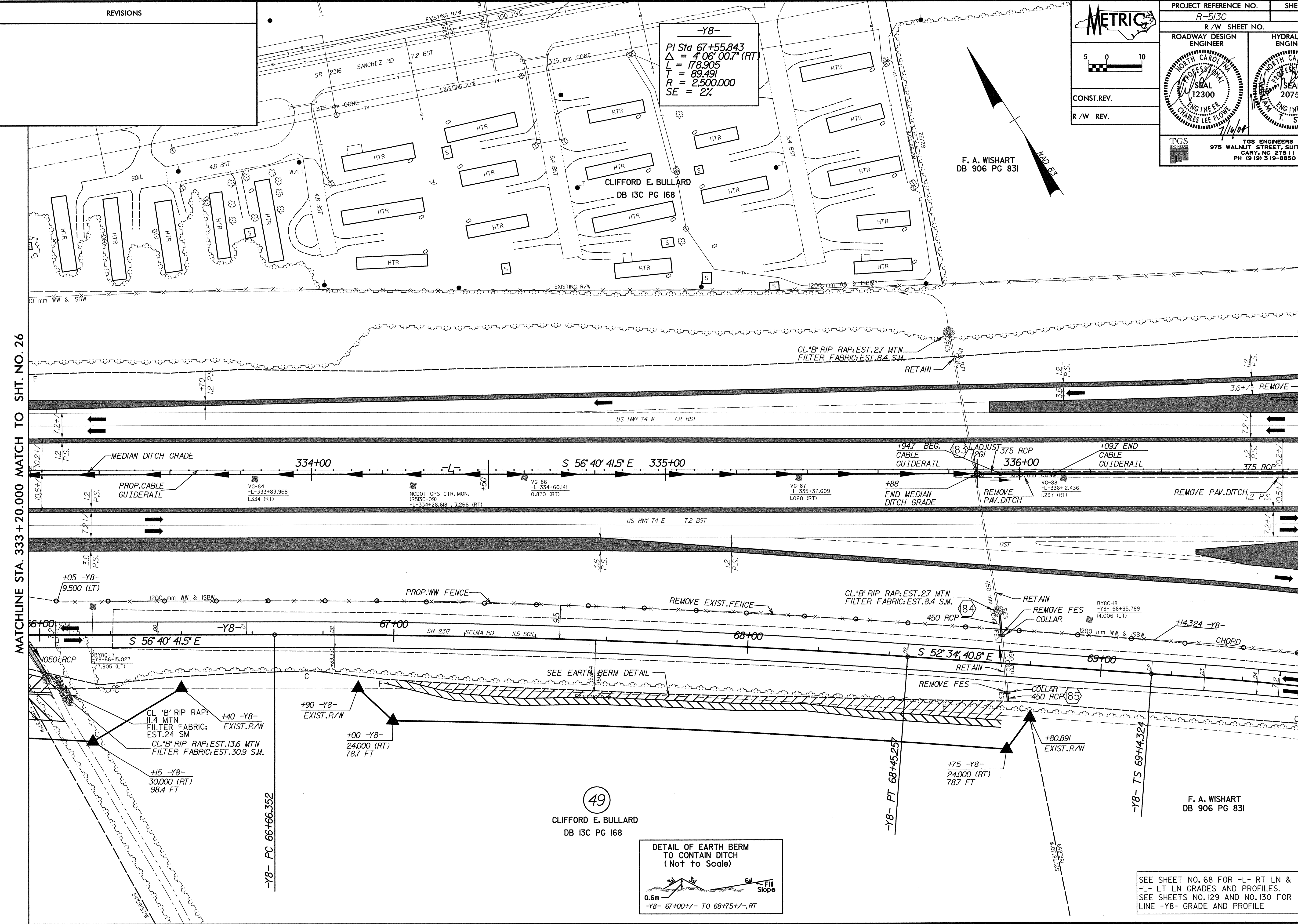


CONST. REV.  
R/W REV.

PROJECT REFERENCE NO. R-513C	SHEET NO. 27
R/W SHEET NO.	
ROADWAY DESIGN ENGINEER CHARLES LEE FLOWERS 12300 7/16/04	HYDRAULICS ENGINEER T. STEPHENS, JR. 20754 7/16/04
TGS ENGINEERS 975 WALNUT STREET, SUITE 141 CARY, NC 27511 PH (919) 319-8850	

-Y8-  
PI Sta 67+55.843  
 $\Delta = 4'06''00.7''$  (RT)  
L = 178.905  
T = 89.491  
R = 2,500.000  
SE = 2%

F. A. WISHART  
DB 906 PG 831



MATCHLINE STA. 333 + 20.000 MATCH TO SHT. NO. 26

MATCHLINE STA. 336 + 80.000 MATCH TO SHT. NO. 28

+40 -Y8-  
EXIST. R/W  
CL 'B' RIP RAP: EST. 11.4 MTN  
FILTER FABRIC: EST. 24 SM  
CL 'B' RIP RAP: EST. 13.6 MTN  
FILTER FABRIC: EST. 30.9 S.M.

+15 -Y8-  
30,000 (RT)  
98.4 FT

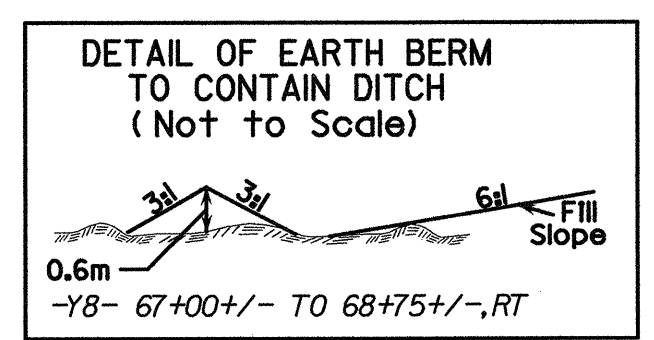
+90 -Y8-  
EXIST. R/W  
24,000 (RT)  
78.7 FT

+100 -Y8-  
24,000 (RT)  
78.7 FT

+75 -Y8-  
24,000 (RT)  
78.7 FT

+80.891  
EXIST. R/W

49  
CLIFFORD E. BULLARD  
DB 13C PG 168



SEE SHEET NO. 68 FOR -L- RT LN & -L- LT LN GRADES AND PROFILES.  
SEE SHEETS NO. 129 AND NO. 130 FOR LINE -Y8- GRADE AND PROFILE

SYSTEMS

R:\PROJECTS\10413\10413.DWG, PLOT DATE: 07/15/2004 01:36:01 PM