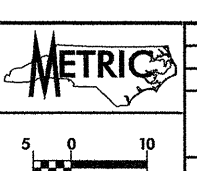
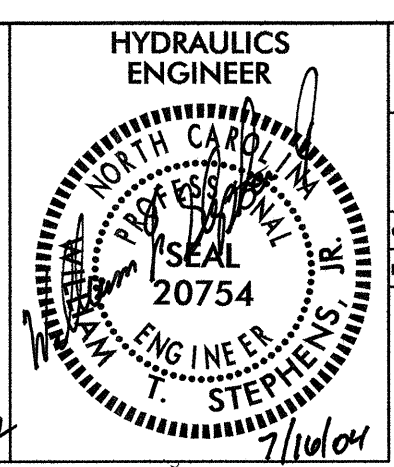
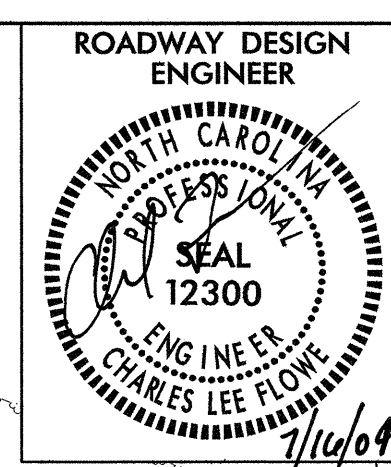


REVISIONS

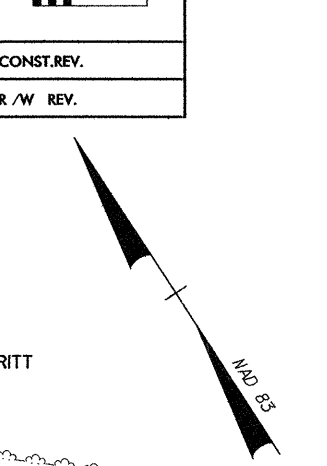
F. A. WISHART
DB 906 PG 83



PROJECT REFERENCE NO. 22
SHEET NO. 22

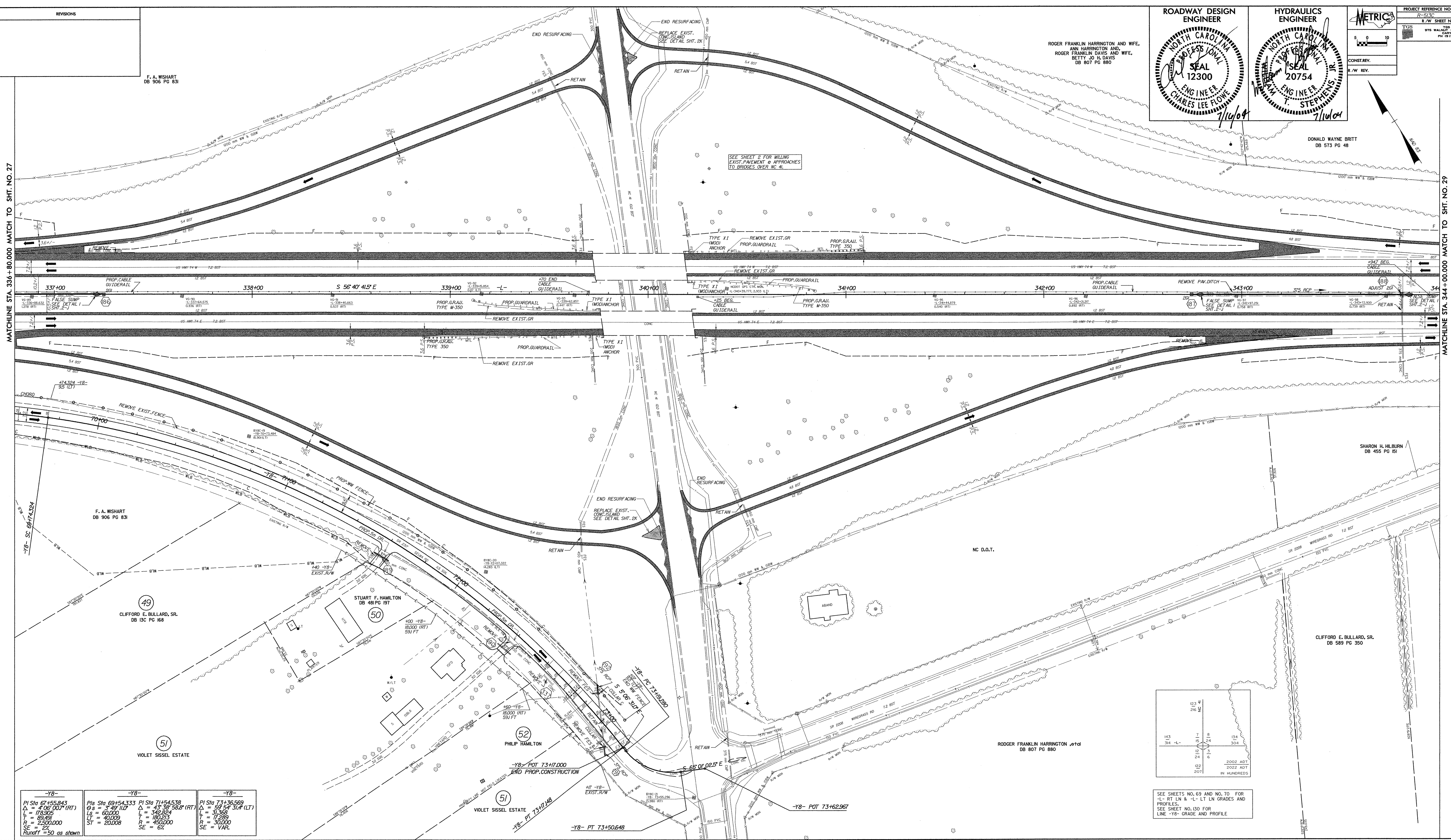
ROGER FRANKLIN HARRINGTON AND WIFE,
ANN HARRINGTON AND,
ROGER FRANKLIN DAVIS AND WIFE,
BETTY J. DAVIS
DB 807 PG 880

DONALD WAYNE BRITT
DB 573 PG 48



MATCHLINE STA. 336+80.000 MATCH TO SHT. NO. 27

MATCHLINE STA. 344+00.000 MATCH TO SHT. NO. 29



-Y8-	-Y8-	-Y8-
PI Sta 67+55.843 Δ = 4°06'00" (RT) L = 178.86 T = 69.49 R = 2500.000 SE = 2°	PI Sta 69+54.333 Δ = 3°28'11" L = 60.00 T = 40.009 R = 20.008	PI Sta 71+54.530 Δ = 43°38'58" (RT) L = 34.58 T = 180.213 R = 400.000 SE = 6°
Runoff = 50 as shown		

103	104	105	106
107	108	109	110
111	112	113	114
115	116	117	118
119	120	121	122

SEE SHEETS NO. 69 AND NO. 70 FOR
"L" RT LN & "L" LT LN GRADES AND
PROFILES.
SEE SHEET NO. 150 FOR
LINE -Y8- GRADE AND PROFILE