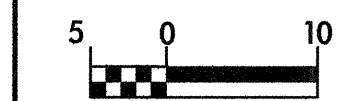


REVISIONS



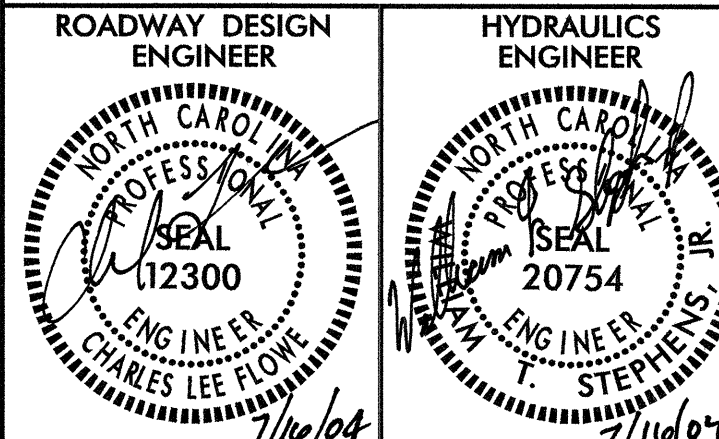
CONST. REV.

R/W REV.

PROJECT REFERENCE NO. R-513C SHEET NO. 29

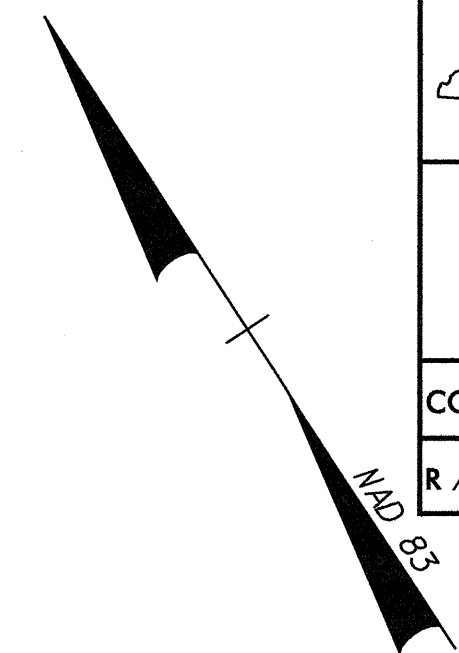
R/W SHEET NO.

ROADWAY DESIGN ENGINEER HYDRAULICS ENGINEER



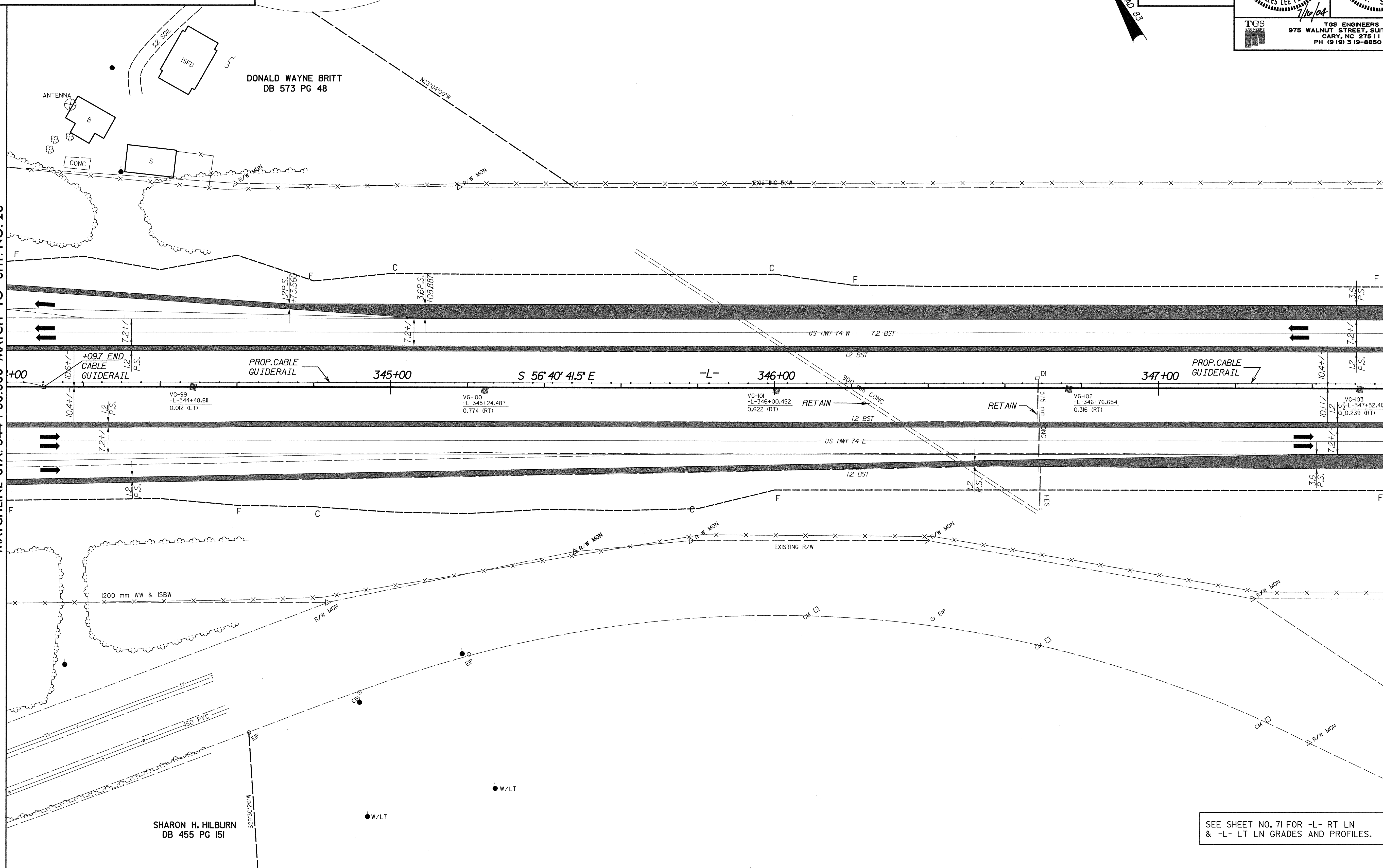
TGS ENGINEERS 975 WALNUT STREET, SUITE 141 CARY, NC 27511 PH (919) 319-8850

ERLINE B. CRANFILL DB 421 PG 349



MATCHLINE STA. 344 + 00.000 MATCH TO SHT. NO. 28

MATCHLINE STA. 347 + 60.000 MATCH TO SHT. NO. 30



DONALD WAYNE BRITT DB 573 PG 48

SHARON H. HILBURN DB 455 PG 151

SEE SHEET NO. 71 FOR -L- RT LN & -L- LT LN GRADES AND PROFILES.

6/10/04