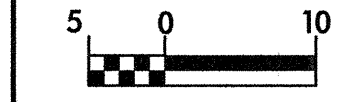


REVISIONS



CONST. REV.

R/W REV.

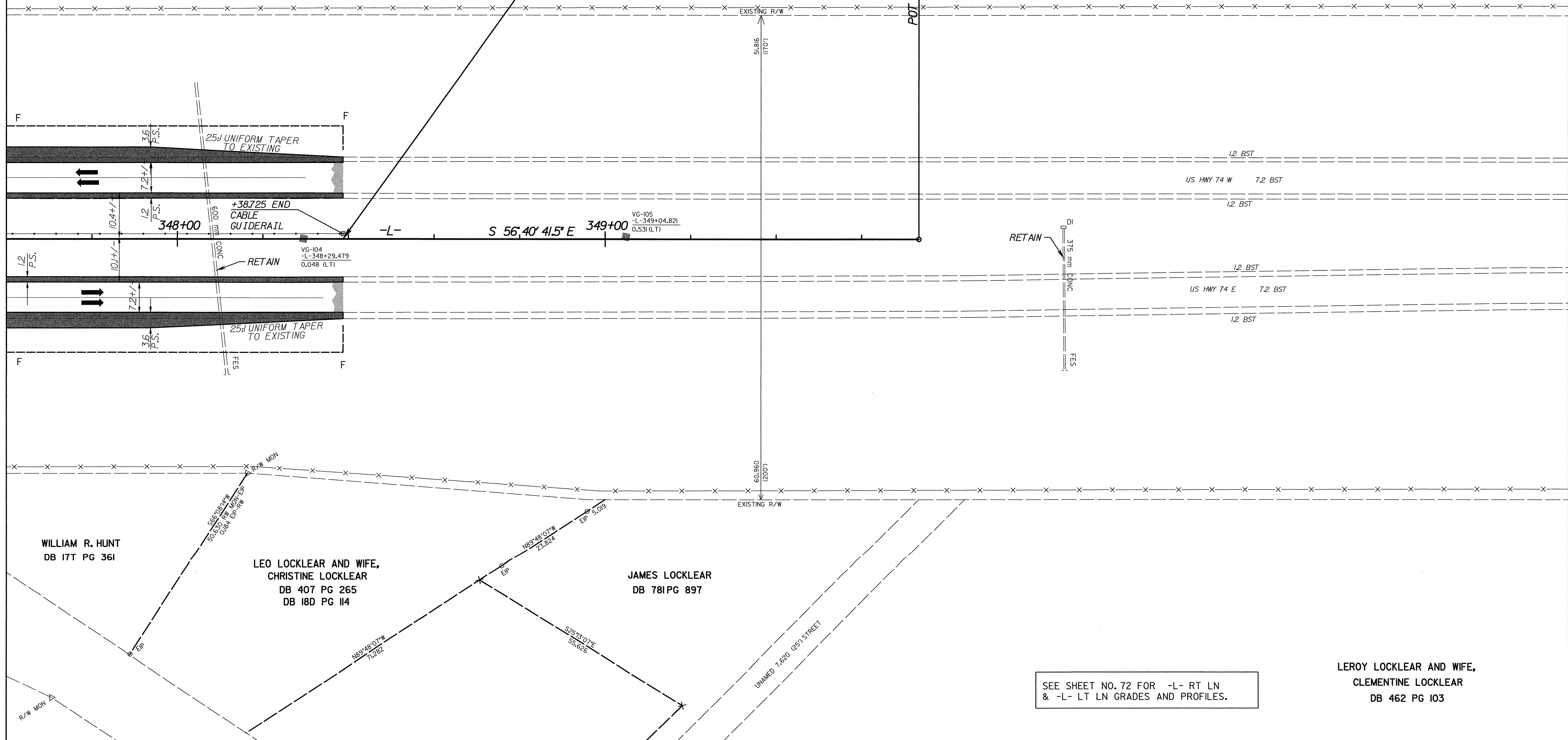
PROJECT REFERENCE NO. R-513C	SHEET NO. 30
R/W SHEET NO.	
ROADWAY DESIGN ENGINEER SEAL 12300 CHARLES LEE FLOWE 7/26/04	HYDRAULICS ENGINEER SEAL 20754 T. STEPHENS JR. 7/26/04
TGS ENGINEERS 975 WALNUT STREET, SUITE 141 CARY, NC 27511 PH (919) 319-8850	

ERLINE B. CRANFILL  
DB 421 PG 349

"DMS #2"  
ON US 74 WESTBOUND  
APPROXIMATELY 3.22 km  
EAST OF NC 41

MATCHLINE STA. 347 + 60.000 MATCH TO SHT. NO.29

-L- POT 348+38.725  
END STATE PROJECT 6.469002T  
END CONSTRUCTION



WILLIAM R. HUNT  
DB 177 PG 361

LEO LOCKLEAR AND WIFE,  
CHRISTINE LOCKLEAR  
DB 407 PG 265  
DB 18D PG 114

JAMES LOCKLEAR  
DB 781 PG 897

LERoy LOCKLEAR AND WIFE,  
CLEMENTINE LOCKLEAR  
DB 462 PG 103

SEE SHEET NO. 72 FOR -L- RT LN  
& -L- LT LN GRADES AND PROFILES.

6/10/04  
TGS ENGINEERS  
975 WALNUT STREET, SUITE 141  
CARY, NC 27511  
PH (919) 319-8850

V:\513C\WORK\513C30\_PSH\_07/23/2004\_11:52:06 AM