

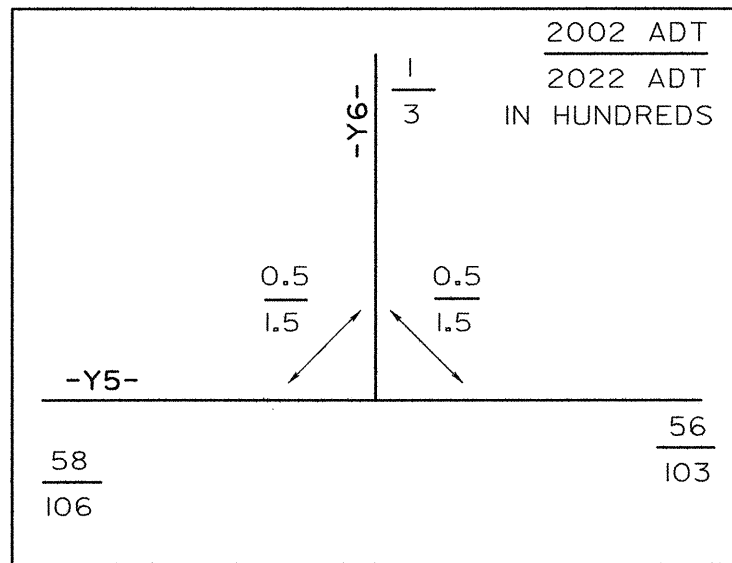
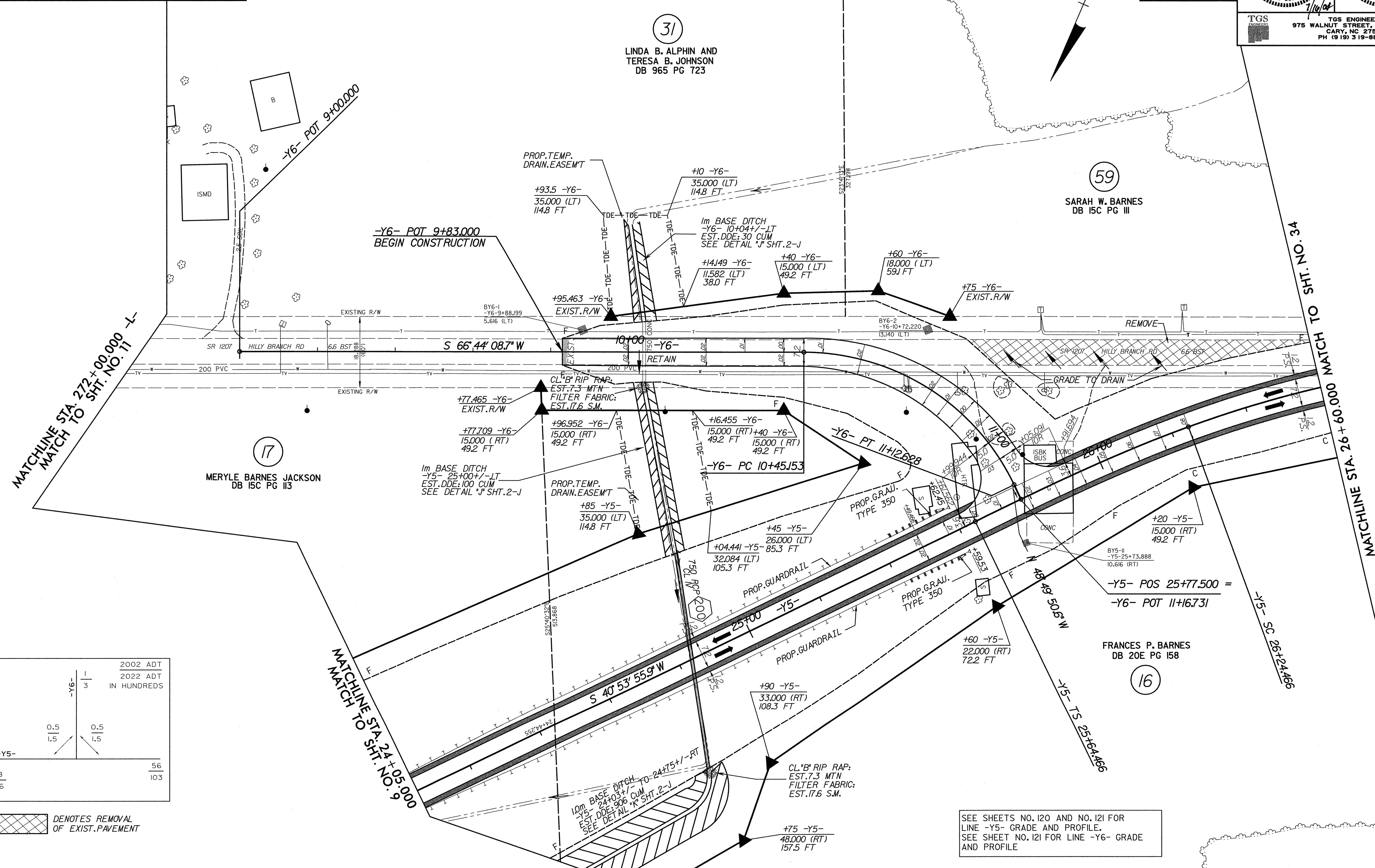
REVISIONS

-Y6-	-Y5-		
PI Sta 10+82.962	PIs Sta 26+04.487	PI Sta 26+62.001	PIs Sta 27+19.167
$\Delta = 64' 28' 00.7" (RT)$	$\Theta s = 5' 43' 46.5"$	$\Delta = 14' 15' 47.5" (RT)$	$\Theta s = 5' 43' 46.5"$
L = 67.475	Ls = 60.000	L = 74.682	Ls = 60.000
T = 37.809	LT = 40.021	T = 37.535	LT = 40.021
R = 60.000	ST = 20.019	R = 300.000	ST = 20.019
SE = AS SHOWN		SE = 8%	

**METRIC**

CONST. REV.  
R/W REV.

PROJECT REFERENCE NO. R-513C	SHEET NO. 33
R/W SHEET NO.	
ROADWAY DESIGN ENGINEER 12300	HYDRAULICS ENGINEER 20754
CHARLES LEE FLOWIE	T. STEPHENS
TGS ENGINEERS 975 WALNUT STREET, SUITE 141 CARY, NC 27511 PH (919) 319-8850	



DENOTES REMOVAL OF EXIST. PAVEMENT

SEE SHEETS NO. 120 AND NO. 121 FOR LINE -Y5- GRADE AND PROFILE.  
SEE SHEET NO. 121 FOR LINE -Y6- GRADE AND PROFILE.

07/15/2004 02:30:19 PM  
 L:\513\WORK\513\33.Plot  
 07/15/2004 02:30:19 PM