

REVISIONS

-Y2-			-Y2- LT			-Y2- RT		
Pls Sta 11+59.464	Pls Sta 14+38.589	Pls Sta 17+11.979	Pls Sta 11+48.906	Pls Sta 14+25.395	Pls Sta 16+96.249	Pls Sta 11+71.345	Pls Sta 14+51.788	Pls Sta 17+26.446
$\theta_s = 3^\circ 41' 18.9''$	$\Delta = 22^\circ 15' 18.7''$ (LT)	$\theta_s = 3^\circ 41' 18.9''$	$\theta_s = 3^\circ 43' 13.8''$	$\Delta = 22^\circ 11' 28.8''$ (LT)	$\theta_s = 3^\circ 43' 13.8''$	$\theta_s = 3^\circ 40' 22.1''$	$\Delta = 22^\circ 17' 12.2''$ (LT)	$\theta_s = 3^\circ 40' 22.1''$
$L_s = 150.000$	$L = 452.517$	$L_s = 150.000$	$L_s = 150.000$	$L = 447.345$	$L_s = 150.000$	$L_s = 150.000$	$L = 455.103$	$L_s = 150.000$
$LT = 100.022$	$T = 229.147$	$LT = 100.022$	$LT = 100.022$	$T = 226.511$	$LT = 100.022$	$LT = 100.022$	$T = 230.465$	$LT = 100.022$
$ST = 50.020$	$R = 1,165.000$	$ST = 50.020$	$ST = 50.020$	$R = 1,155.000$	$ST = 50.020$	$ST = 50.020$	$R = 1,170.000$	$ST = 50.020$
				$SE = 5\%$			$SE = 5\%$	

METRIC

5 0 10

CONST. REV.

R/W REV.

PROJECT REFERENCE NO. R-513C SHEET NO. 35

R/W SHEET NO.

ROADWAY DESIGN ENGINEER

HYDRAULICS ENGINEER

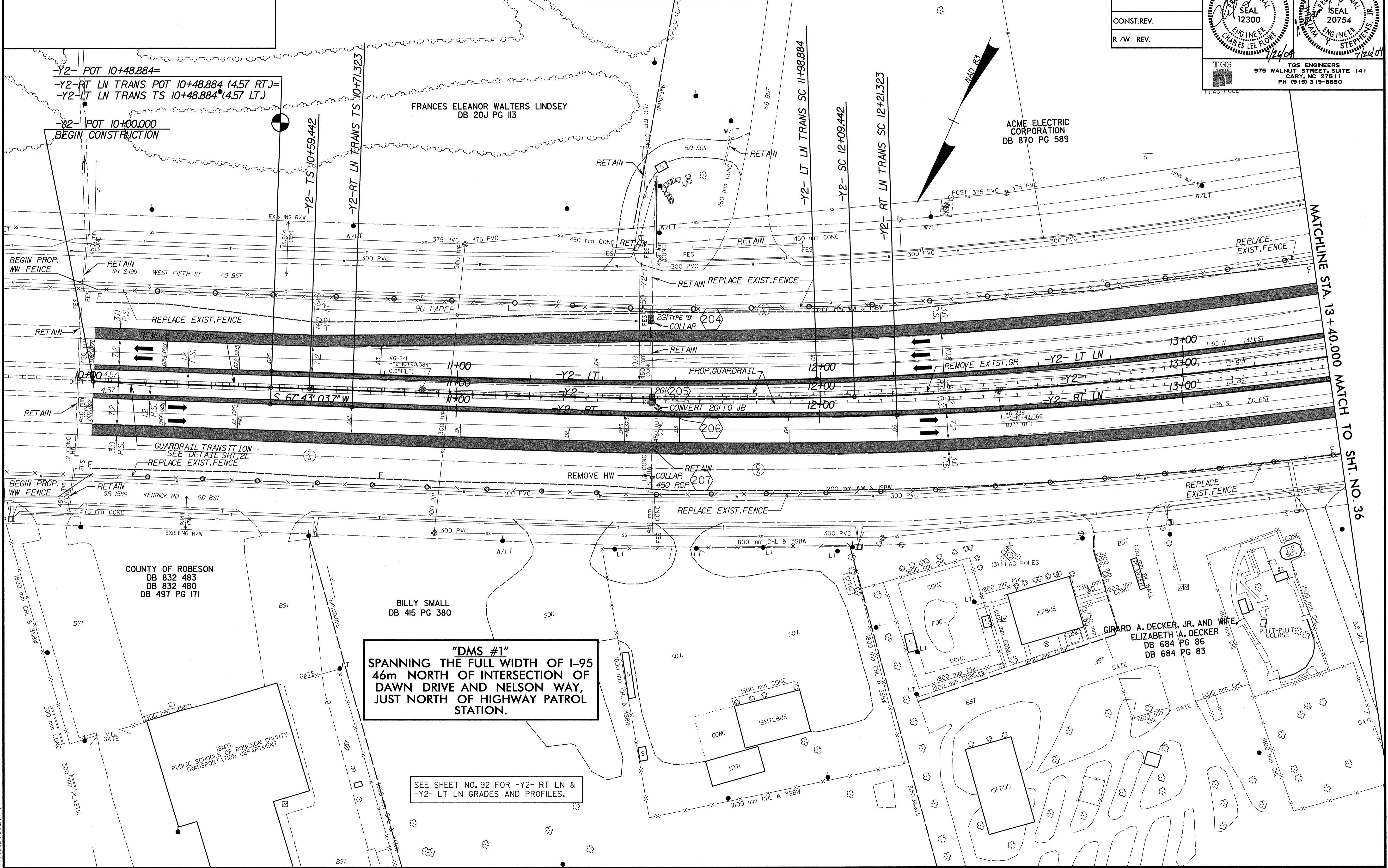
SEAL 12300

SEAL 20754

1/24/04

1/24/04

TGS ENGINEERS
975 WALNUT STREET, SUITE 141
CARY, NC 27511
PH (919) 319-8850



MATCHLINE STA. 13+40.000 MATCH TO SH. NO. 36

1/24/04

1/24/04