

REVISIONS

-Y2-

PI Sta 38+32.987  
 $\Delta = 21^{\circ} 01' 45.0"$  (RT)  
 $L = 1207.155$   
 $T = 610.446$   
 $R = 3,289.000$   
 $SE = 2.5\%$

PIs Sta 24+99.725  
 $\theta_s = 0^{\circ} 55' 55.5"$   
 $L_s = 100.540$   
 $LT = 67.028$   
 $ST = 33.514$

COAD

PI Sta 28+81.515  
 $\Delta = 12^{\circ} 51' 38.8"$  (RT)  
 $L = 693.628$   
 $T = 348.277$   
 $R = 3,090.169$   
 $SE = 2.5\%$

PI Sta 36+39.289  
 $\Delta = 14^{\circ} 09' 16.0"$  (RT)  
 $L = 820.648$   
 $T = 412.424$   
 $R = 3,321.900$   
 $SE = 2.5\%$

COAD

PIs Sta 40+80.614  
 $\theta_s = 1^{\circ} 29' 58.7"$   
 $L_s = 60.000$   
 $LT = 33.101$   
 $ST = 26.902$   
 $R1 = 3,321.900$   
 $R2 = 1,750.000$

PI Sta 42+09.841  
 $\Delta = 6^{\circ} 41' 34.3"$  (RT)  
 $L = 204.421$   
 $T = 102.327$   
 $R = 1,750.000$   
 $SE = 2.5\%$

PIs Sta 43+31.935  
 $\theta_s = 0^{\circ} 58' 56.0"$   
 $L_s = 60.000$   
 $LT = 40.001$   
 $ST = 20.001$

METRIC

CONST. REV.  
 R/W REV.

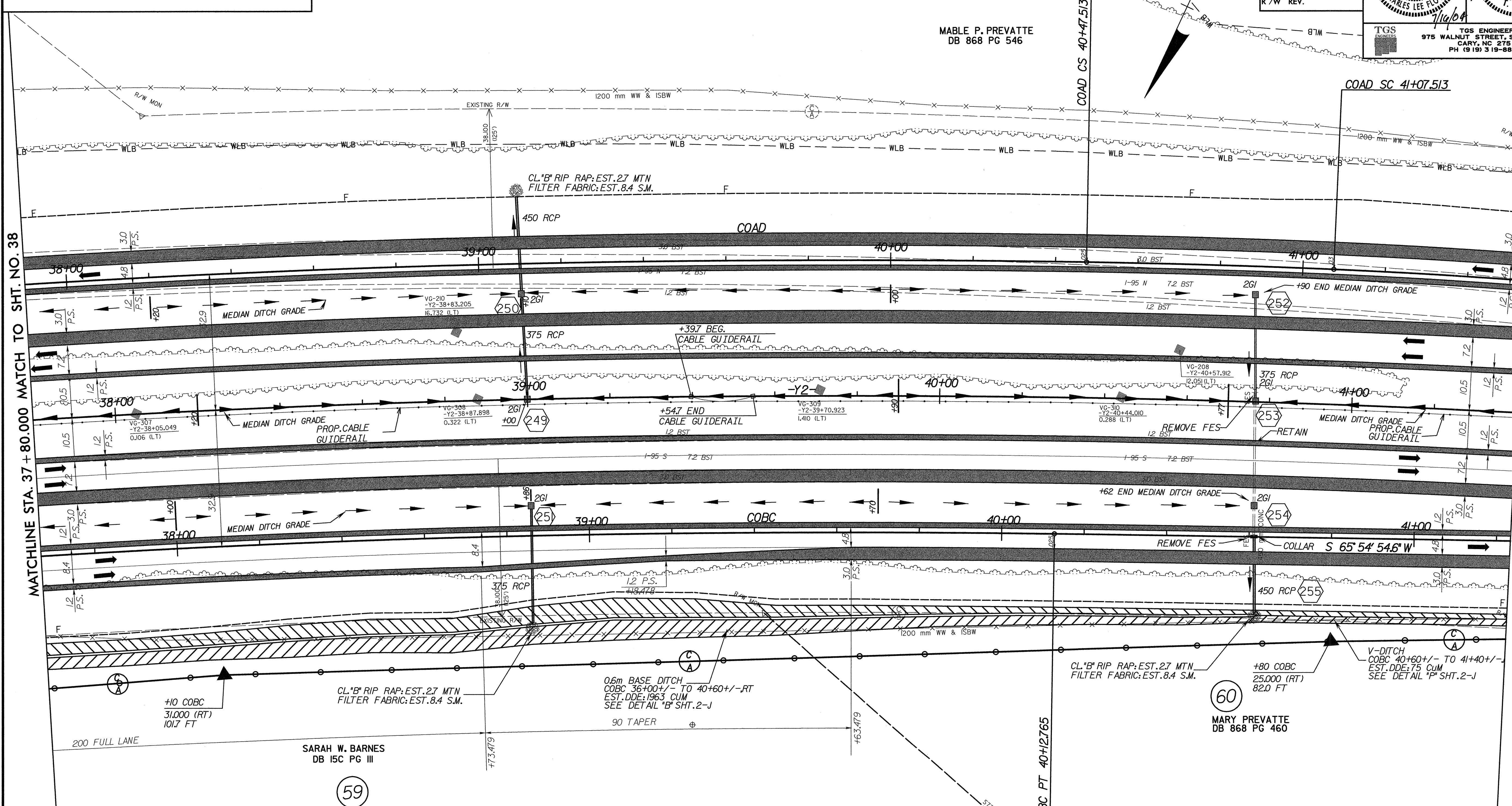
PROJECT REFERENCE NO. R-5/3C SHEET NO. 39

R/W SHEET NO.

ROADWAY DESIGN ENGINEER  
 NORTH CAROLINA PROFESSIONAL SEAL 12300  
 ENGINEER CHARLES LEE FLOW

HYDRAULICS ENGINEER  
 NORTH CAROLINA PROFESSIONAL SEAL 20754  
 ENGINEER T. STEPHENS

TGS ENGINEERS  
 975 WALNUT STREET, SUITE 141  
 CARY, NC 27511  
 PH (919) 319-8850



MATCHLINE STA. 37 + 80.000 MATCH TO SHT. NO. 38

MATCHLINE STA. 41 + 40.000 MATCH TO SHT. NO. 40

COBC

PIs Sta 25+03.567  
 $\theta_s = 0^{\circ} 58' 31.6"$   
 $L_s = 99.458$   
 $LT = 66.306$   
 $ST = 33.154$

PI Sta 28+77.312  
 $\Delta = 12^{\circ} 51' 02.7"$  (RT)  
 $L = 678.329$   
 $T = 340.593$   
 $R = 3,024.369$   
 $SE = 2.5\%$

PI Sta 36+15.914  
 $\Delta = 14^{\circ} 02' 13.2"$  (RT)  
 $L = 797.718$   
 $T = 400.866$   
 $R = 3,256.100$   
 $SE = 2.5\%$

SEE SHEETS NO. 99 & NO. 100 FOR -Y2- RT LN & -Y2- LT LN GRADES AND PROFILES.  
 SEE SHEET NO. 106 FOR COAD GRADE AND PROFILE.  
 SEE SHEETS NO. 109 AND NO. 110 FOR COBC GRADE AND PROFILE.

DATE PLOTTED: 07/15/2004 01:22:02 PM

DATE PLOTTED: 07/15/2004 01:22:02 PM