

REVISIONS

-Y2-

PI Sta 38+32.987
 $\Delta = 21' 01" 45.0" (RT)$
 $L = 1207.155$
 $T = 610.446$
 $R = 3,289,000$
 $SE = 2.5\%$

COAD

PIs Sta 40+80.614
 $\theta s = 1' 29" 58.7"$
 $Ls = 60.000$
 $LT = 33.101$
 $ST = 26.902$
 $RI = 3,321,900$
 $R2 = 1,750,000$

COAD

PI Sta 42+09.841
 $\Delta = 6' 41" 34.3" (RT)$
 $L = 204.421$
 $T = 102.327$
 $R = 1,750,000$
 $SE = 2.5\%$

COAD

PIs Sta 43+31.935
 $\theta s = 0' 58" 56.0"$
 $Ls = 60.000$
 $LT = 40.001$
 $ST = 20.001$

COBC

PIs Sta 42+92.641
 $\theta s = 1' 57" 51.9"$
 $Ls = 60.000$
 $LT = 40.002$
 $ST = 20.002$

COBC

PI Sta 43+32.020
 $\Delta = 2' 32" 16.3" (RT)$
 $L = 38.757$
 $T = 19.382$
 $R = 875,000$
 $SE = 5\%$

COBC

PIs Sta 43+75.621
 $\theta s = 2' 29" 23.5"$
 $Ls = 60.000$
 $LT = 35.784$
 $ST = 24.225$
 $RI = 3,271,300$
 $R2 = 875,000$

METRIC

PROJECT REFERENCE NO. R-513C SHEET NO. 40

R/W SHEET NO.

ROADWAY DESIGN ENGINEER

HYDRAULICS ENGINEER

PROFESSIONAL SEAL 12300

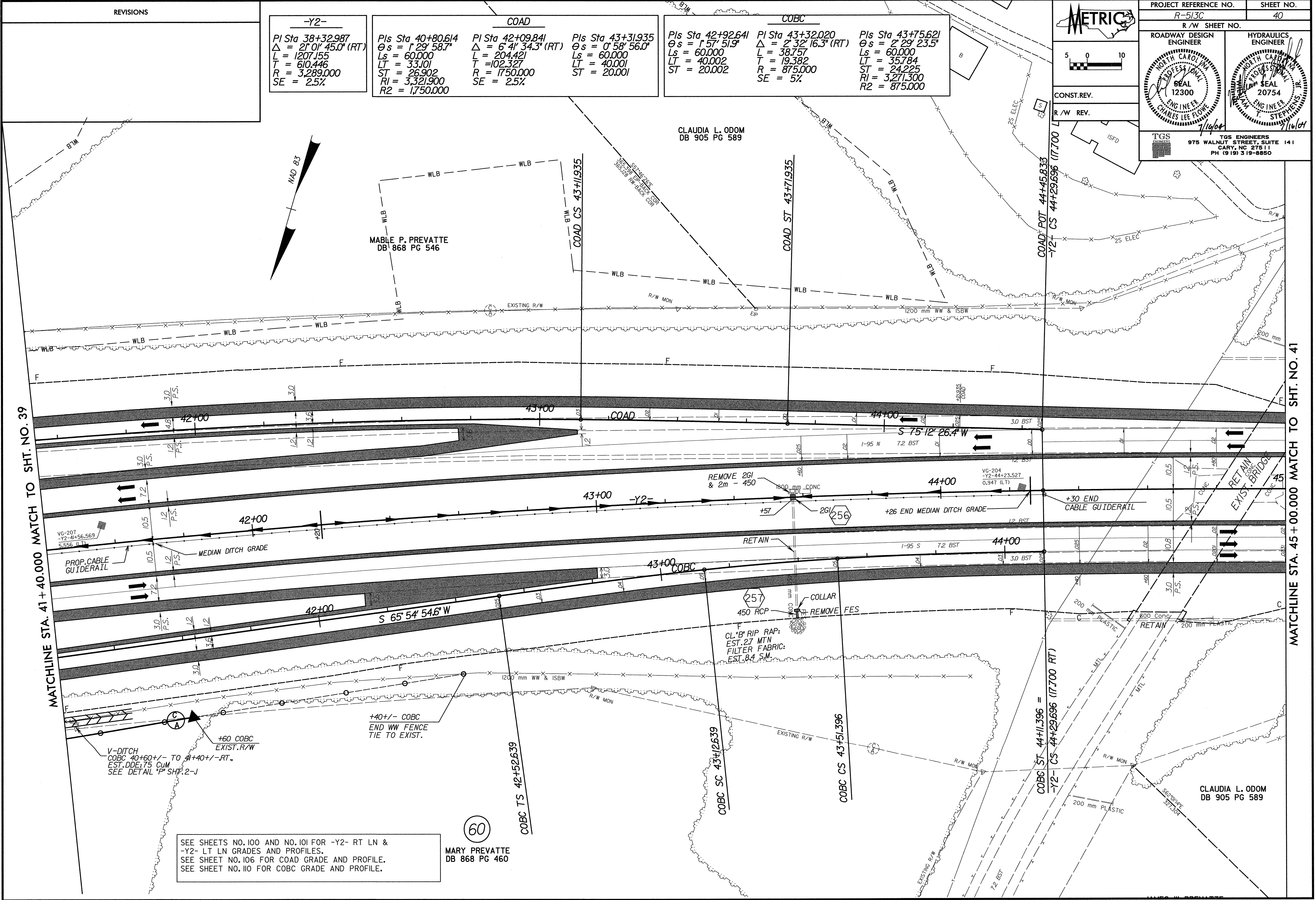
PROFESSIONAL SEAL 20754

ENGINEER CHARLES LEE FLOW

ENGINEER T. STEPHENS

TGS ENGINEERS

975 WALNUT STREET, SUITE 141
 CARY, NC 27511
 PH (919) 319-8850



SEE SHEETS NO. 100 AND NO. 101 FOR -Y2- RT LN & -Y2- LT LN GRADES AND PROFILES.
 SEE SHEET NO. 106 FOR COAD GRADE AND PROFILE.
 SEE SHEET NO. 110 FOR COBC GRADE AND PROFILE.

MARY PREVATTE
 DB 868 PG 460

DATE PLOTTED: 07/15/2004 01:14:49 PM
 PLOTTER: HPGL3000

DATE PLOTTED: 07/15/2004 01:14:49 PM
 PLOTTER: HPGL3000