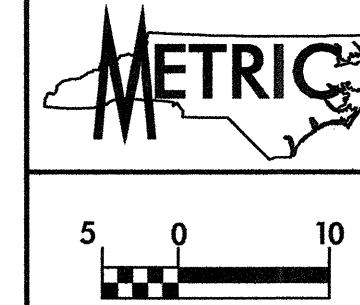


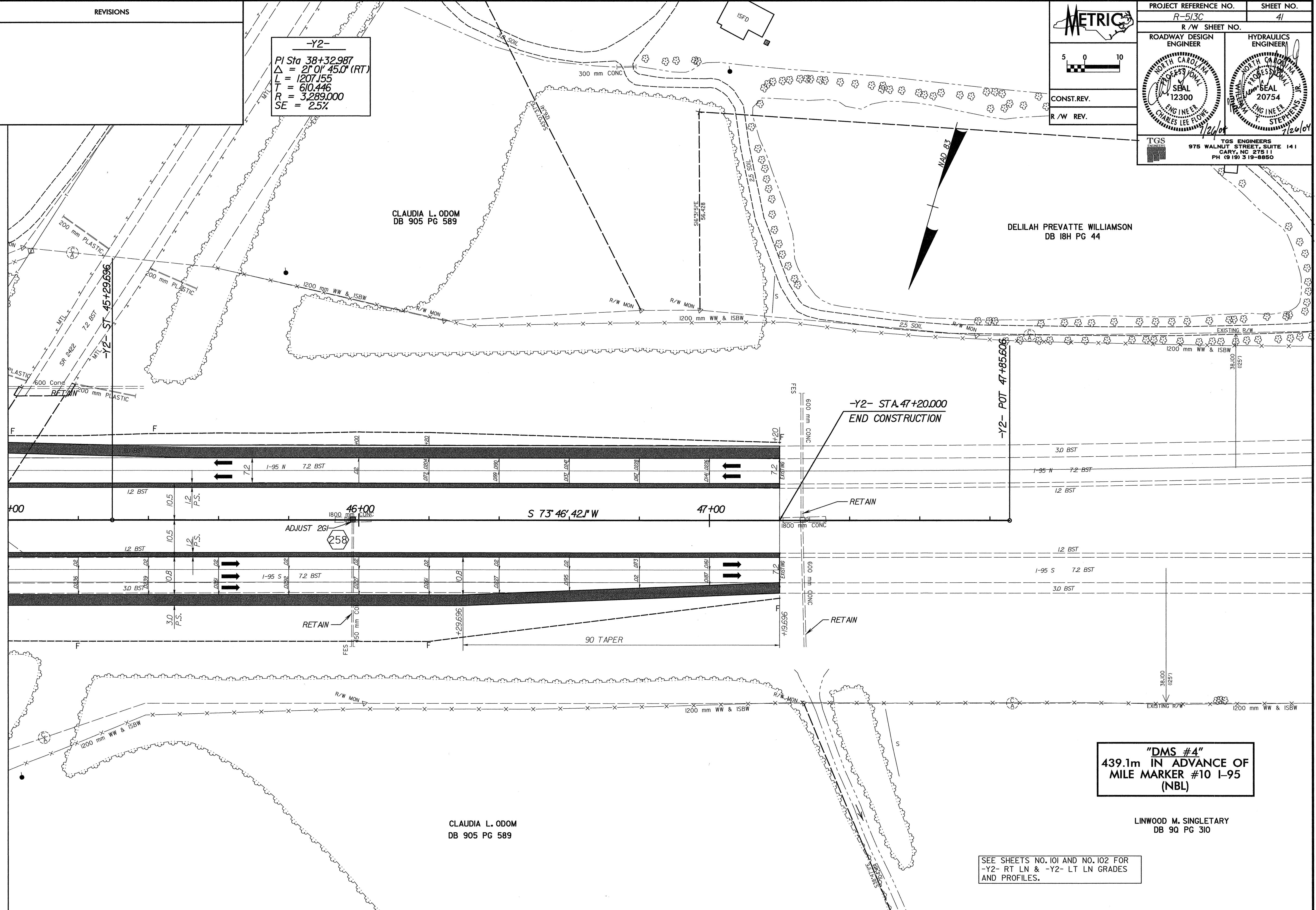
REVISIONS



PROJECT REFERENCE NO. R-513C	SHEET NO. 41
R/W SHEET NO.	
ROADWAY DESIGN ENGINEER NORTH CAROLINA PROFESSIONAL SEAL 12300 CHARLES LEE FLOWERS	HYDRAULICS ENGINEER NORTH CAROLINA PROFESSIONAL SEAL 20754 T. STEPHENS JR.
CONST. REV.	
R/W REV.	
TGS ENGINEERS 975 WALNUT STREET, SUITE 141 GARY, NC 27511 PH (919) 319-8850	

-Y2-  
 PI Sta 38+32.987  
 $\Delta = 21^{\circ}01'45.0''$  (RT)  
 L = 1207.155  
 T = 610.446  
 R = 3,289.000  
 SE = 2.5%

MATCHLINE STA. 45+00.000 MATCH TO SHT. NO. 40



"DMS #4"  
 439.1m IN ADVANCE OF  
 MILE MARKER #10 I-95  
 (NBL)

CLAUDIA L. ODOM  
 DB 905 PG 589

LINWOOD M. SINGLETARY  
 DB 90 PG 310

SEE SHEETS NO. 101 AND NO. 102 FOR  
 -Y2- RT LN & -Y2- LT LN GRADES  
 AND PROFILES.

\*\*\*\*\*  
 C:\METRIC\PROJECTS\2004\07\23\2004\_11\56\_46.IN  
 \*\*\*\*\*