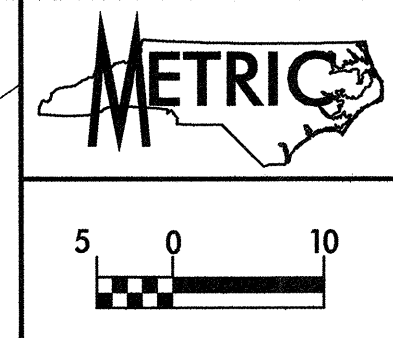


REVISIONS

-Y3-		-Y3A-		-Y3A-		-Y3A-	
PI Sta. 10+95.970	PI Sta. 11+21.318	PI Sta. 11+46.671	PI Sta. 10+25.476	PI Sta. 11+39.722	PI Sta. 13+15.261	PI Sta. 11+39.722	PI Sta. 13+15.261
$\Delta s = 1^{\circ} 54' 35.5''$	$\Delta = 0^{\circ} 40' 52.7''$ (RT)	$\Delta s = 1^{\circ} 54' 35.5''$	$\Delta = 40^{\circ} 38.2''$ (LT)	$\Delta = 68^{\circ} 25' 24.8''$ (LT)	$\Delta = 17^{\circ} 04' 25.2''$ (LT)	$\Delta = 68^{\circ} 25' 24.8''$ (LT)	$\Delta = 17^{\circ} 04' 25.2''$ (LT)
Ls = 60.000	L = 10.702	Ls = 60.000	L = 50.929	L = 59.711	L = 173.469	L = 59.711	L = 173.469
LT = 40.002	T = 5.351	LT = 40.002	T = 25.476	T = 33.995	T = 87.382	T = 33.995	T = 87.382
ST = 20.002	R = 900.000	ST = 20.002	R = 698.550	R = 50.000	R = 582.126	R = 50.000	R = 582.126
	SE = .05		SE = SEE PLANS	SE = SEE PLANS	SE = SEE PLANS	SE = SEE PLANS	SE = SEE PLANS

71	12	13	14	15	16	17	18	19	20
64	47	13	14	15	16	17	18	19	20
(US 74)	(SR 1589)	(SR 1207)	(SR 1207)	(SR 1207)	(SR 1207)	(SR 1207)	(SR 1207)	(SR 1207)	(SR 1207)
59	27	10	10	10	10	10	10	10	10
109	109	109	109	109	109	109	109	109	109
2002 ADT									
2022 ADT									
IN HUNDREDS									



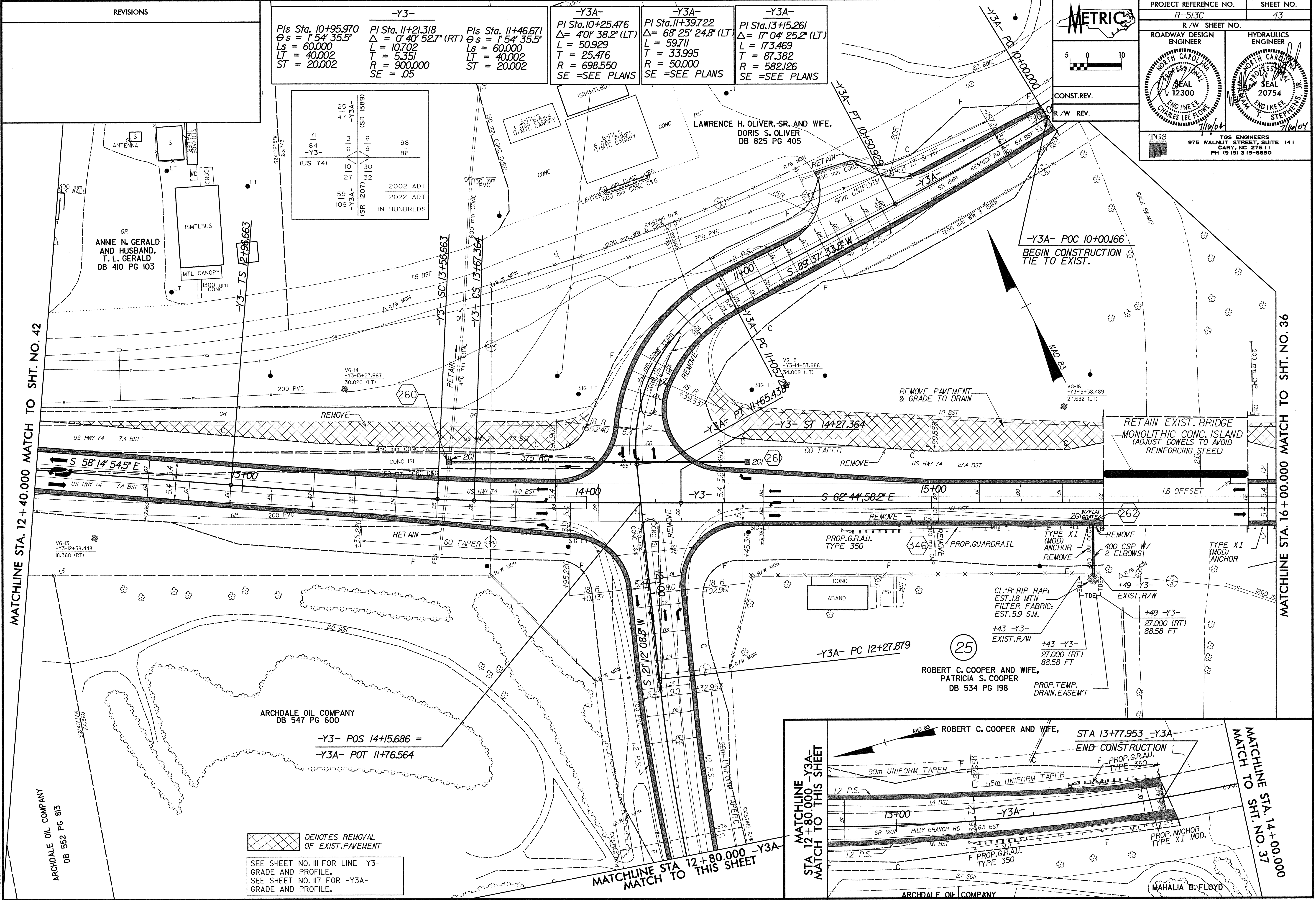
PROJECT REFERENCE NO. R-513C SHEET NO. 43

R/W SHEET NO.

ROADWAY DESIGN ENGINEER: CHARLES LEE FLOWE, SEAL 12300

HYDRAULICS ENGINEER: T. STEPHENS, SEAL 20754

TGS ENGINEERS
975 WALNUT STREET, SUITE 141
CARY, NC 27511
PH (919) 319-8850



MATCHLINE STA. 12 + 40.000 MATCH TO SHT. NO. 42

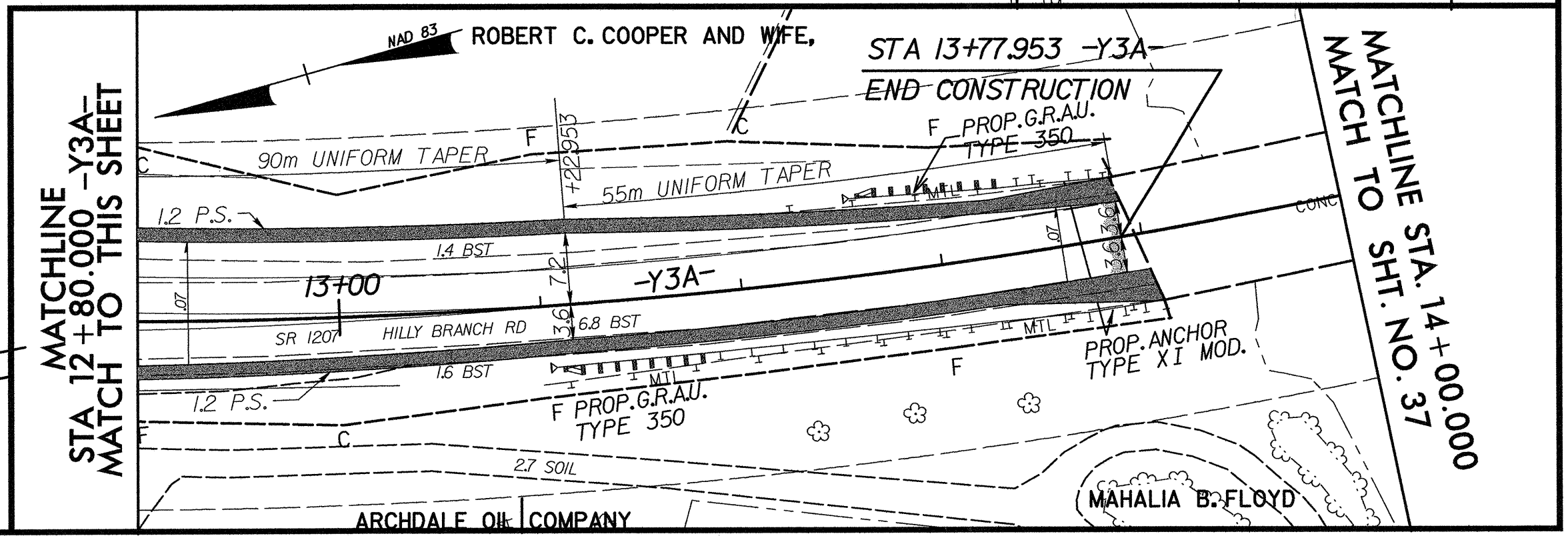
MATCHLINE STA. 16 + 00.000 MATCH TO SHT. NO. 36

ARCHDALE OIL COMPANY
DB 552 PG 813

DENOTES REMOVAL OF EXIST. PAVEMENT

SEE SHEET NO. III FOR LINE -Y3- GRADE AND PROFILE.
SEE SHEET NO. I17 FOR -Y3A- GRADE AND PROFILE.

MATCHLINE STA 12 + 80.000 -Y3A-
MATCH TO THIS SHEET



MATCHLINE STA. 14 + 00.000
MATCH TO SHT. NO. 37