

REVISIONS

-Y3B-		
PI Sta 10+49.660	PI Sta 11+85.381	PI Sta 12+57.808
$\Delta = 19^{\circ} 06' 40.2" (LT)$	$\Delta = 90^{\circ} 00' 00.0" (RT)$	$\Delta = 90^{\circ} 00' 01.1" (RT)$
L = 98.398	L = 35.908	L = 35.908
T = 49.660	T = 22.860	T = 22.860
R = 295.000	R = 22.860	R = 22.860
SE = 3%	SE = 2%	SE = 2%

-Y3-LT(I)		
PIs Sta. 20+85.375	PI Sta. 21+17.246	PIs Sta. 21+49.117
$\Theta_s = 0^{\circ} 57' 17.7"$	$\Delta = 0^{\circ} 45' 20.7" (RT)$	$\Theta_s = 0^{\circ} 57' 17.7"$
Ls = 60.000	L = 23.743	Ls = 60.000
LT = 40.001	T = 11.871	LT = 40.001
ST = 20.001	R = 1,800.000	ST = 20.001
	SE = .03	

-Y3-RT(I)
PI Sta. 21+7.000
$\Delta = 0^{\circ} 31' 12.1" (RT)$
L = 63.533
T = 31.767
R = 7,000.000
SE = NC

-Y3B-		-Y3-LT(I)	
78	5	25	100
86	8	46	124
9	3	2	1
6	9	1	2

(US 74) (SR 2500) (SR 2499) (SR 2499)

2002 ADT  
2022 ADT  
IN HUNDREDS

ALMA F. BRITT  
DB III PG 147

**METRIC**

5 0 10

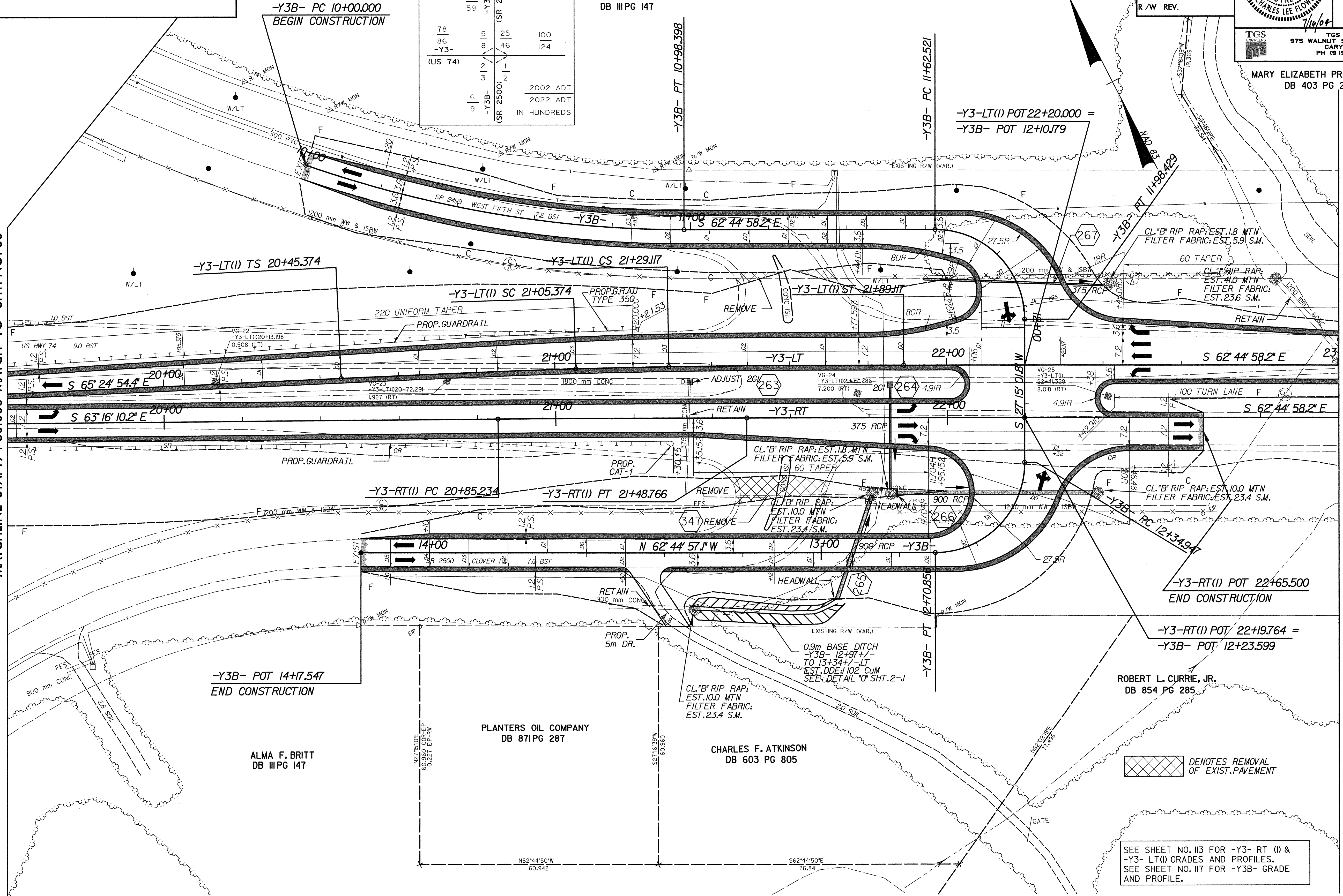
CONST. REV.  
R/W REV.

PROJECT REFERENCE NO. R-513C	SHEET NO. 44
R/W SHEET NO.	
ROADWAY DESIGN ENGINEER SEAL 12300 CHARLES LEE FLOWERS 1/16/04	HYDRAULICS ENGINEER SEAL 20754 T. STEPHENS 1/16/04
TGS ENGINEERS 975 WALNUT STREET, SUITE 141 CARY, NC 27511 PH (919) 319-8850	

MARY ELIZABETH PRICE TUBBS  
DB 403 PG 201

MATCHLINE STA. 19+60.000 MATCH TO SHT. NO. 36

MATCHLINE STA. 23+00.000 MATCH TO SHT. NO. 45



DENOTES REMOVAL OF EXIST. PAVEMENT

SEE SHEET NO. 113 FOR -Y3- RT (I) & -Y3- LT(I) GRADES AND PROFILES.  
SEE SHEET NO. 117 FOR -Y3B- GRADE AND PROFILE.

DATE PLOTTED: 07/15/2004 01:07:01 PM  
USER: JSM

DATE PLOTTED: 07/15/2004 01:07:01 PM  
USER: JSM