

REVISIONS

METRIC

5 0 10

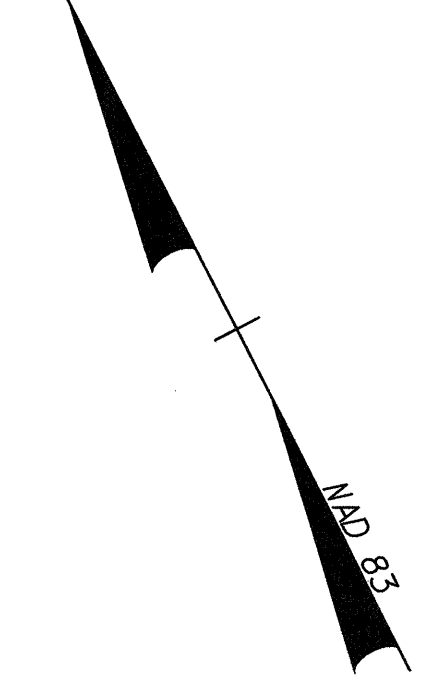
CONST. REV.

R/W REV.

PROJECT REFERENCE NO. R-513C	SHEET NO. 45
R/W SHEET NO.	
ROADWAY DESIGN ENGINEER NORTH CAROLINA SEAL 12300 CHARLES LEE FLOWERS 7/16/04	HYDRAULICS ENGINEER NORTH CAROLINA SEAL 120754 T. STEPHENS 7/16/04
TGS ENGINEERS 975 WALNUT STREET, SUITE 141 CARY, NC 27511 PH (919) 319-8850	

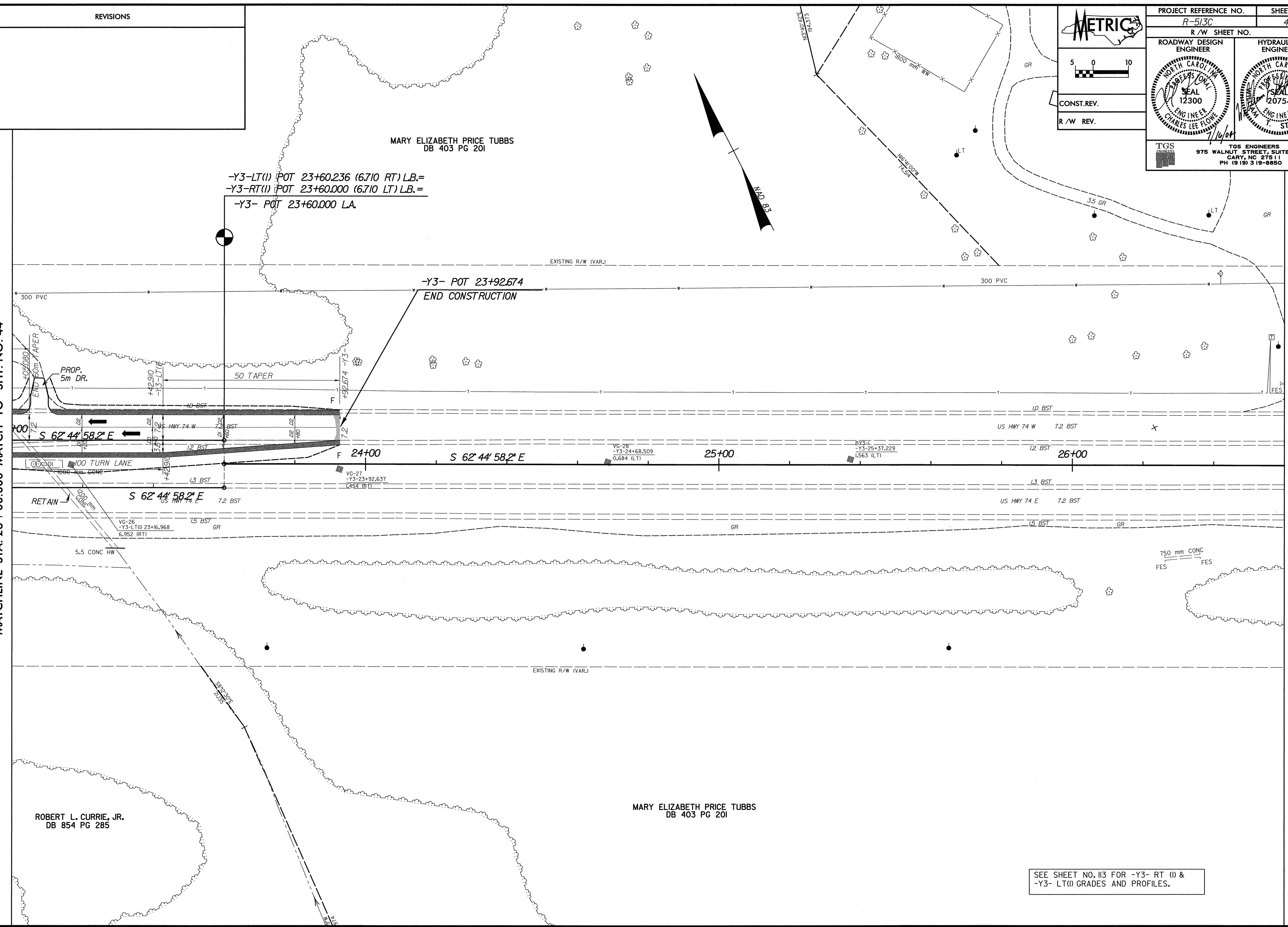
MARY ELIZABETH PRICE TUBBS  
DB 403 PG 201

-Y3-LT(I) POT 23+60.236 (6.710 RT) L.B.=  
-Y3-RT(I) POT 23+60.000 (6.710 LT) L.B.=  
-Y3- POT 23+60.000 LA.



MATCHLINE STA. 23 + 00.000 MATCH TO SHT. NO. 44

MATCHLINE STA. 26 + 60.000 MATCH TO SHT. NO. 46



ROBERT L. CURRIE, JR.  
DB 854 PG 285

MARY ELIZABETH PRICE TUBBS  
DB 403 PG 201

SEE SHEET NO. 113 FOR -Y3- RT (I) & -Y3- LT (I) GRADES AND PROFILES.

\*\*\*\*\*  
 C:\TSS\WORK\13045.PSH  
 USER NAME  
 \*\*\*\*\*