

REVISIONS

**METRIC**

PROJECT REFERENCE NO. R-513C SHEET NO. 46

R/W SHEET NO.

ROADWAY DESIGN ENGINEER: CHARLES LEE FLOWE, SEAL 12300

HYDRAULICS ENGINEER: T. STEPHENS, JR., SEAL 20754

CONST. REV.

R/W REV.

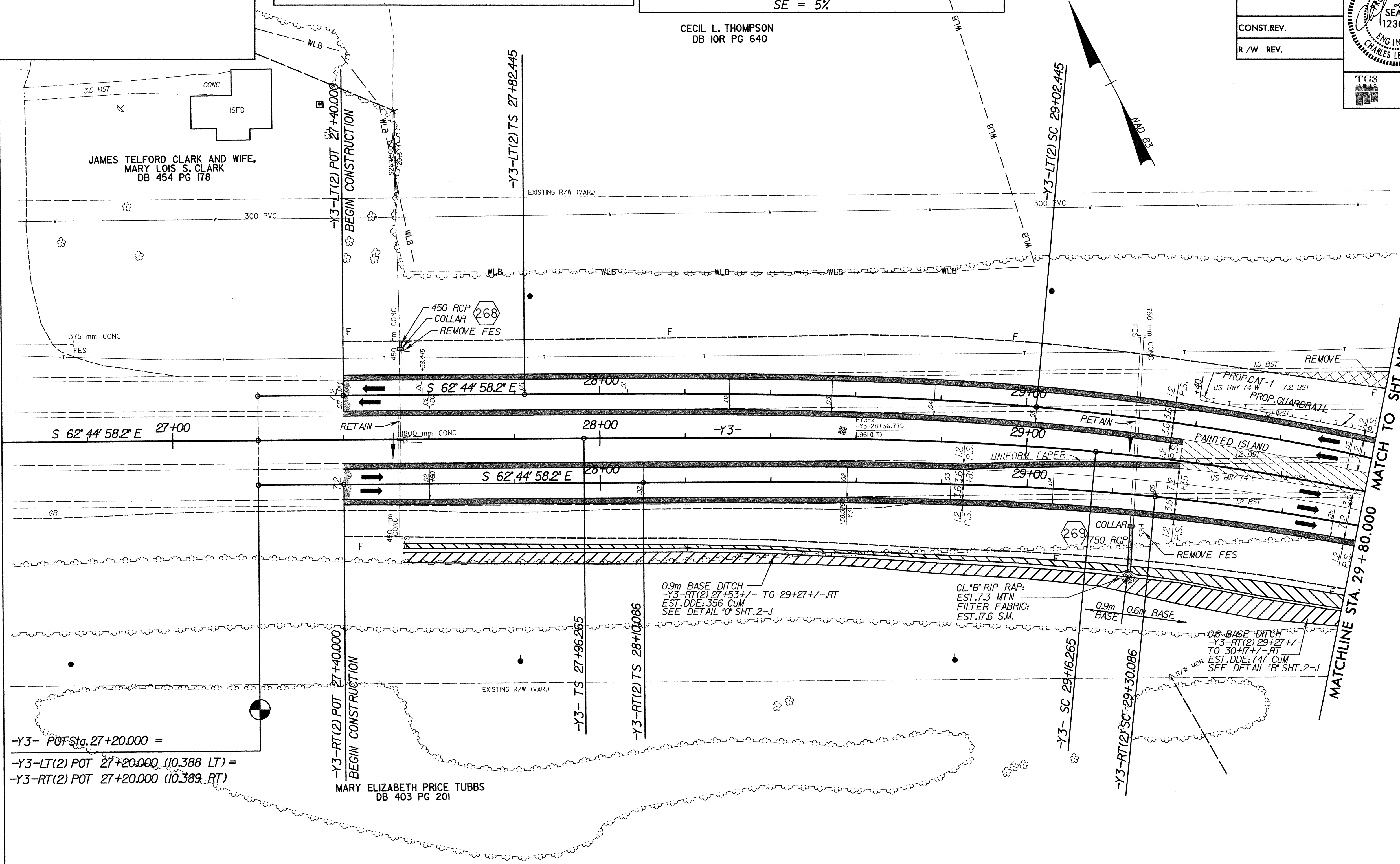
TGS ENGINEERS  
975 WALNUT STREET, SUITE 141  
CARY, NC 27511  
PH (919) 319-8850

-Y3-			-Y3- LT (2)		
Pls Sta 28+76.307	PI Sta 30+42.599	Pls Sta 32+05.334	Pls Sta 28+62.483	PI Sta 30+38.232	Pls Sta 32+09.962
$\theta s = 5^{\circ} 43' 46.5''$	$\Delta = 23^{\circ} 46' 50.6''$ (RT)	$\theta s = 5^{\circ} 43' 46.5''$	$\theta s = 5^{\circ} 27' 24.3''$	$\Delta = 24^{\circ} 19' 35.1''$ (RT)	$\theta s = 5^{\circ} 27' 24.3''$
Ls = 120.000	L = 249.031	Ls = 120.000	Ls = 120.000	L = 267.483	Ls = 120.000
LT = 80.042	T = 126.334	LT = 80.042	LT = 80.038	T = 135.787	LT = 80.038
ST = 40.038	R = 600.000	ST = 40.038	ST = 40.035	R = 630.000	ST = 40.035
			SE = 5%		

CECIL L. THOMPSON  
DB IOR PG 640

MATCHLINE STA. 26 + 60.000 MATCH TO SHT. NO. 45

MATCHLINE STA. 29 + 80.000 MATCH TO SHT. NO. 47



-Y3- POT Sta. 27+20.000 =  
-Y3-LT(2) POT 27+20.000 (10.388 LT) =  
-Y3-RT(2) POT 27+20.000 (10.389 RT)

MARY ELIZABETH PRICE TUBBS  
DB 403 PG 201

-Y3- RT (2)		
Pls Sta 28+90.133	PI Sta 30+46.975	Pls Sta 32+00.708
$\theta s = 6^{\circ} 01' 52.1''$	$\Delta = 23^{\circ} 10' 39.4''$ (RT)	$\theta s = 6^{\circ} 01' 52.1''$
Ls = 120.000	L = 230.580	Ls = 120.000
LT = 80.046	T = 116.888	LT = 80.046
ST = 40.042	R = 570.000	ST = 40.042
	SE = 5%	

SEE SHEET NO. 114 FOR LINE -Y3- RT(2) GRADE AND PROFILE.  
SEE SHEET NO. 114 FOR LINE -Y3- LT(2) GRADE AND PROFILE.

6/10/08  
 TGS ENGINEERS  
 975 WALNUT STREET, SUITE 141  
 CARY, NC 27511  
 PH (919) 319-8850

07/15/2004 01:05:04 PM  
 P:\151346.PH