

**METRIC**

PROJECT REFERENCE NO. R-513C SHEET NO. 47

R/W SHEET NO.

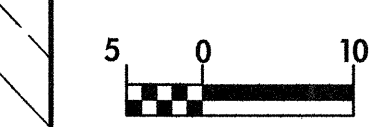
ROADWAY DESIGN ENGINEER: NORTH CAROLINA PROFESSIONAL SEAL 12300

HYDRAULICS ENGINEER: NORTH CAROLINA PROFESSIONAL SEAL 20754

CONST. REV.

R/W REV.

TGS ENGINEERS  
975 WALNUT STREET, SUITE 141  
CARY, NC 27511  
PH (919) 319-8850



▨ DENOTES REMOVAL OF EXIST. PAVEMENT

SEE SHEET NO. 131 FOR LINE -Y9- GRADE AND PROFILE.  
SEE SHEET NO. 135 FOR LINE -Y9A- GRADE AND PROFILE.  
SEE SHEET NO. 115 FOR LINE -Y3-RT(2) GRADE AND PROFILE.  
SEE SHEET NO. 115 FOR LINE -Y3-LT(2) GRADE AND PROFILE.

	-Y9-	(SR 2416)
-Y3-	23	37
(US 74)	40	55
	1	2
	2	5
		2002 ADT
		2022 ADT
		IN HUNDREDS

**-Y9-**

Pls Sta 1+78.975	Pls Sta 2+57.459
$\theta s = 8^{\circ} 57' 08.9''$	$\Delta = 42^{\circ} 16' 31.6''$ (LT)
Ls = 50.000	L = 118.055
LT = 33.376	T = 61.860
ST = 16.706	R = 160.000
	SE = 4%

**-Y9-**

Pls Sta 3+86.475	Pls Sta 4+38.469
$\Delta = 49^{\circ} 23' 03.0''$ (RT)	$\theta s = 17^{\circ} 54' 17.8''$
L = 68.953	Ls = 50.000
T = 36.783	LT = 33.505
R = 80.000	ST = 16.823
SE = AS SHOWN	

**-Y3-**

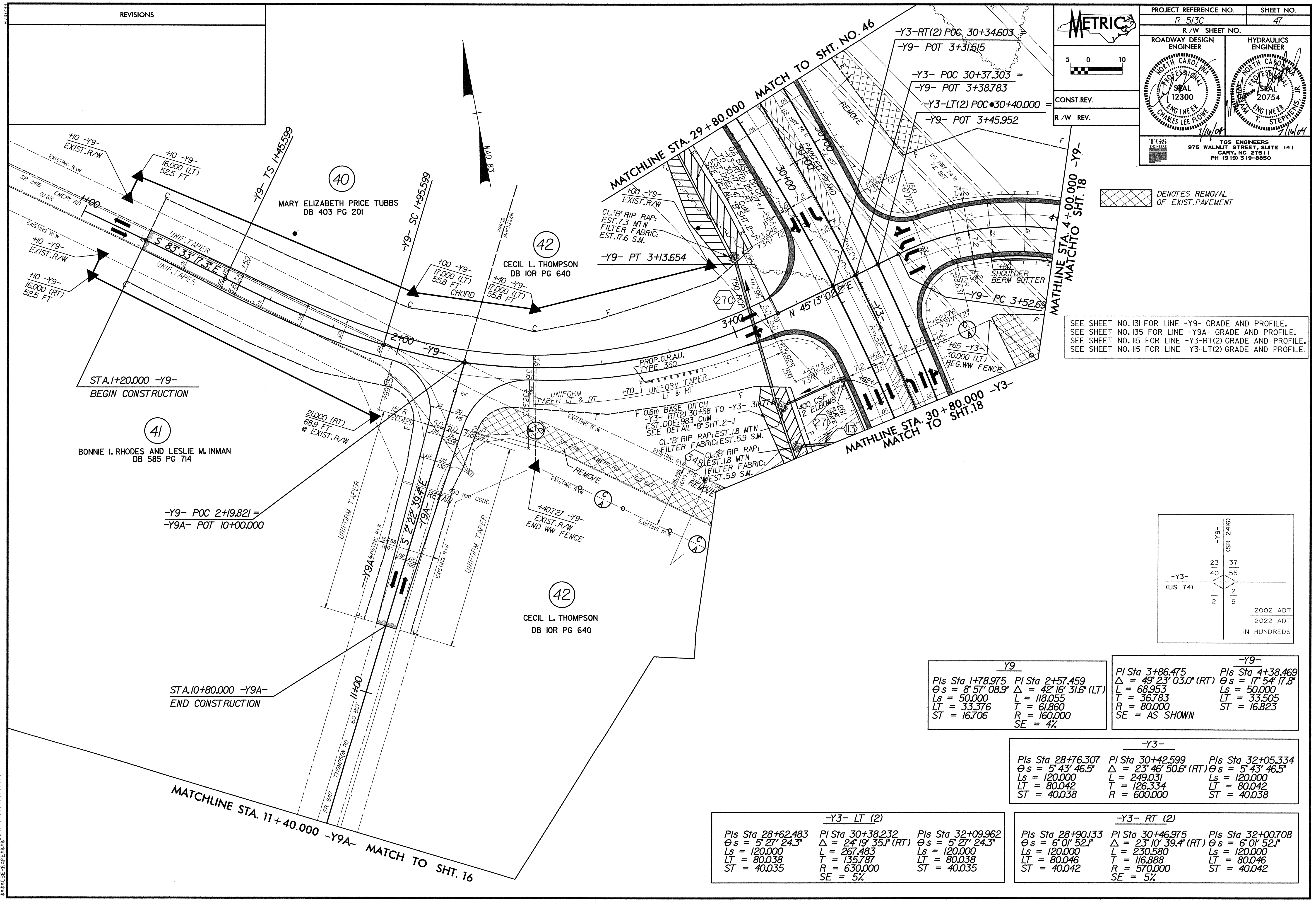
Pls Sta 28+76.307	Pls Sta 30+42.599	Pls Sta 32+05.334
$\theta s = 5^{\circ} 43' 46.5''$	$\Delta = 23^{\circ} 46' 50.6''$ (RT)	$\theta s = 5^{\circ} 43' 46.5''$
Ls = 120.000	L = 249.031	Ls = 120.000
LT = 80.042	T = 126.334	LT = 80.042
ST = 40.038	R = 600.000	ST = 40.038

**-Y3- LT (2)**

Pls Sta 28+62.483	Pls Sta 30+38.232	Pls Sta 32+09.962
$\theta s = 5^{\circ} 27' 24.3''$	$\Delta = 24^{\circ} 19' 35.1''$ (RT)	$\theta s = 5^{\circ} 27' 24.3''$
Ls = 120.000	L = 267.483	Ls = 120.000
LT = 80.038	T = 135.787	LT = 80.038
ST = 40.035	R = 630.000	ST = 40.035
	SE = 5%	

**-Y3- RT (2)**

Pls Sta 28+90.133	Pls Sta 30+46.975	Pls Sta 32+00.708
$\theta s = 6^{\circ} 01' 52.1''$	$\Delta = 23^{\circ} 10' 39.4''$ (RT)	$\theta s = 6^{\circ} 01' 52.1''$
Ls = 120.000	L = 230.580	Ls = 120.000
LT = 80.046	T = 116.888	LT = 80.046
ST = 40.042	R = 570.000	ST = 40.042
	SE = 5%	



STA. 1+20.000 -Y9-  
BEGIN CONSTRUCTION

41  
BONNIE I. RHODES AND LESLIE M. INMAN  
DB 585 PG 714

STA. 10+80.000 -Y9A-  
END CONSTRUCTION

MATCHLINE STA. 11+40.000 -Y9A-  
MATCH TO SHT. 16

MATCHLINE STA. 29+80.000 MATCH TO SHT. NO. 46

MATCHLINE STA. 30+80.000 -Y3-  
MATCH TO SHT. 18

MATCHLINE STA. 4+00.000 -Y9-  
MATCH TO SHT. 18

\*\*\*\*\*SYTIME\*\*\*\*\*