

REVISIONS

METRIC

PROJECT REFERENCE NO. R-513C SHEET NO. 48

R/W SHEET NO.

ROADWAY DESIGN ENGINEER: CHARLES LEE FLOWERS

HYDRAULICS ENGINEER: T. STEPHENS

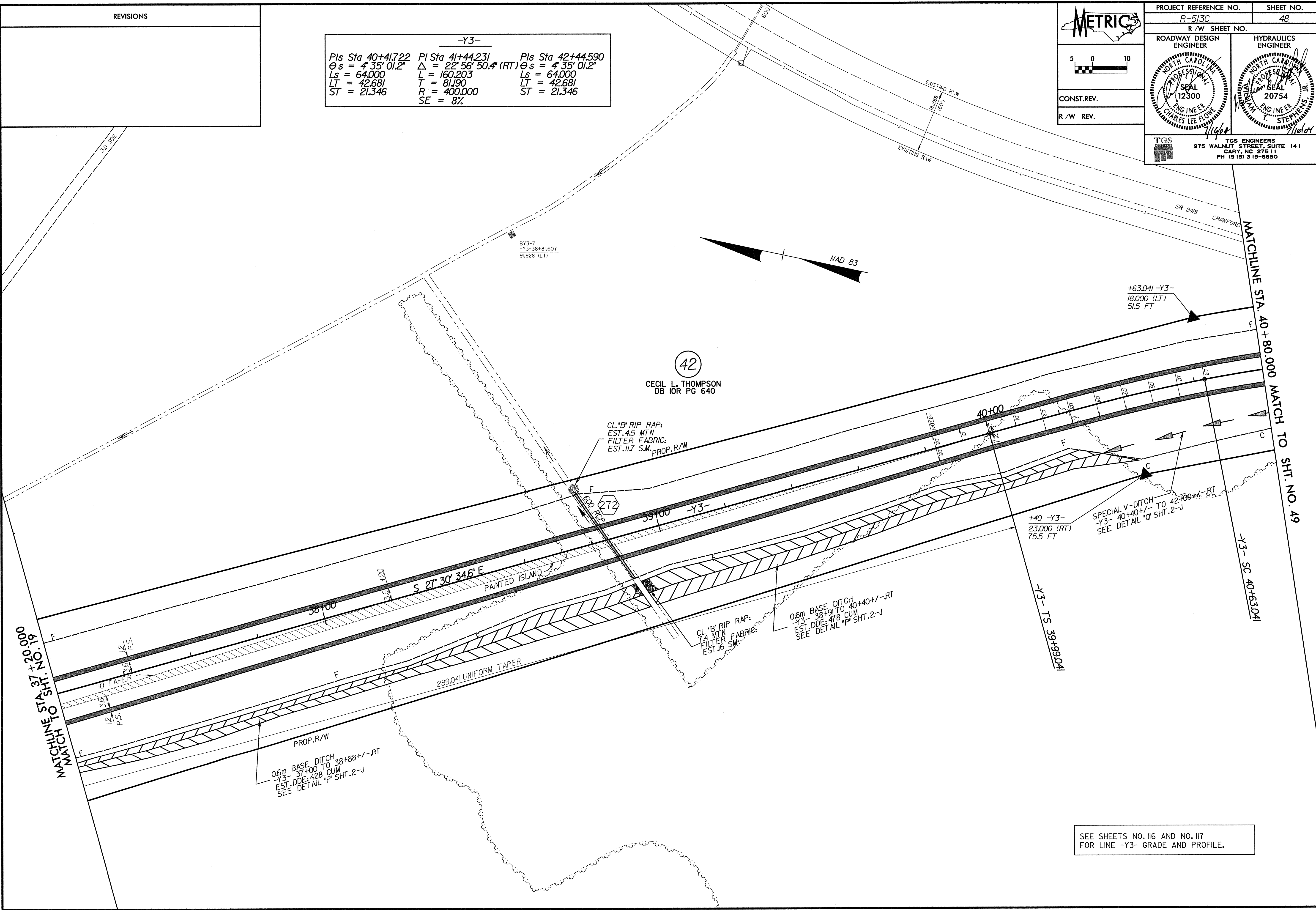
CONST. REV.

R/W REV.

TGS ENGINEERS
975 WALNUT STREET, SUITE 141
CARY, NC 27511
PH (919) 319-8850

-Y3-

Pls Sta 40+41.722	PI Sta 41+44.231	Pls Sta 42+44.590
$\theta_s = 4' 35'' 01.2''$	$\Delta = 22' 56'' 50.4''$ (RT)	$\theta_s = 4' 35'' 01.2''$
$L_s = 64.000$	$L = 160.203$	$L_s = 64.000$
$LT = 42.681$	$T = 81.190$	$LT = 42.681$
$ST = 21.346$	$R = 400.000$	$ST = 21.346$
	$SE = 8\%$	



MATCHLINE STA. 37+200.00
MATCH TO SHT. NO. 19

MATCHLINE STA. 40+80.00
MATCH TO SHT. NO. 49

42
CECIL L. THOMPSON
DB IOR PG 640

0.6m BASE DITCH
-Y3- 37+400 TO 38+88+/-RT
EST. DDE: 428 CUM
SEE DETAIL 'P' SHT. 2-J

CL 'B' RIP RAP:
EST. 4.5 MTN
FILTER FABRIC:
EST. 11.7 S.M. PROP. R/W

CL 'B' RIP RAP:
7.4 MTN
FILTER FABRIC:
EST. 16 S.M.

0.6m BASE DITCH
-Y3- 38+91 TO 40+40+/-RT
EST. DDE: 478 CUM
SEE DETAIL 'P' SHT. 2-J

+40 -Y3-
23.000 (RT)
75.5 FT

SPECIAL V-DITCH
-Y3- 40+40+/- TO 42+00+/-RT
SEE DETAIL 'Q' SHT. 2-J

+63.041 -Y3-
18.000 (LT)
51.5 FT

SEE SHEETS NO. 116 AND NO. 117
FOR LINE -Y3- GRADE AND PROFILE.

DATE: 07/15/2004 12:06:55 PM

DATE: 07/15/2004 12:06:55 PM