

REVISIONS

METRIC

PROJECT REFERENCE NO. R-513C SHEET NO. 51

R/W SHEET NO.

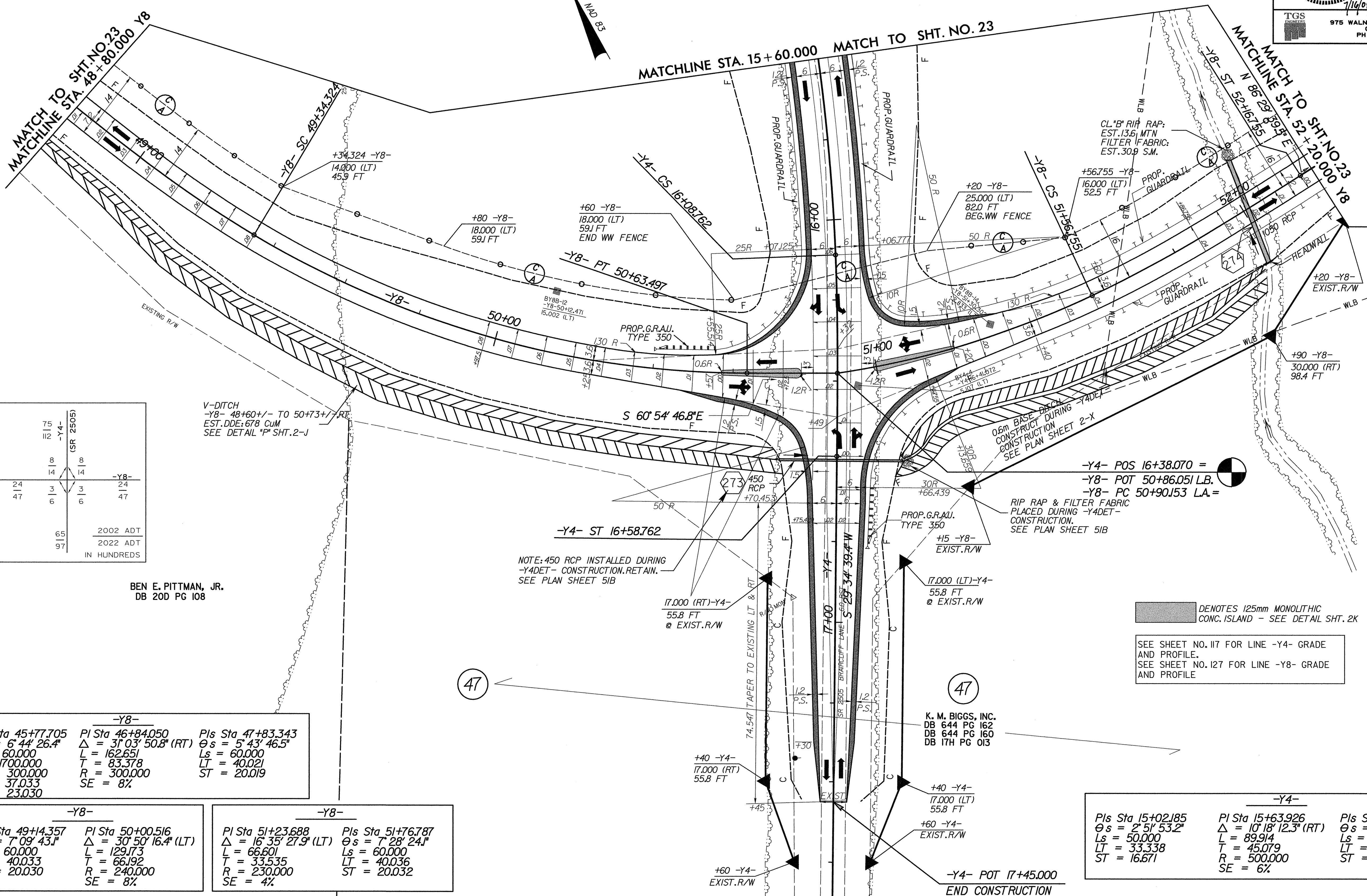
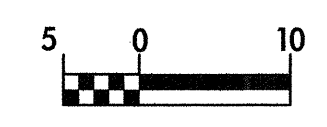
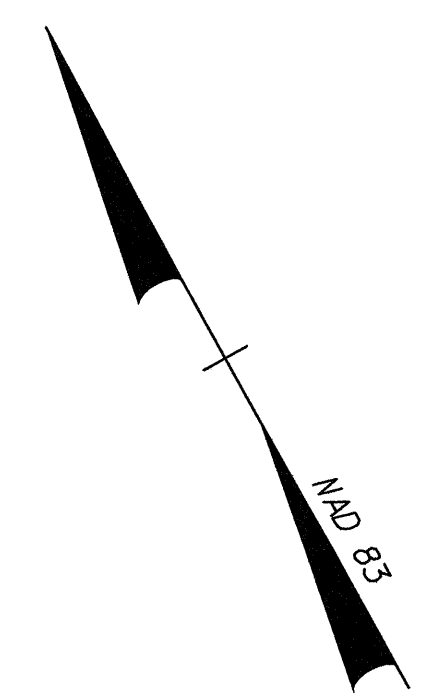
ROADWAY DESIGN ENGINEER
NORTH CAROLINA SEAL 12300
CHARLES LEE FLOWERS

HYDRAULICS ENGINEER
NORTH CAROLINA SEAL 20754
T. STEPHENS

CONST. REV.

R/W REV.

TGS ENGINEERS
975 WALNUT STREET, SUITE 141
CARY, NC 27511
PH (919) 319-8850



V-DITCH
-Y8- 48+60+/- TO 50+73+/- RT
EST. DDE: 678 CUM
SEE DETAIL 'P' SHT. 2-J

BEN E. PITTMAN, JR.
DB 200 PG 108

NOTE: 450 RCP INSTALLED DURING
-Y4DET- CONSTRUCTION. RETAIN.
SEE PLAN SHEET 51B

DENOTES 125mm MONOLITHIC
CONC. ISLAND - SEE DETAIL SHT. 2K

SEE SHEET NO. 117 FOR LINE -Y4- GRADE
AND PROFILE.
SEE SHEET NO. 127 FOR LINE -Y8- GRADE
AND PROFILE

-Y8-		
Pls Sta 45+77.705	PI Sta 46+84.050	Pls Sta 47+83.343
$\theta s = 6' 44' 26.4''$	$\Delta = 31' 03' 50.8''$ (RT)	$\theta s = 5' 43' 46.5''$
$Ls = 60,000$	$L = 162,651$	$Ls = 60,000$
$R1 = 1700,000$	$T = 83,378$	$LT = 40,021$
$R2 = 300,000$	$R = 300,000$	$ST = 20,019$
$LT = 37,033$	$SE = 8\%$	
$ST = 23,030$		

-Y8-	
Pls Sta 49+14.357	PI Sta 50+00.516
$\theta s = 7' 09' 43.1''$	$\Delta = 30' 50' 16.4''$ (LT)
$Ls = 60,000$	$L = 129,173$
$LT = 40,033$	$T = 66,192$
$ST = 20,030$	$R = 240,000$
	$SE = 8\%$

-Y8-	
PI Sta 51+23.688	Pls Sta 51+76.787
$\Delta = 16' 35' 27.9''$ (LT)	$\theta s = 7' 28' 24.1''$
$L = 66,601$	$Ls = 60,000$
$T = 33,535$	$LT = 40,036$
$R = 230,000$	$ST = 20,032$
$SE = 4\%$	

-Y4-		
Pls Sta 15+02.185	PI Sta 15+63.926	Pls Sta 16+25.432
$\theta s = 2' 51' 53.2''$	$\Delta = 10' 18' 12.3''$ (RT)	$\theta s = 2' 51' 53.2''$
$Ls = 50,000$	$L = 89,914$	$Ls = 50,000$
$LT = 33,338$	$T = 45,079$	$LT = 33,338$
$ST = 16.671$	$R = 500,000$	$ST = 16.671$
	$SE = 6\%$	