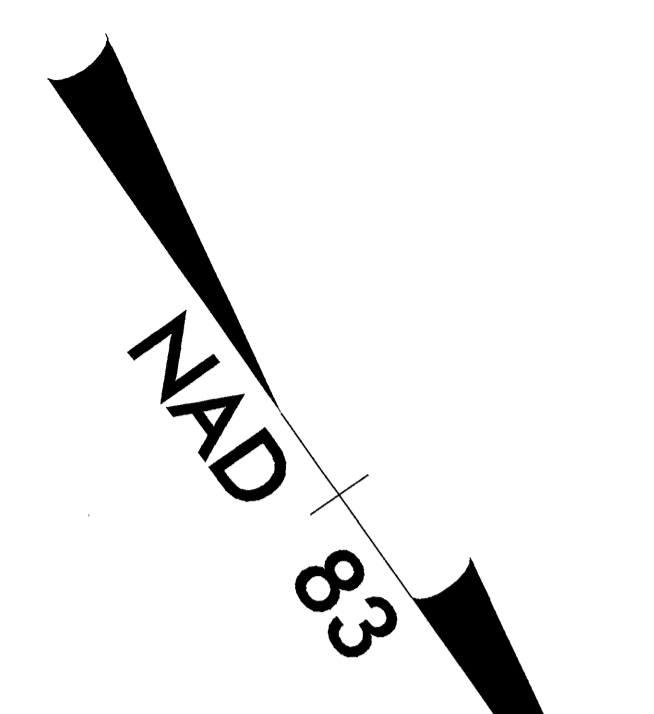
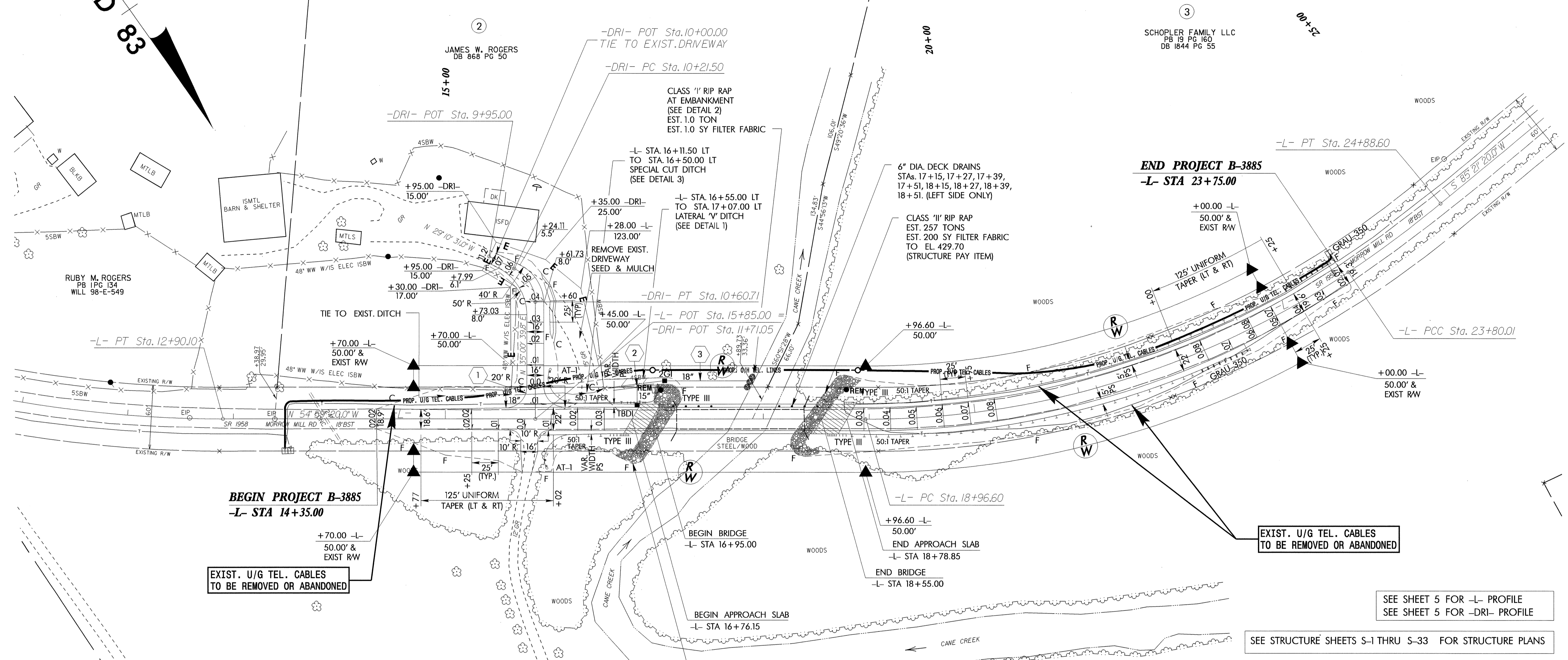


UTILITIES BY OTHERS

**NOTE:**  
ALL PROPOSED UTILITY WORK SHOWN ON THIS SHEET WILL BE DONE BY OTHERS



-L-		-DRI-	
PI Sta 11+45.84	PI Sta 21+45.66	PI Sta 24+34.35	PI Sta 10+43.45
$\Delta = 14^{\circ} 39' 00.0''$ (LT)	$\Delta = 34^{\circ} 00' 00.0''$ (LT)	$\Delta = 5^{\circ} 39' 20.0''$ (LT)	$\Delta = 64^{\circ} 11' 10.9''$ (RT)
D = 5' 03.00.0'	D = 7' 02.00.0'	D = 5' 12' 30.0'	D = 163' 42' 08.0'
L = 290.10'	L = 483.41'	L = 108.59'	L = 39.21'
T = 145.84'	T = 249.06'	T = 54.34'	T = 21.95'
R = 1,134.57'	R = 814.63'	R = 1,100.08'	R = 35.00'
	SE = 0.08 FT/FT		SE = AS SHOWN



**BEGIN PROJECT B-3885**  
-L- STA 14+35.00

**END PROJECT B-3885**  
-L- STA 23+75.00

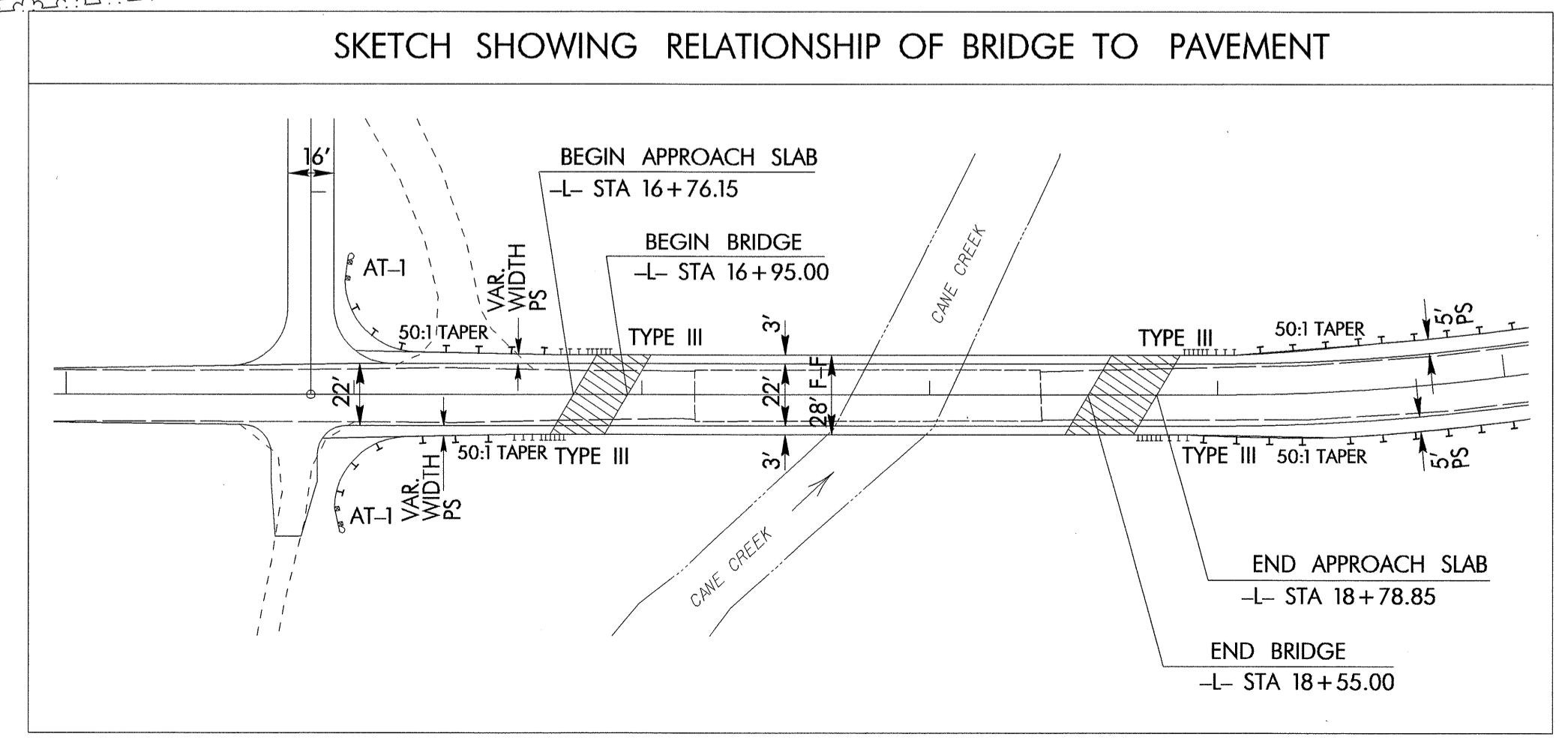
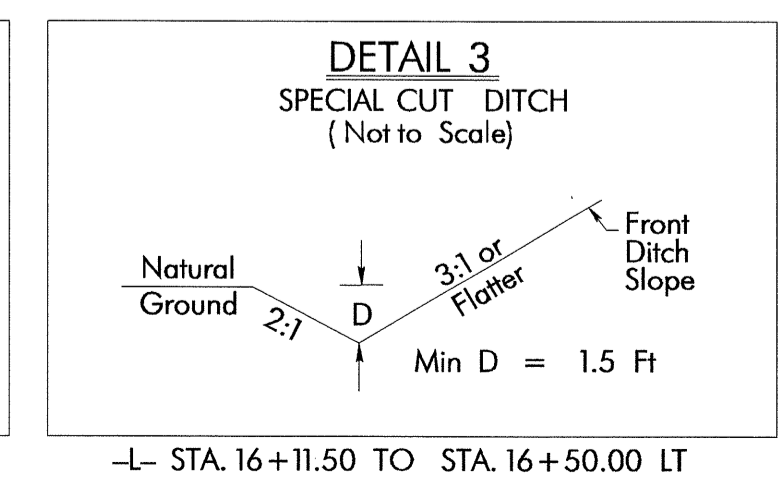
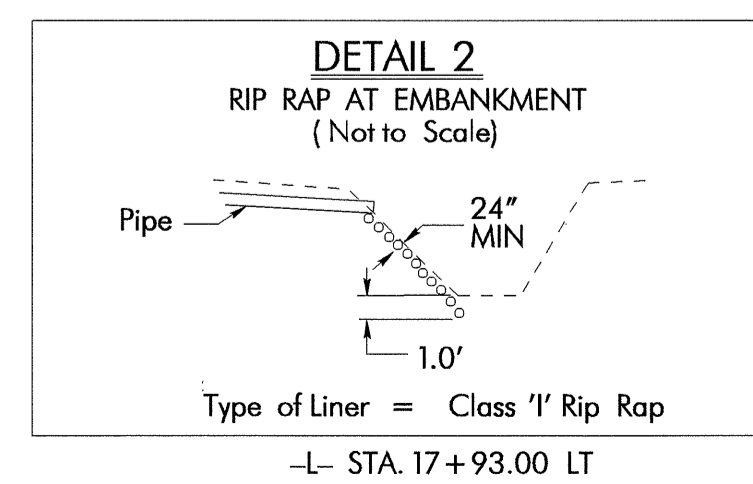
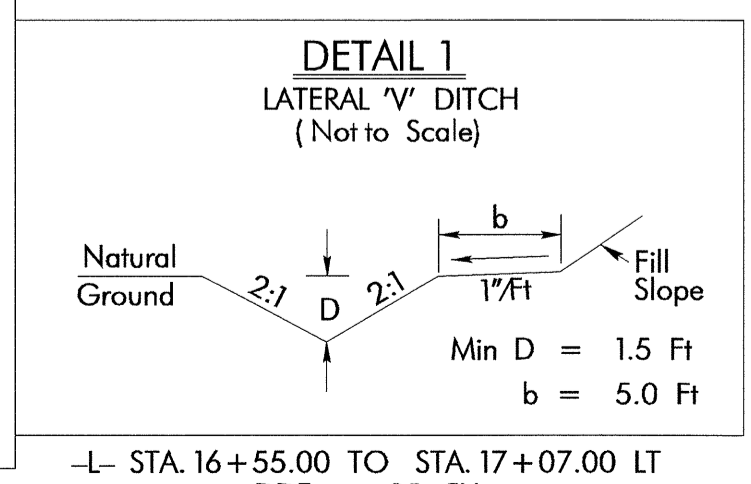
EXIST. U/G TEL. CABLES TO BE REMOVED OR ABANDONED

EXIST. U/G TEL. CABLES TO BE REMOVED OR ABANDONED

SEE SHEET 5 FOR -L- PROFILE  
SEE SHEET 5 FOR -DRI- PROFILE

SEE STRUCTURE SHEETS S-1 THRU S-33 FOR STRUCTURE PLANS

**DATUM DESCRIPTION**  
THE LOCALIZED COORDINATE SYSTEM DEVELOPED FOR THIS PROJECT IS BASED ON THE STATE PLANE COORDINATES ESTABLISHED BY NCDOT FOR MONUMENT "B3885-1" WITH NAD 83 STATE PLANE GRID COORDINATES OF NORTHING: 792450.4032 (ft) EASTING: 1924115.0260 (ft) THE AVERAGE COMBINED GRID FACTOR USED ON THIS PROJECT (GROUND TO GRID) IS: 0.99992943 THE N.C. LAMBERT GRID BEARING AND LOCALIZED HORIZONTAL GROUND DISTANCE FROM "B3885-1" TO -L- Sta 14+35.00 IS N 56° 01' 47.1" W DIST. 402.417 (ft) ALL LINEAR DIMENSIONS ARE LOCALIZED HORIZONTAL DISTANCES VERTICAL DATUM USED IS NAVD 88



8/17/99  
27-JUL-2004 11:44  
R:\Utilities\Bdy...  
AT DS214533  
Ut:\Projects\B3885\4\_UO2\_ut.psh.dgn  
doug.louder