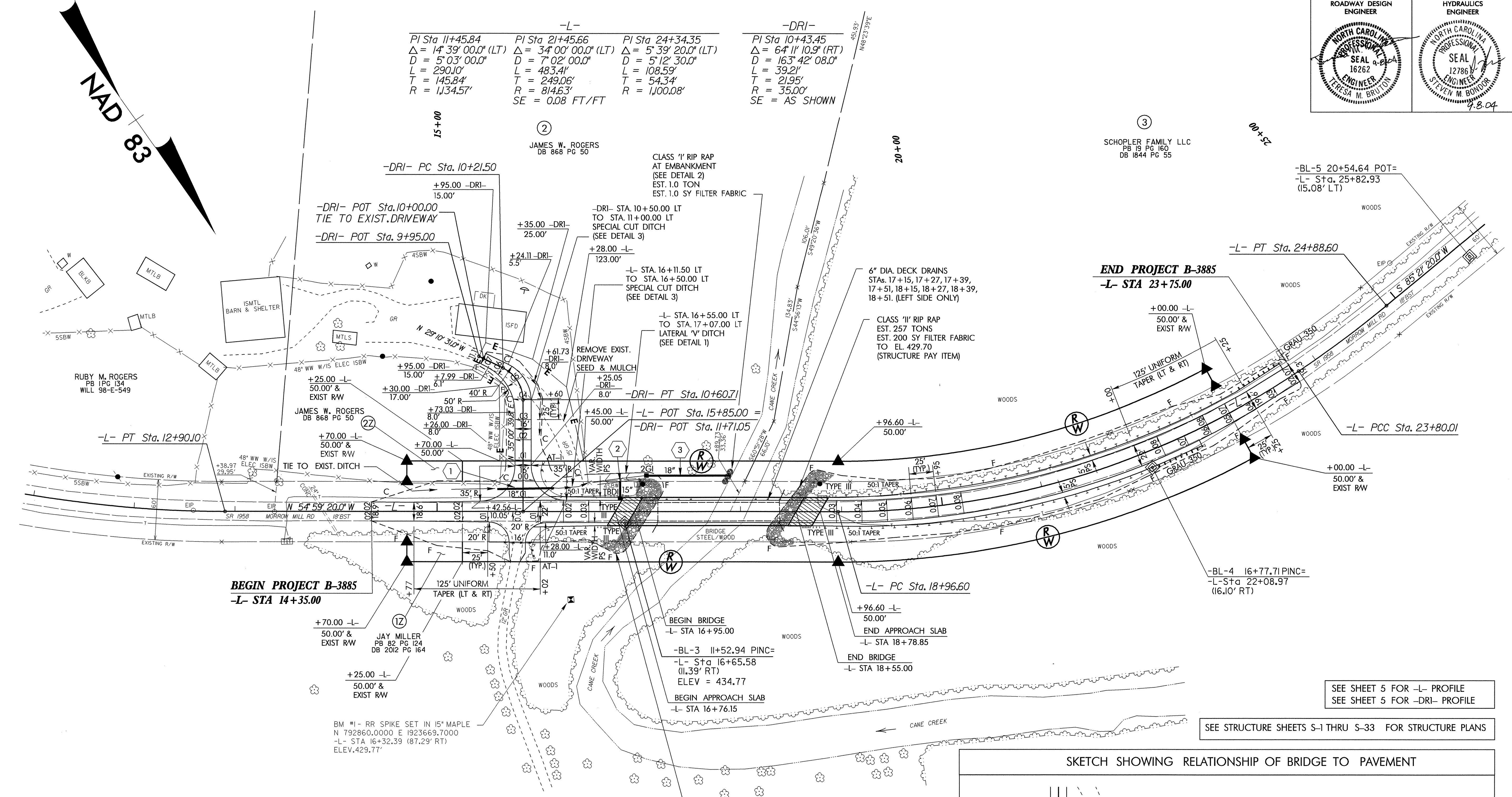


-L-			-DRI-	
PI Sta 11+45.84	PI Sta 21+45.66	PI Sta 24+34.35	PI Sta 10+43.45	
$\Delta = 14^{\circ} 39' 00.0''$ (LT)	$\Delta = 34^{\circ} 00' 00.0''$ (LT)	$\Delta = 5^{\circ} 39' 20.0''$ (LT)	$\Delta = 64^{\circ} 11' 10.9''$ (RT)	
D = 5' 03" 00.0"	D = 7' 02" 00.0"	D = 5' 12" 30.0"	D = 163' 42" 08.0"	
L = 290.10'	L = 483.41'	L = 108.59'	L = 39.21'	
T = 145.84'	T = 249.06'	T = 54.34'	T = 21.95'	
R = 1134.57'	R = 814.63'	R = 1100.08'	R = 35.00'	
	SE = 0.08 FT/FT		SE = AS SHOWN	



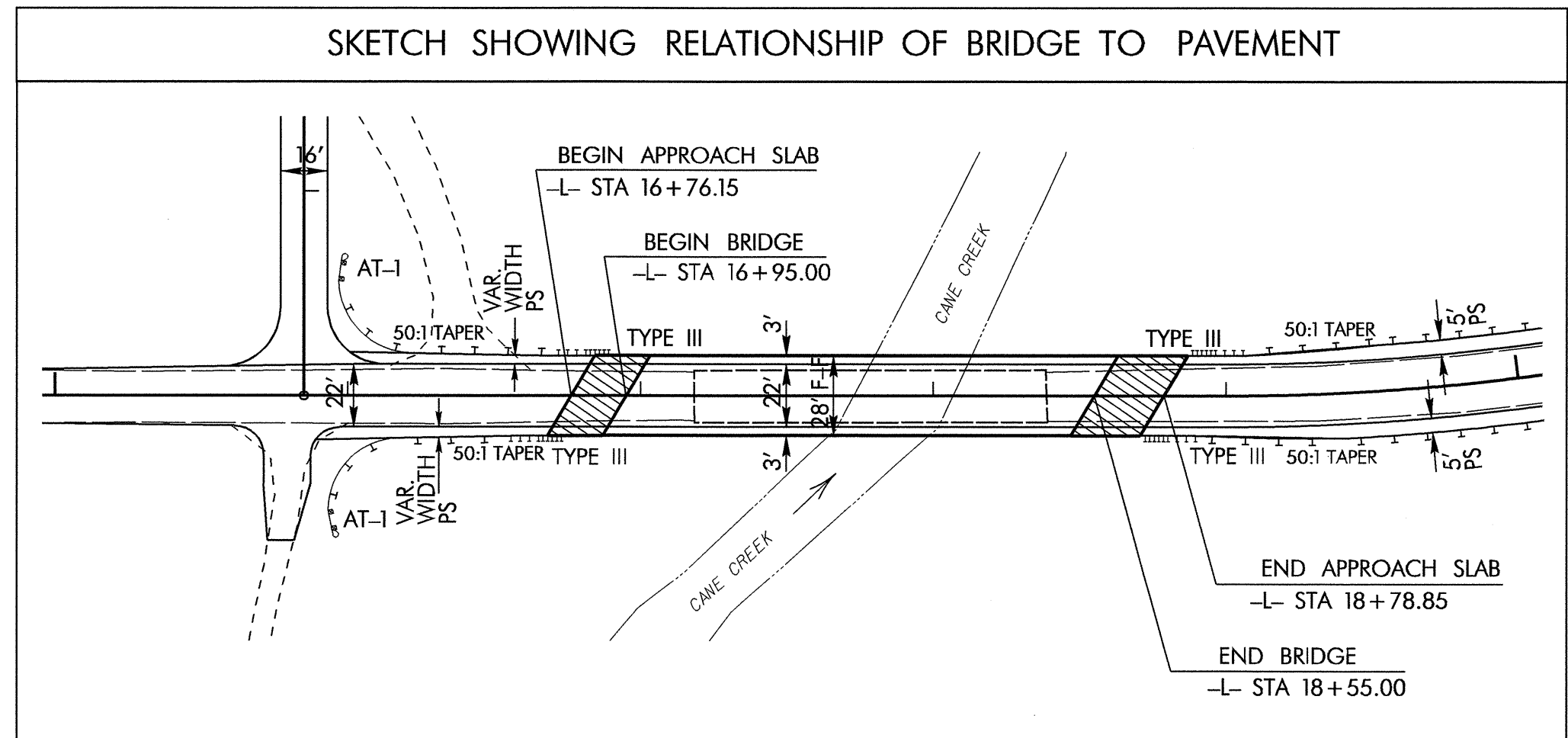
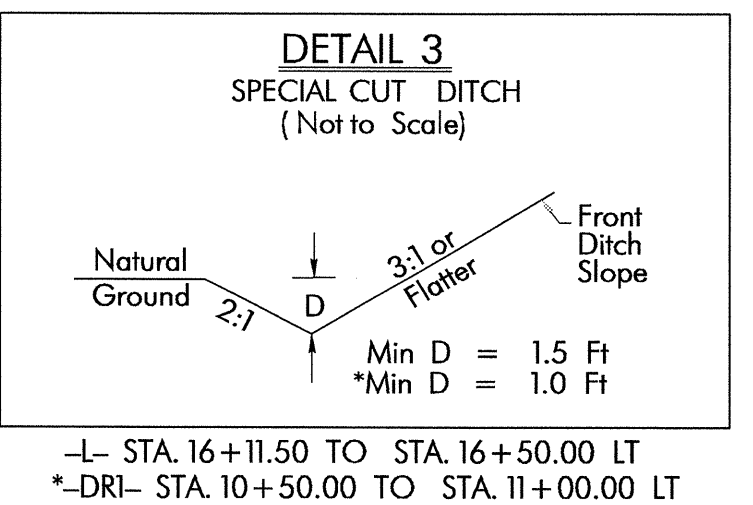
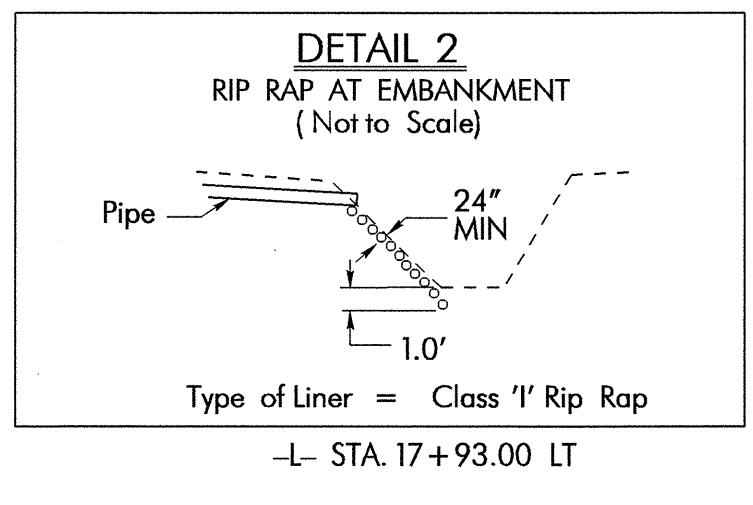
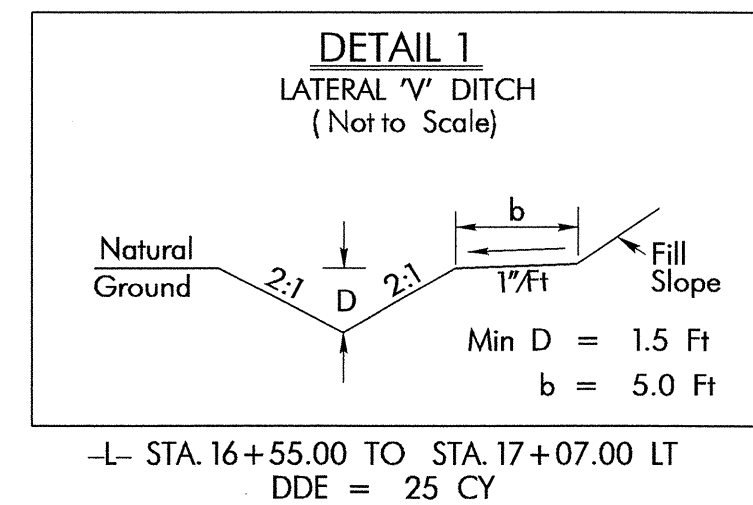
**BEGIN PROJECT B-3885**  
-L- STA 14+35.00

**END PROJECT B-3885**  
-L- STA 23+75.00

SEE SHEET 5 FOR -L- PROFILE  
SEE SHEET 5 FOR -DRI- PROFILE

SEE STRUCTURE SHEETS S-1 THRU S-33 FOR STRUCTURE PLANS

**DATUM DESCRIPTION**  
THE LOCALIZED COORDINATE SYSTEM DEVELOPED FOR THIS PROJECT IS BASED ON THE STATE PLANE COORDINATES ESTABLISHED BY NCDOT FOR MONUMENT "B3885-1" WITH NAD 83 STATE PLANE GRID COORDINATES OF NORTHING: 792450.4032 (ft) EASTING: 1924115.0260 (ft) THE AVERAGE COMBINED GRID FACTOR USED ON THIS PROJECT (GROUND TO GRID) IS: 0.99992943 THE N.C. LAMBERT GRID BEARING AND LOCALIZED HORIZONTAL GROUND DISTANCE FROM "B3885-1" TO -L- Sta 14+35.00 IS N 56° 01' 47.1" W DIST. 402.417 (ft) ALL LINEAR DIMENSIONS ARE LOCALIZED HORIZONTAL DISTANCES VERTICAL DATUM USED IS NAVD 88



REVISIONS

8/17/99

08-SEP-2004 10:37 AM  
R:\Projects\B3885\04-psh  
k.mollan