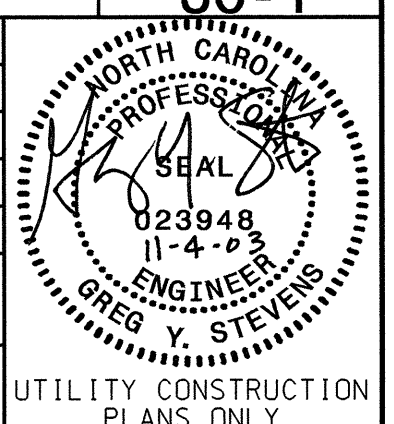


PROJECT REFERENCE NO.	SHEET NO.
R-2514A	UC-1
DESIGNED BY: ARK	
DRAWN BY: ARK	
CHECKED BY: GYS	
APPROVED BY: GYS	
REVISED:	
NORTH CAROLINA DEPARTMENT OF TRANSPORTATION	
DESIGN SERVICES UNIT PHONE: (919)250-4128 FAX: (919)250-4119	
UTILITY CONSTRUCTION PLANS ONLY	



UTILITY CONSTRUCTION

PROP. 88M OF 200MM DI WATER PIPE, PC 2.41MPA WP
 2-200MM 45° DI BEND
 2-200MM 22 1/2° DI BEND
 1-200MM X 200MM DI CROSS
 1-200MM GATE VALVE AND VALVE BOX, 1.38 MPA WP
 MAKE CONNECTION USING THE NECESSARY FITTINGS

PROP. 3.25M OF 20MM PE WATER TUBING,
 SDR 9, 1.38 MPA WP
 1-200MM X 20MM TAPPING SADDLE
 1-20MM CORPORATION STOP
 MAKE CONNECTION USING THE NECESSARY FITTINGS

PROP. 2.5M OF 150MM DI WATER PIPE, PC 2.41 MPA WP
 1- 200MM X 150MM DI TEE
 1-150MM GATE VALVE AND VALVE BOX, 1.38 MPA WP
 1-RELOCATE EXISTING FIRE HYDRANT
 MAKE CONNECTION USING THE NECESSARY FITTINGS

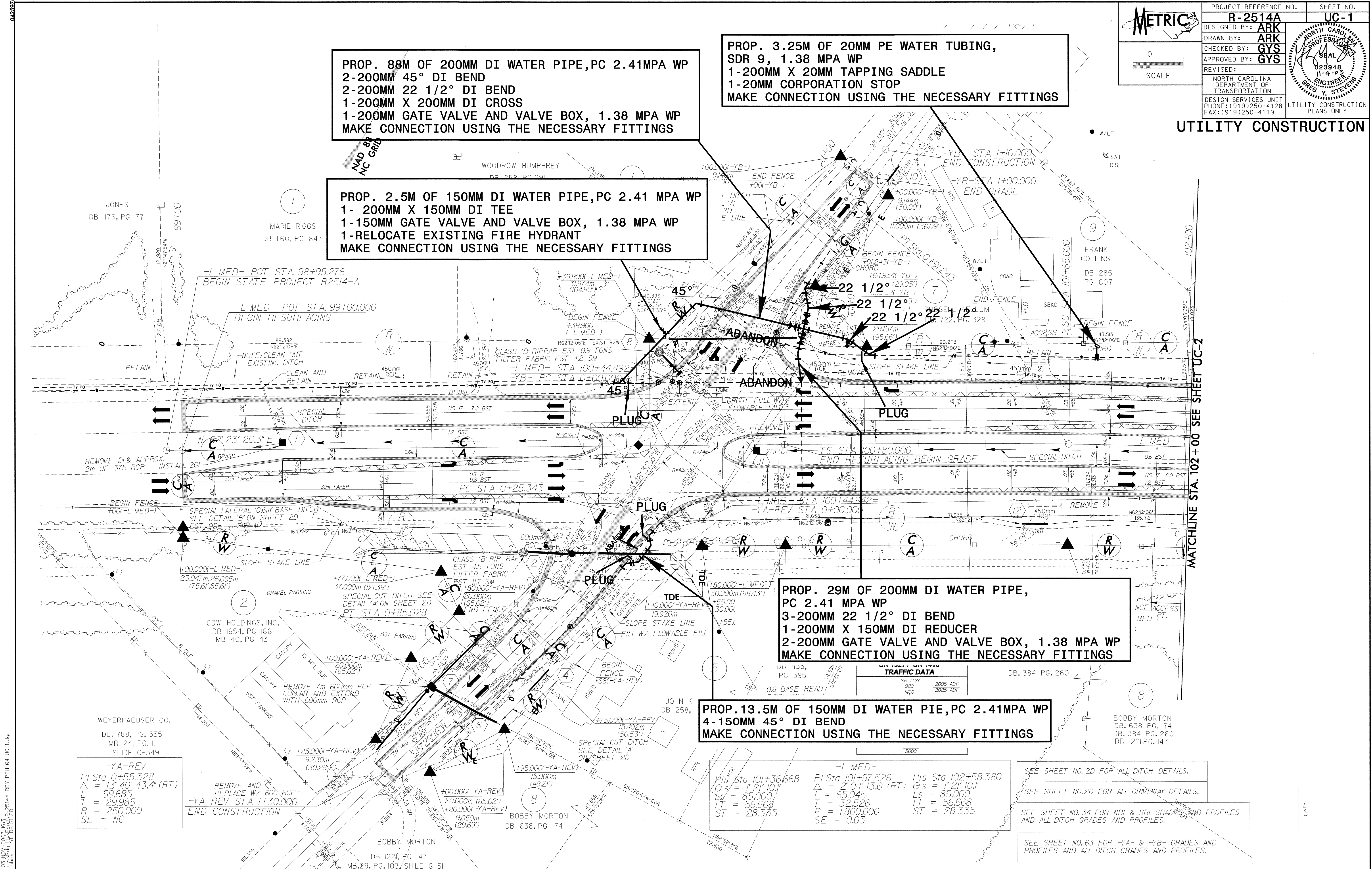
PROP. 29M OF 200MM DI WATER PIPE,
 PC 2.41 MPA WP
 3-200MM 22 1/2° DI BEND
 1-200MM X 150MM DI REDUCER
 2-200MM GATE VALVE AND VALVE BOX, 1.38 MPA WP
 MAKE CONNECTION USING THE NECESSARY FITTINGS

PROP. 13.5M OF 150MM DI WATER PIPE, PC 2.41MPA WP
 4-150MM 45° DI BEND
 MAKE CONNECTION USING THE NECESSARY FITTINGS

-YA-REV
 PI Sta 0+55.328
 $\Delta = 13^{\circ} 40' 43.4" (RT)$
 L = 59.685
 T = 29.985
 R = 250.000
 SE = NC

PI Sta 101+36.668 $\Delta S = 1^{\circ} 21' 10.1"$ Ls = 85.000 LT = 56.668 ST = 28.335	-L MED- PI Sta 101+97.526 $\Delta = 2^{\circ} 04' 13.6" (RT)$ Ls = 65.045 T = 32.526 R = 1,800.000 SE = 0.03	PIs Sta 102+58.380 $\Delta S = 1^{\circ} 21' 10.1"$ Ls = 85.000 LT = 56.668 ST = 28.335
--	--	---

SEE SHEET NO. 2D FOR ALL DITCH DETAILS.
 SEE SHEET NO. 2D FOR ALL DRIVEWAY DETAILS.
 SEE SHEET NO. 34 FOR MBL & SBL GRADES AND PROFILES AND ALL DITCH GRADES AND PROFILES.
 SEE SHEET NO. 63 FOR -YA- & -YB- GRADES AND PROFILES AND ALL DITCH GRADES AND PROFILES.



05-MAY-2005 08:51
 R:\U11\205\NC04\UC-1\2514A.RDY_PSH.04_UC-1.dgn
 04/25/05