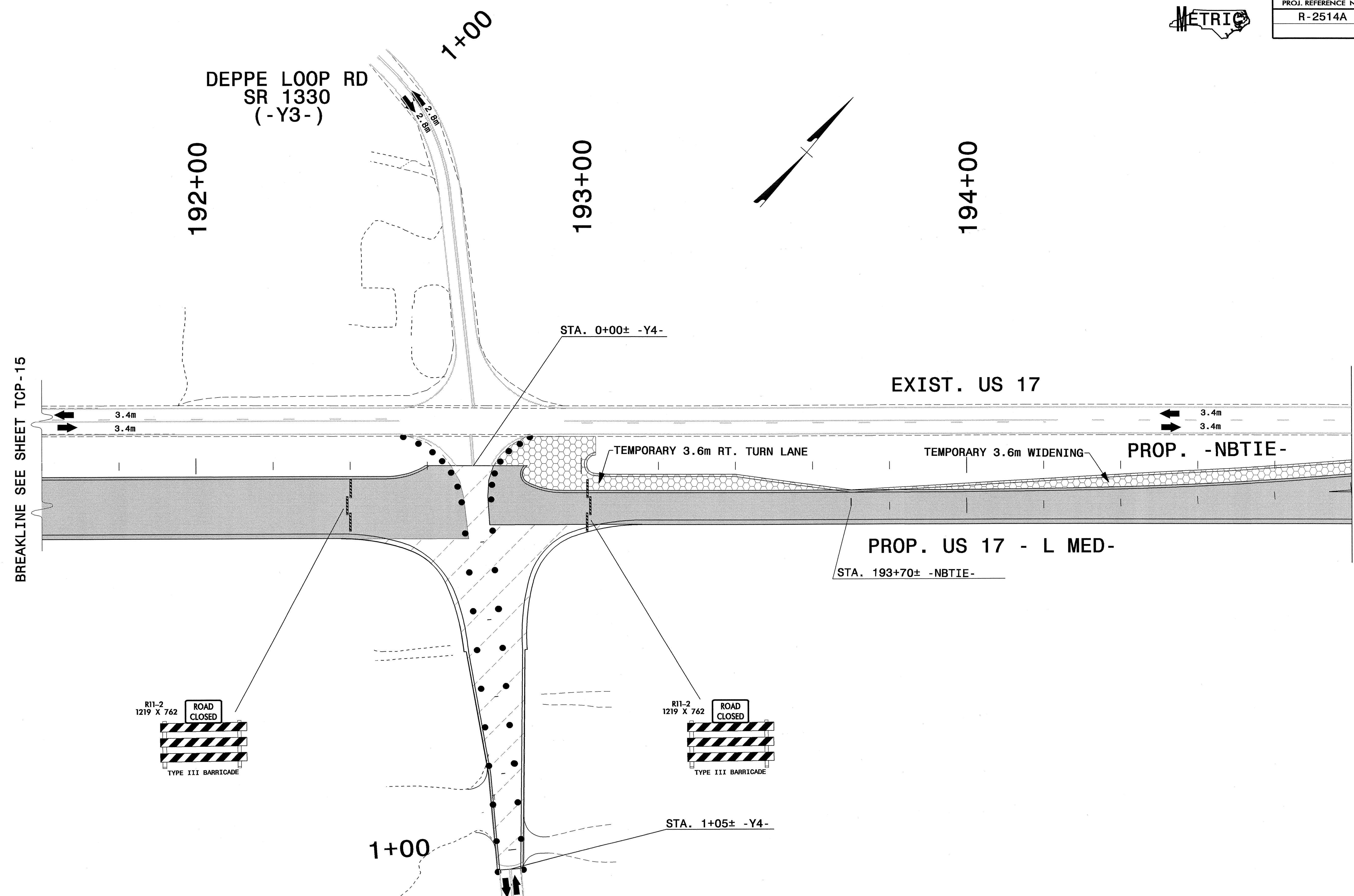


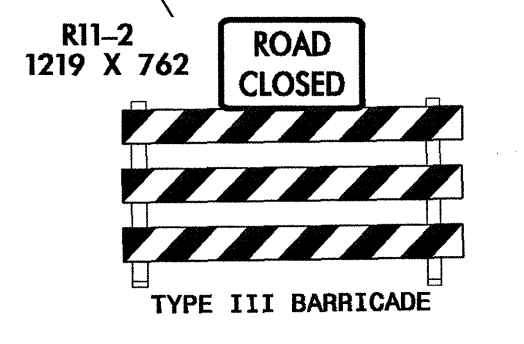
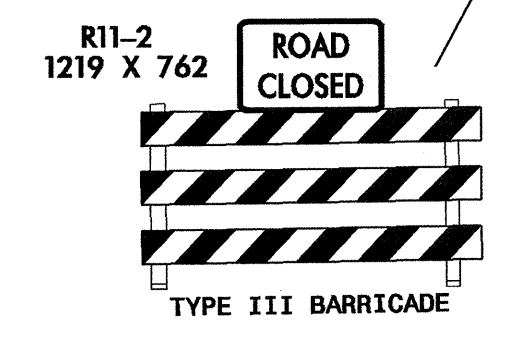


PROJ. REFERENCE NO.	SHEET NO.
R-2514A	TCP-16



BREAKLINE SEE SHEET TCP-15

MATCH LINE
STA. 195+00 ± -L MED-
SEE SHEET TCP-17



LEGEND

	REMOVAL OF EXISTING PAVEMENT
	PROPOSED CONSTRUCTION
	TEMPORARY PAVEMENT
	WEDGING & WIDENING

APPROVED: _____	DATE: _____	PHASE I DETAIL							
				SCALE: NONE	<table border="1"> <tr> <th colspan="2">REVISIONS</th> </tr> <tr> <td> </td> <td> </td> </tr> <tr> <td> </td> <td> </td> </tr> </table>	REVISIONS			
		REVISIONS							
DATE: 11/18/03	DWG. BY: KWD	DESIGN BY: KWD	REVIEWED BY: JHJ						
		<small>CADD FILE R-2514A_TC_TCP16.DGN</small>							

17-NOV-2003 19:17
 G:\CAD\2003\17-NOV-2003\17-NOV-2003\TrafficControl\TCP\R-2514A_TC_TCP16.dgn
 WILLIAMS AT WILLIAMS