



PROJ. REFERENCE NO.	SHEET NO.
R-2514A	TCP-33

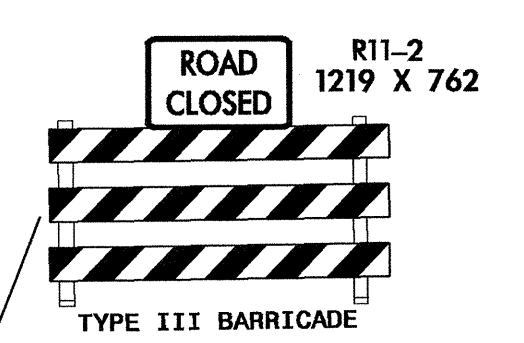
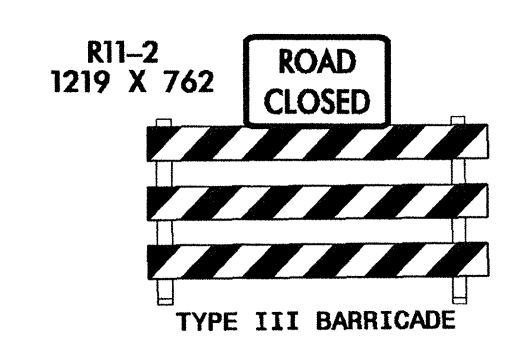
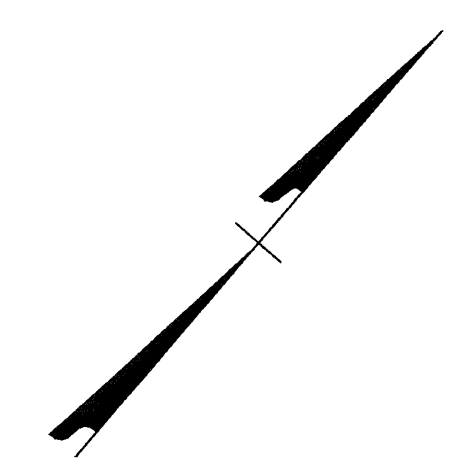
170+00

DEPPE LOOP RD
SR 1330
(-Y1-)

STA. 0+90 ± -Y1-

172+00

173+00



PROP. US 17 SB -L MED-

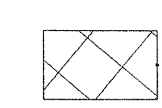
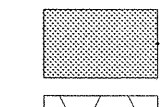
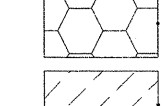
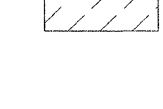
STA. 0+00 ± -Y1-

PROP. US 17 NB -L MED-

BREAKLINE SEE SHEET TCP-32

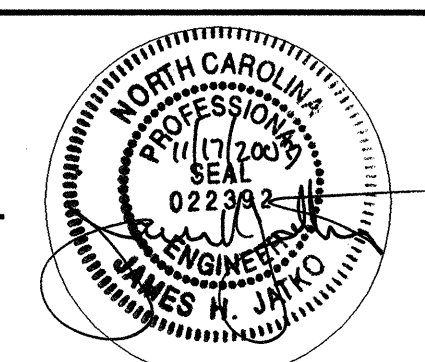
BREAKLINE SEE SHEET TCP-34

LEGEND

-  REMOVAL OF EXISTING PAVEMENT
-  PROPOSED CONSTRUCTION
-  TEMPORARY PAVEMENT
-  WEDGING & WIDENING

DEPPE LOOP
SR 1436
(-Y2-)

1+00

APPROVED:	DATE:	PHASE II DETAIL		
				SCALE: NONE
		DATE: 11/18/03	REVISIONS	
		DWG. BY: KWD		
		DESIGN BY: KWD		
REVIEWED BY: JHJ		<small>CADD FILE: R-2514A_TC_TCP33.DGN</small>		

17-NOV-2003 2:04:08
c:\cadd\7054\4001\R-2514A\TrafficControl\TCP\R-2514A_TC_TCP33.dgn
clump AT DUNN