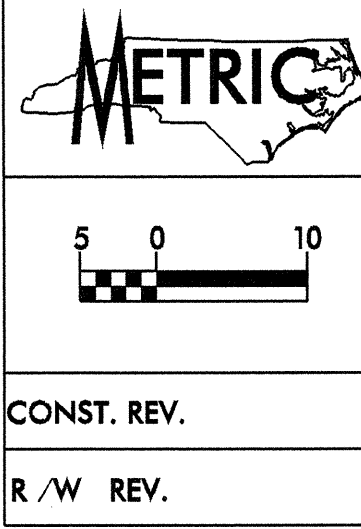
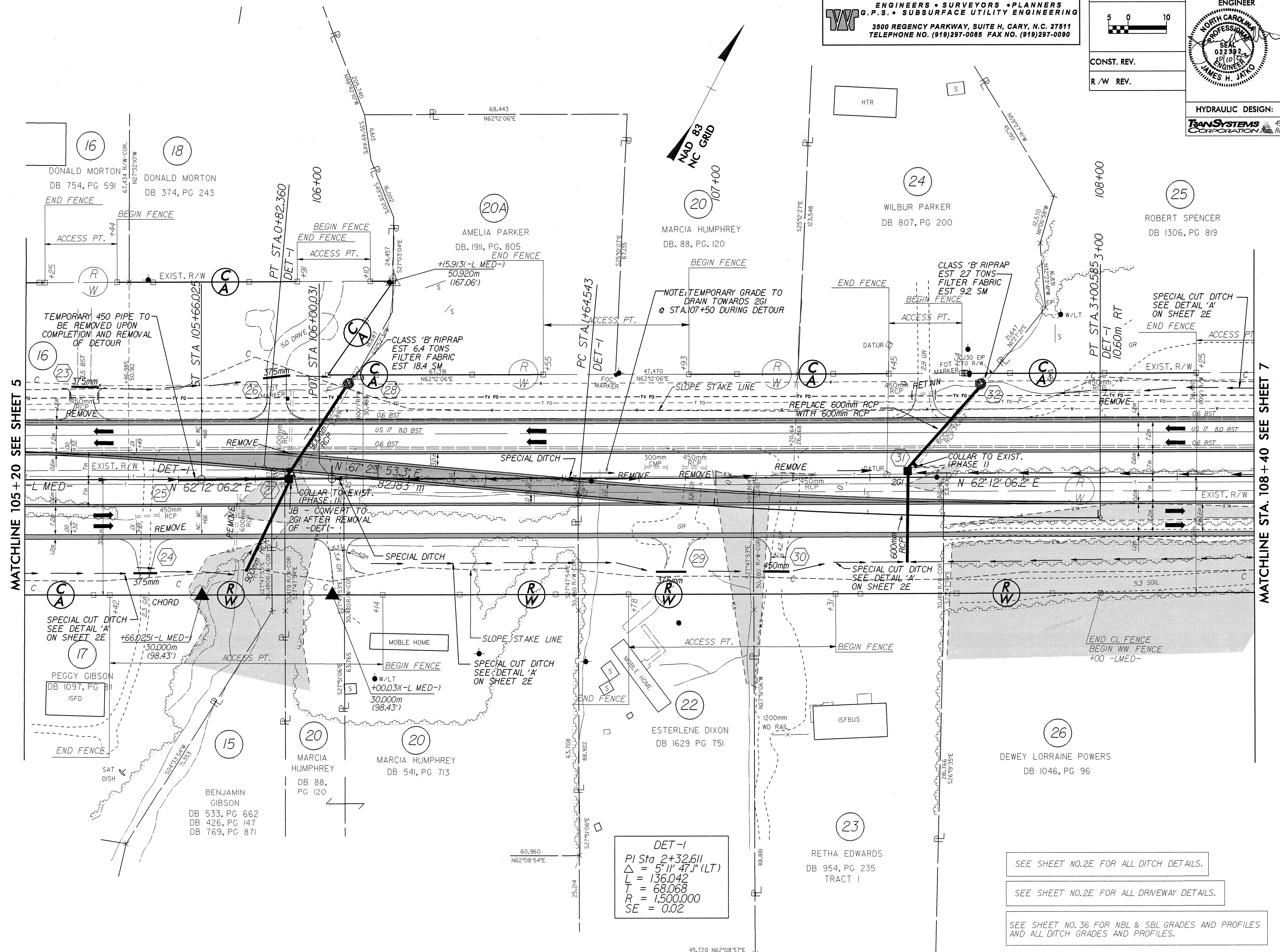


ROADWAY DESIGN BY:
TAYLOR WISEMAN & TAYLOR
 ENGINEERS • SURVEYORS • PLANNERS
 G.P.S. • SUBSURFACE UTILITY ENGINEERING
 3500 REGENCY PARKWAY, SUITE H, CARY, N.C. 27511
 TELEPHONE NO. (919)297-0085 FAX NO. (919)297-0090



PROJECT REFERENCE NO. R-2514A	SHEET NO. 6
R/W SHEET NO.	
ROADWAY DESIGN ENGINEER JAMES H. JATKO	HYDRAULICS ENGINEER RAY D. LOYINGGOOD
CONST. REV.	
R/W REV.	
HYDRAULIC DESIGN: TRANSYSTEMS CORPORATION	
4917 Waters Edge Drive, Suite 235 Raleigh, NC 27606 (919) 233-8125	



MATCHLINE 105+20 SEE SHEET 5

MATCHLINE STA. 108+40 SEE SHEET 7

DET-1
 PI Sta 2+32611
 $\Delta = 5' 11" 47.1" (LT)$
 $L = 136.042$
 $T = 68.068$
 $R = 1,500.000$
 $SE = 0.02$

- SEE SHEET NO. 2E FOR ALL DITCH DETAILS.
- SEE SHEET NO. 2E FOR ALL DRIVEWAY DETAILS.
- SEE SHEET NO. 36 FOR NBL & SBL GRADES AND PROFILES AND ALL DITCH GRADES AND PROFILES.

6/10/2009 10:55 AM C:\Users\jhatko\Documents\Projects\2514A\RDY_PSH_06.dgn