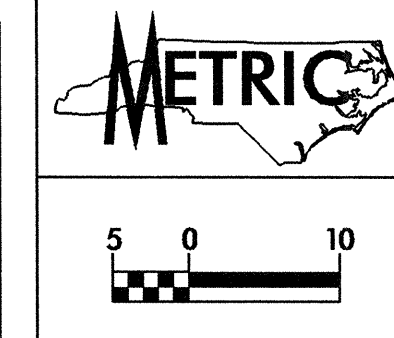
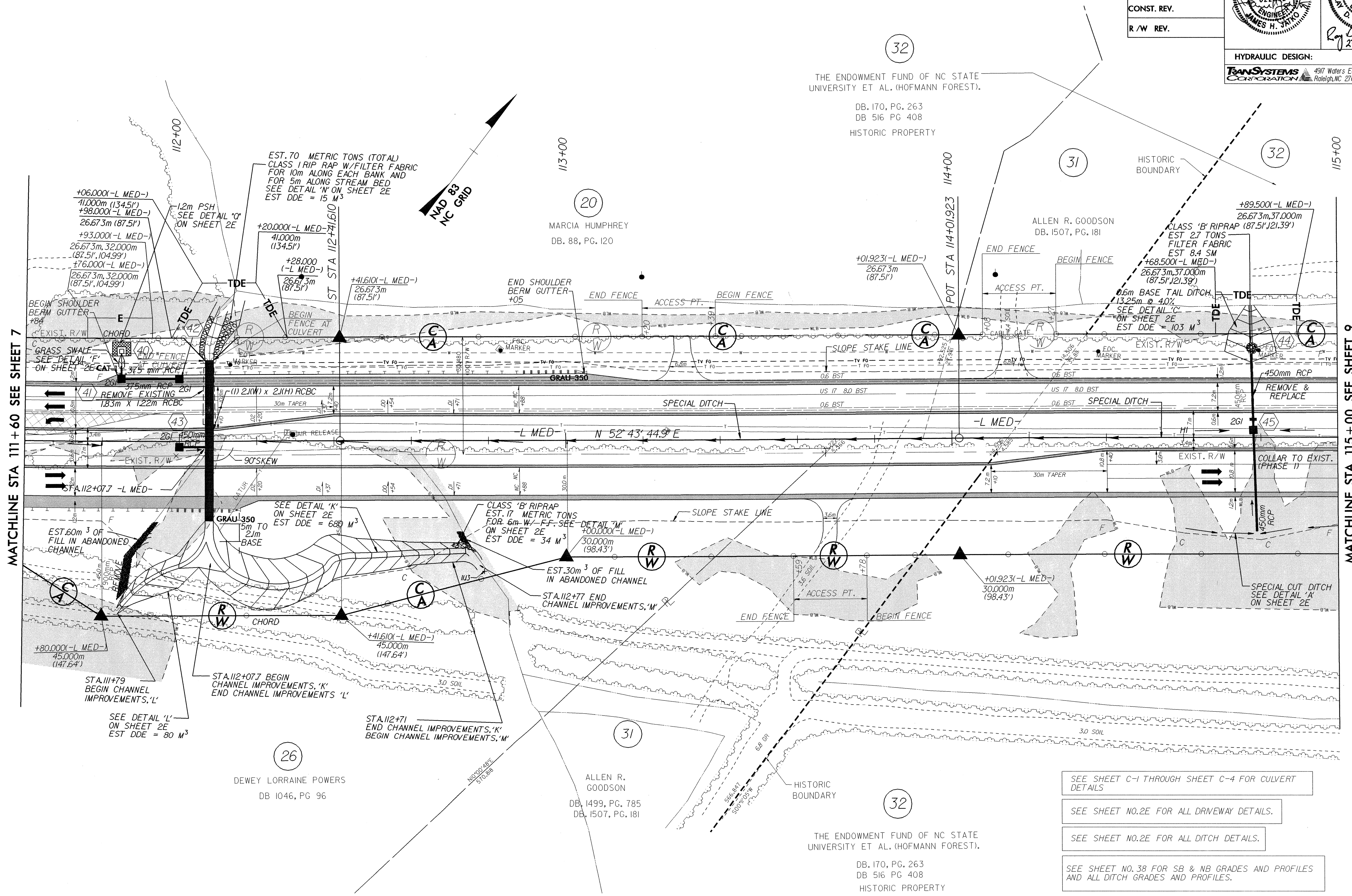


ROADWAY DESIGN BY:
TAYLOR WISEMAN & TAYLOR
 ENGINEERS • SURVEYORS • PLANNERS
 G.P.S. • SUBSURFACE UTILITY ENGINEERING
 3500 REGENCY PARKWAY, SUITE H, CARY, N.C. 27511
 TELEPHONE NO. (919)297-0085 FAX NO. (919)297-0090



PROJECT REFERENCE NO. R-2514A	SHEET NO. 8
R/W SHEET NO.	
ROADWAY DESIGN ENGINEER JAMES H. JAYCOCK NORTH CAROLINA PROFESSIONAL SEAL 022382 EXPIRES 12/31/04	HYDRAULICS ENGINEER R. D. LOVINGGOOD NORTH CAROLINA PROFESSIONAL SEAL 18775 EXPIRES 12/31/04
CONST. REV.	
R/W REV.	

HYDRAULIC DESIGN:
TRANSYSTEMS CORPORATION
 4977 Waters Edge Drive, Suite 235
 Raleigh, NC 27606 (919) 233-8125



MATCHLINE STA 111 + 60 SEE SHEET 7

MATCHLINE STA 115 + 00 SEE SHEET 9

- SEE SHEET C-1 THROUGH SHEET C-4 FOR CULVERT DETAILS
- SEE SHEET NO. 2E FOR ALL DRIVEWAY DETAILS.
- SEE SHEET NO. 2E FOR ALL DITCH DETAILS.
- SEE SHEET NO. 38 FOR SB & NB GRADES AND PROFILES AND ALL DITCH GRADES AND PROFILES.

CAD: 7/10/04 10:00 AM 2004 0000 roadway R-2514A.FD.L_PSH.DWG