

6/10/09

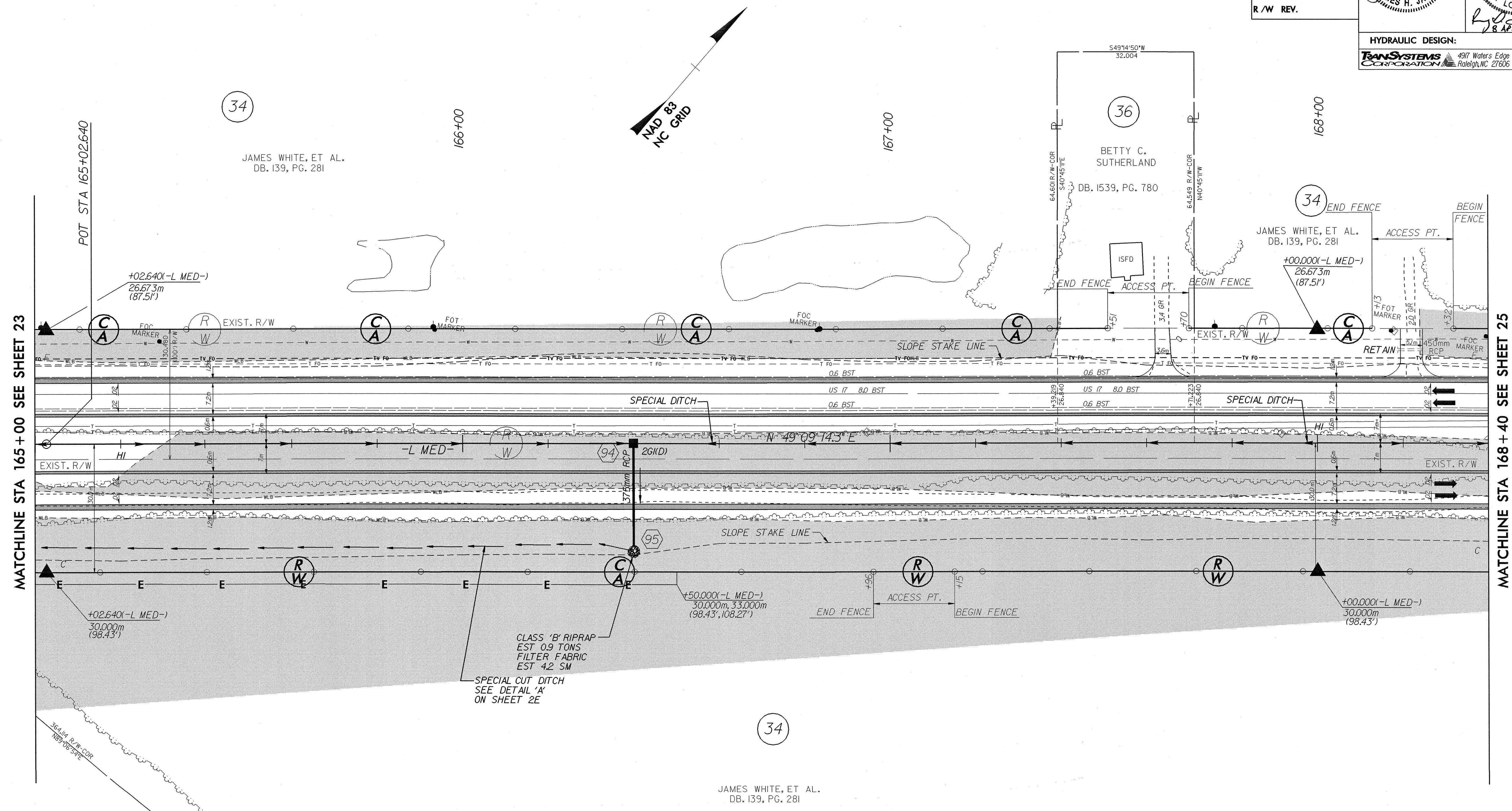
ROADWAY DESIGN BY:
TAYLOR WISEMAN & TAYLOR
 ENGINEERS • SURVEYORS • PLANNERS
 G.P.S. • SUBSURFACE UTILITY ENGINEERING
 3500 REGENCY PARKWAY, SUITE H, CARY, N.C. 27511
 TELEPHONE NO. (919)297-0085 FAX NO. (919)297-0090

METRIC

5 0 10

CONST. REV.
R/W REV.

PROJECT REFERENCE NO. R-2514A	SHEET NO. 24
R/W SHEET NO.	
ROADWAY DESIGN ENGINEER JAMES H. JAYCOCK NORTH CAROLINA PROFESSIONAL SEAL 022392 EXPIRES 12/31/09	HYDRAULICS ENGINEER D. LOVINGGOOD NORTH CAROLINA PROFESSIONAL SEAL 18776 EXPIRES 12/31/09
HYDRAULIC DESIGN: TRANSYSTEMS CORPORATION 4917 Waters Edge Drive, Suite 235 Raleigh, NC 27606 (919) 233-8125	



MATCHLINE STA 165 + 00 SEE SHEET 23

MATCHLINE STA 168 + 40 SEE SHEET 25

SEE SHEET NO.2E FOR ALL DRIVEWAY DETAILS.

SEE SHEET NO.2E FOR ALL DITCH DETAILS.

SEE SHEET NO. 54 FOR NBL & SBL GRADES AND PROFILES AND ALL DITCH GRADES AND PROFILES.

06-APR-2004 11:33 AM C:\PROJECTS\2004\1133\1133.DWG WJL:ame