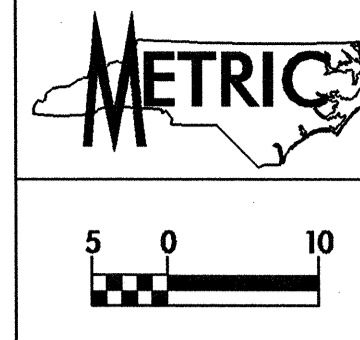


6/10/03
 1:7015-R-2514A-Roadway (R-2514A-RD)-PSH-33.dgn
 1:7015-R-2514A-Roadway (R-2514A-RD)-PSH-33.dgn
 1:7015-R-2514A-Roadway (R-2514A-RD)-PSH-33.dgn

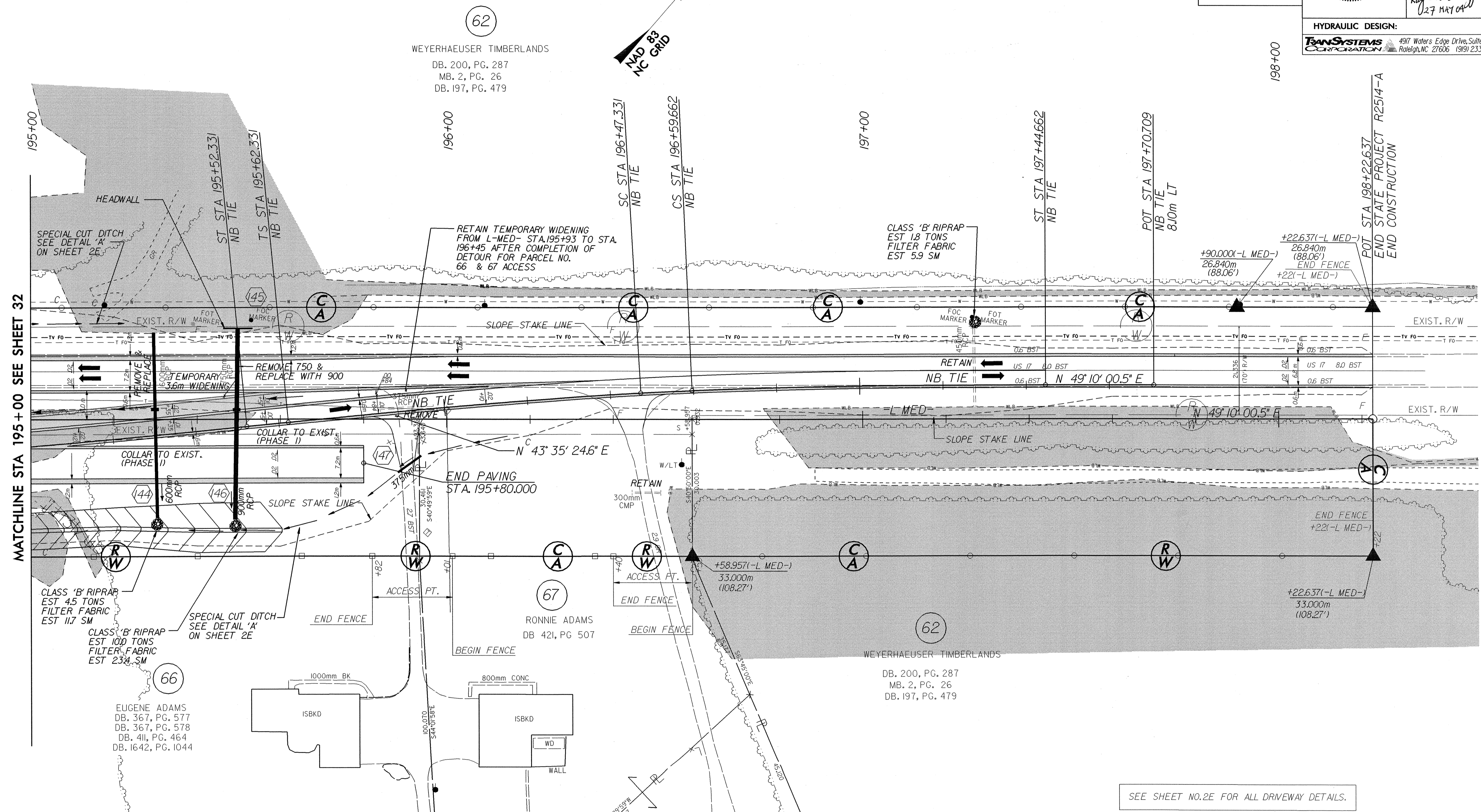
ROADWAY DESIGN BY:
TAYLOR • WISEMAN & TAYLOR
 ENGINEERS • SURVEYORS • PLANNERS
 G.P.S. • SUBSURFACE UTILITY ENGINEERING
 3500 REGENCY PARKWAY, SUITE H, CARY, N.C. 27511
 TELEPHONE NO. (919)297-0085 FAX NO. (919)297-0090



PROJECT REFERENCE NO. R-2514A	SHEET NO. 33
R/W SHEET NO.	
ROADWAY DESIGN ENGINEER JAMES H. JAYCO	HYDRAULICS ENGINEER RALPH D. LOVINGOOD

CONST. REV.
 R/W REV.

HYDRAULIC DESIGN:
TRANS SYSTEMS CORPORATION
 4917 Waters Edge Drive, Suite 235
 Raleigh, NC 27606 (919) 233-8125



NB TIE
 Pts Sta 196+49.003 PI Sta 196+83.496 Pts Sta 197+18.000
 $\theta_s = 2^\circ 26' 06.3''$ $\Delta = 0^\circ 42' 23.4''$ (RT) $\theta_s = 2^\circ 26' 06.3''$
 $L_s = 85.000$ $L = 12.331$ $L_s = 85.000$
 $LT = 56.672$ $T = 61.65$ $LT = 56.672$
 $ST = 28.338$ $R = 1,000,000$ $ST = 28.338$
 $SE = 0.02$

- SEE SHEET NO.2E FOR ALL DRIVEWAY DETAILS.
- SEE SHEET NO.2E FOR ALL DITCH DETAILS.
- SEE SHEET NO.63 FOR NBL & SBL GRADES AND PROFILES AND ALL DITCH GRADES AND PROFILES.
- SEE SHEET NO.64 FOR NB TIE GRADE AND PROFILE AND DITCH GRADE AND PROFILE.