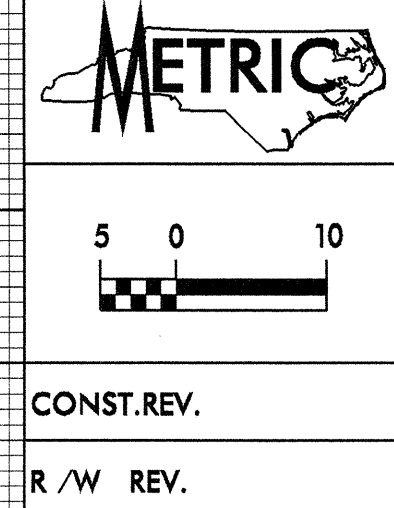


HYDRAULIC DATA		
DRAINAGE AREA	= 21.0	SQ. KM
DESIGN FREQUENCY	= 50	YRS
DESIGN DISCHARGE	= 40	CMS
DESIGN HW ELEVATION	= 9.58	M
100 YEAR DISCHARGE	= 52	CMS
100 YEAR HW ELEVATION	= 9.75	M
OVERTOPPING FREQUENCY	= 500+	YRS
OVERTOPPING DISCHARGE	= 250	CMS
OVERTOPPING ELEVATION	= 10.37	M
BASE WATERWAY OPEN. (EX.)	= 34.5	SQ. M.
BASE WATERWAY OPEN. (PR.)	= 36.4	SQ. M.

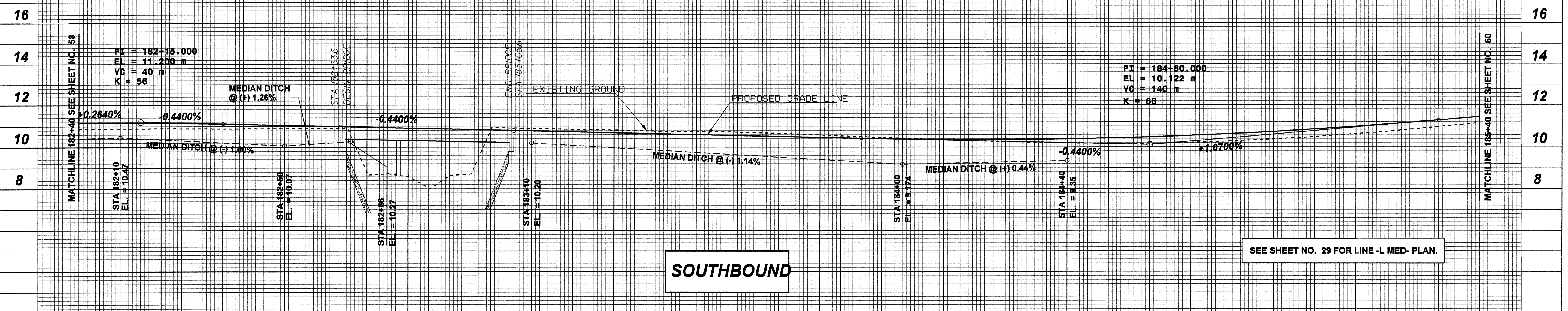
ROADWAY DESIGN BY:  
**TAYLOR • WISEMAN & TAYLOR**  
 ENGINEERS • SURVEYORS • PLANNERS  
 G.P.S. • SUBSURFACE UTILITY ENGINEERING  
 3500 REGENCY PARKWAY, SUITE H, CARY, N.C. 27511  
 TELEPHONE NO. (919)297-0085 FAX NO. (919)297-0090



PROJECT REFERENCE NO. R-2514A	SHEET NO. 59
ROADWAY DESIGN ENGINEER JAMES H. JATKO	HYDRAULICS ENGINEER D. LOVINGGOOD
Professional Engineer Seal 025390 19775	Professional Engineer Seal 19775 13 Oct/03

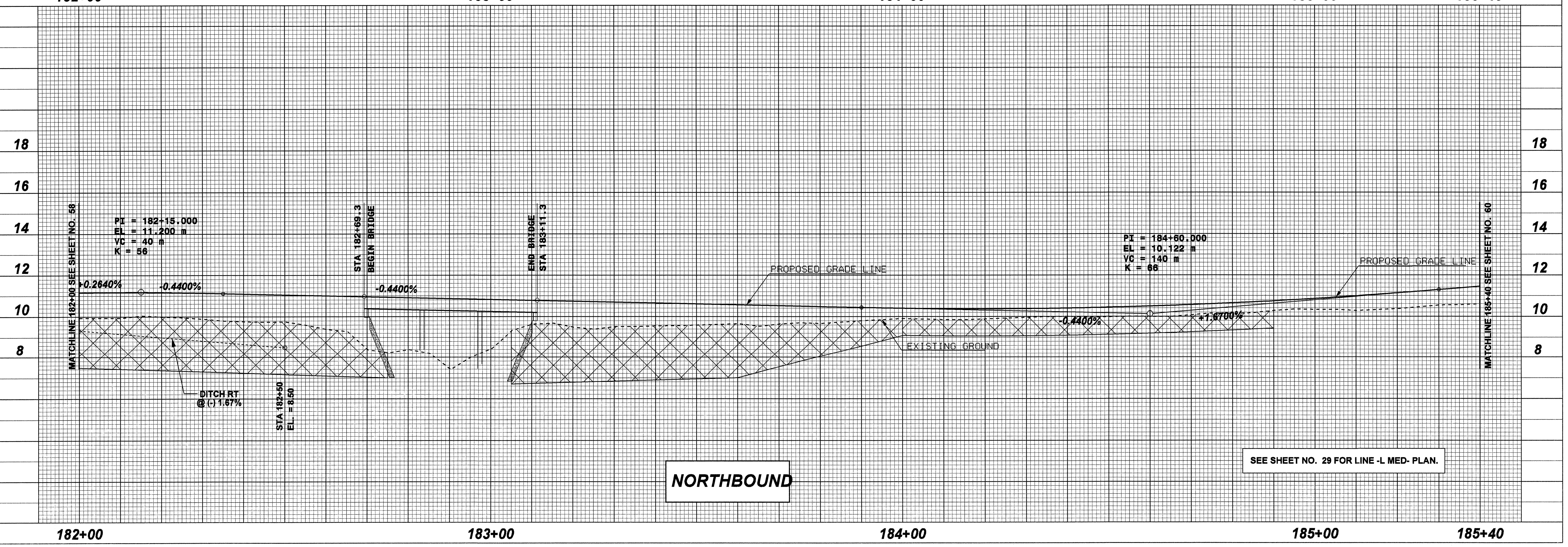
**BM 13 BIG NAIL IN 6" OAK LOCATED  
 16.64M LT. OF BL STA 86+14.33  
 Elev. = 10.00**

HYDRAULIC DESIGN :  
**TEAN SYSTEMS CORPORATION**  
 4917 Waters Edge Drive, Suite 235  
 Raleigh, NC 27606 (919) 233-8125



**SOUTHBOUND**

SEE SHEET NO. 29 FOR LINE -L MED- PLAN.



**NORTHBOUND**

SEE SHEET NO. 29 FOR LINE -L MED- PLAN.