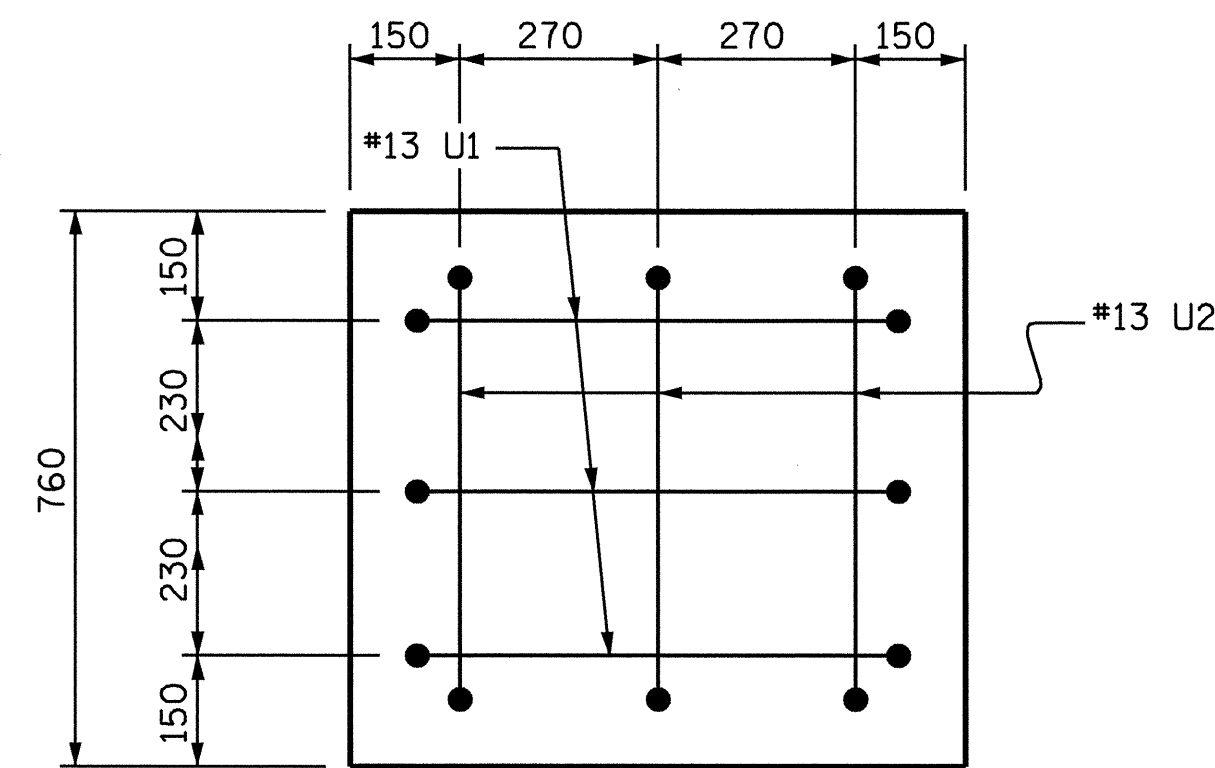
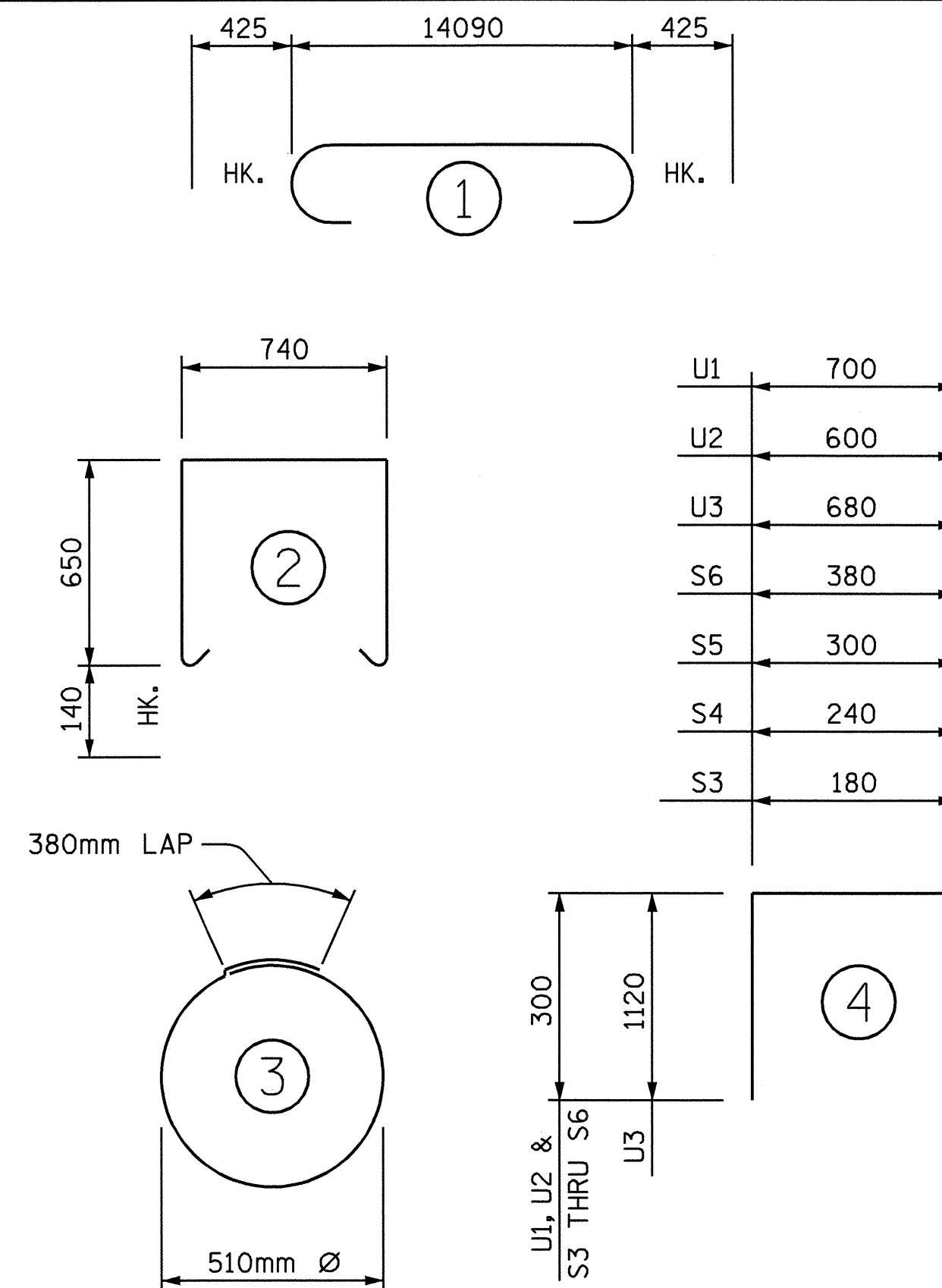


**SECTION THRU CAP**



**VIEW "X-X"**

**BAR TYPES**



ALL BAR DIMENSIONS ARE OUT TO OUT

**BILL OF MATERIAL**

**BENT #2**

BAR NO.	NO.	SIZE	TYPE	LENGTH	WEIGHT
B1	4	#32	1	14940	383
B2	4	#32	STR	14120	362
B3	16	#13	STR	7440	118
B4	16	#13	STR	740	12
D1	56	#19	STR	460	58
S1	54	#16	2	2320	194
S2	16	#13	3	1980	31
S3	2	#13	4	780	2
S4	2	#13	4	840	2
S5	2	#13	4	900	2
S6	2	#13	4	980	2
U1	6	#13	4	1300	8
U2	6	#13	4	1200	7
U3	2	#29	4	2920	30

REINFORCING STEEL = 1211 KG

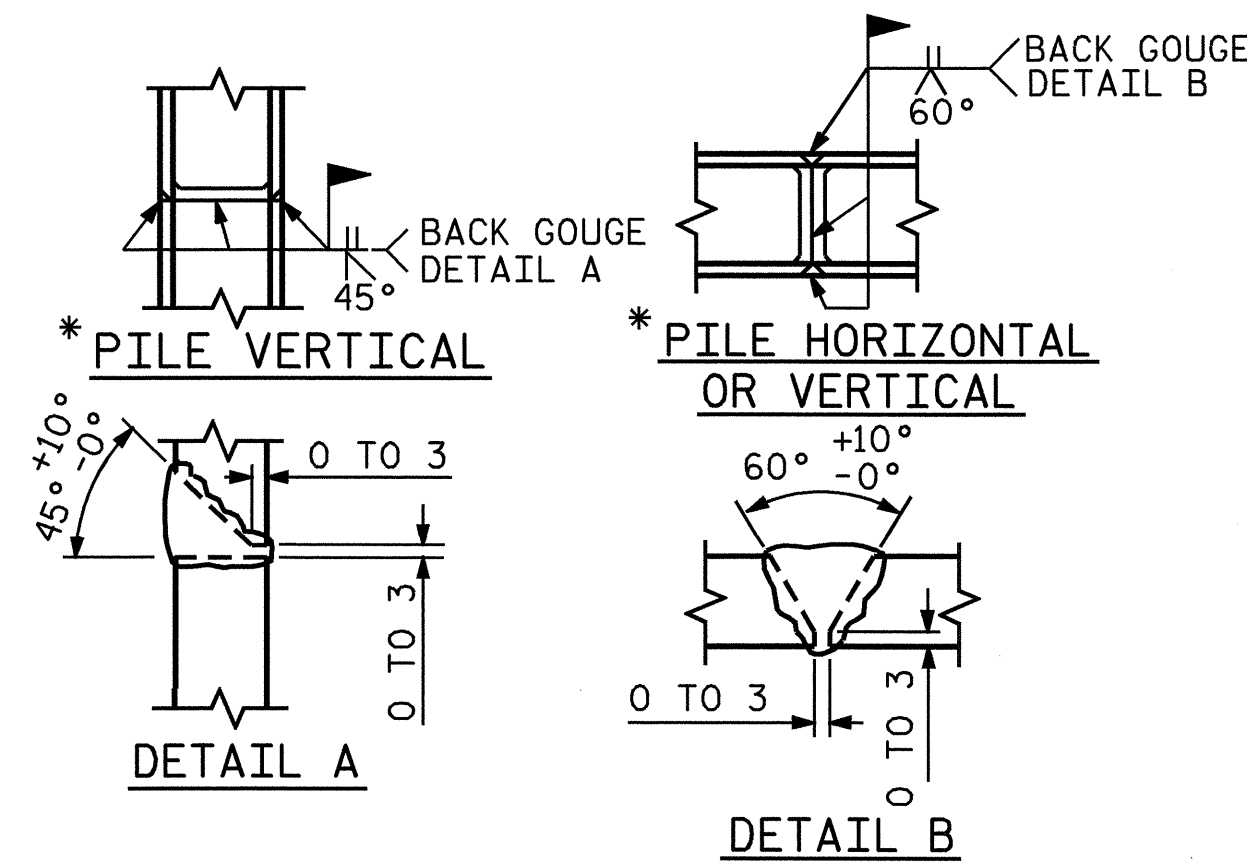
**CLASS "A" CONCRETE BREAKDOWN**

POUR #1 (CAP)	=	9.1	m <sup>3</sup>
POUR #2 (LATERAL GUIDE)	=	0.1	m <sup>3</sup>
<b>CLASS "A" CONCRETE TOTAL</b>	=	<b>9.2</b>	<b>m<sup>3</sup></b>

**HP 310 X 79 STEEL PILES**

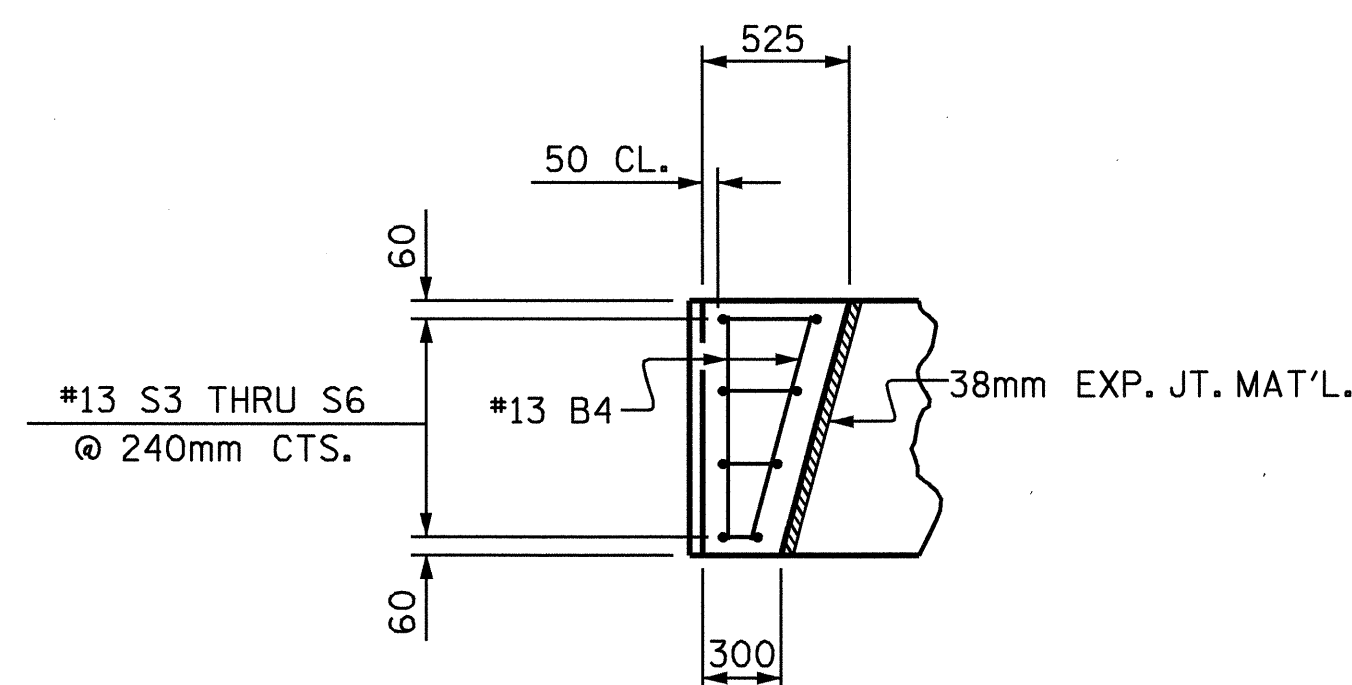
NO. 8 112.0 m

GALVANINING STEEL PILES LUMP SUM

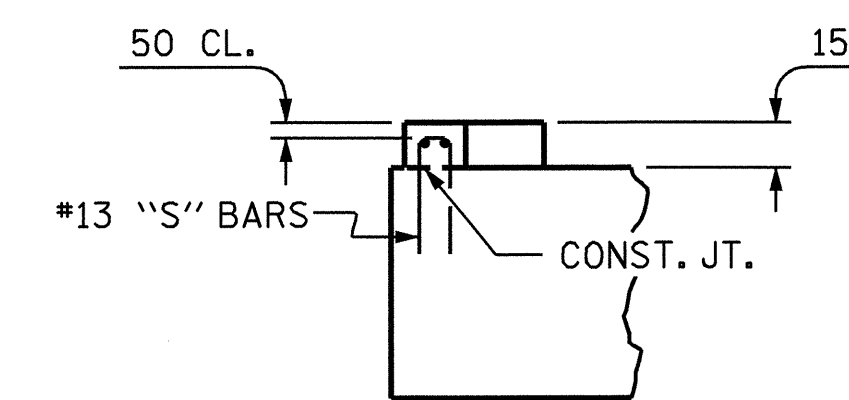


\* POSITION OF PILE DURING WELDING.

**PILE SPLICE DETAILS**



**PLAN**



**ELEVATION**

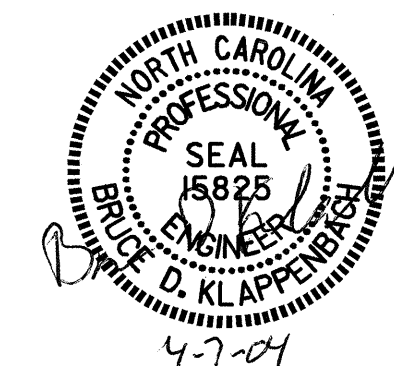
**LATERAL GUIDE DETAILS**

PROJECT NO. R-2514A  
ONslow COUNTY  
 STATION: 182+87.400-L-MED

SHEET 2 OF 2

STATE OF NORTH CAROLINA  
 DEPARTMENT OF TRANSPORTATION  
 RALEIGH

**SUBSTRUCTURE**  
**BENT #2**  
**LEFT LANE**



DRAWN BY: D. A. GLADDEN DATE: 10-31-03  
 CHECKED BY: G.M. Patterson DATE: 12-09-03

07-APR-2004 11:25  
 W:\squad\N2514a\Strland2\dgladden\Microstation\xr2514a.sd\_B2\_01.dgn  
 dgladden

REVISIONS					SHEET NO.
NO.	BY:	DATE:	NO.	BY:	DATE:
1			3		
2			4		

STR. #1