

(+) 0.2640% (-) 0.4400%

PISTA. = 182+15.000 -L-MED.
EL. = 11.200
VC = 40m

GRADE DATA -L- MED.

NOTES

ALL DIMENSIONS ARE IN MILLIMETERS UNLESS OTHERWISE NOTED.

ALL ELEVATIONS ARE IN METERS.

ASSUMED LIVE LOAD = MS 18 OR ALTERNATE LOADING.

FOR OTHER DESIGN DATA AND GENERAL NOTES, SEE SHEET SNSM.

FOR EROSION CONTROL MEASURES SEE EROSION CONTROL PLANS.

TOP-DOWN CONSTRUCTION METHODS ARE REQUIRED FOR THE CONSTRUCTION OF THIS STRUCTURE. THE USE OF TEMPORARY CAUSEWAYS OR A WORK BRIDGE WILL NOT BE PERMITTED.

THIS BRIDGE HAS BEEN DESIGNED BY THE STRENGTH DESIGN METHOD AS SPECIFIED IN AASHTO STANDARD SPECIFICATIONS.

PILES FOR END BENT NO.1 AND 2 SHALL BE DRIVEN TO A MINIMUM BEARING CAPACITY OF 530 kN (60 TONS) EACH.

PILES AT BENTS NO.1 AND 2 SHALL BE DRIVEN TO AN ELEVATION NO HIGHER THAN 2.4m AND SATISFY THE BEARING CAPACITY OF 530 kN (60 TONS) EACH.

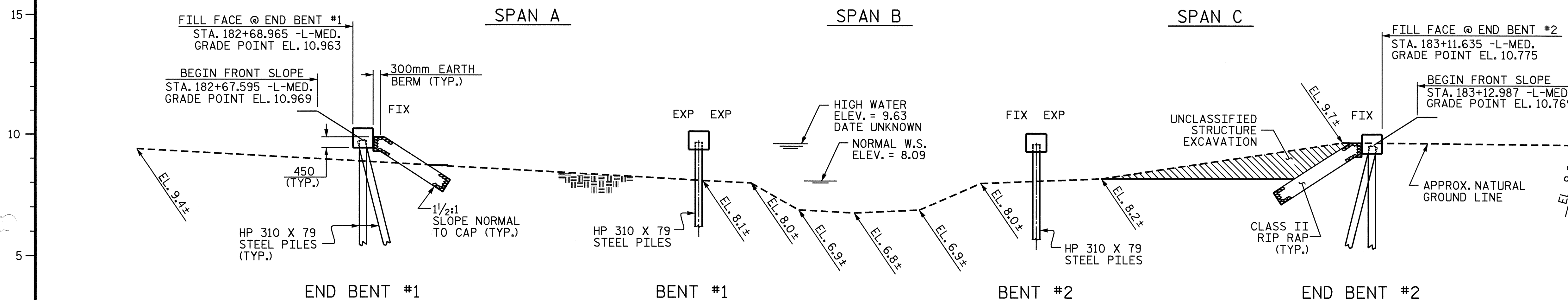
THE SCOUR CRITICAL ELEVATION FOR BENTS NO.1 AND 2 IS 3.5m. THE SCOUR CRITICAL ELEVATIONS ARE FOR USE BY MAINTENANCE FORCES TO MONITOR POSSIBLE SCOUR PROBLEMS DURING THE LIFE OF THE STRUCTURE.

WHEN DRIVING PILES, THE MAXIMUM BLOW COUNT SHALL NOT BE EXCEEDED.

THE MATERIAL SHOWN IN THE CROSS-HATCHED AREA SHALL BE EXCAVATED FOR A DISTANCE OF 9m EACH SIDE OF CENTERLINE ROADWAY AS DIRECTED BY THE ENGINEER. THE ESTIMATED QUANTITY IS LESS THAN 380 m³. THIS WORK WILL BE PAID FOR AT THE CONTRACT LUMP SUM PRICE FOR UNCLASSIFIED STRUCTURE EXCAVATION. FOR UNCLASSIFIED STRUCTURE EXCAVATION, SEE SPECIAL PROVISIONS.

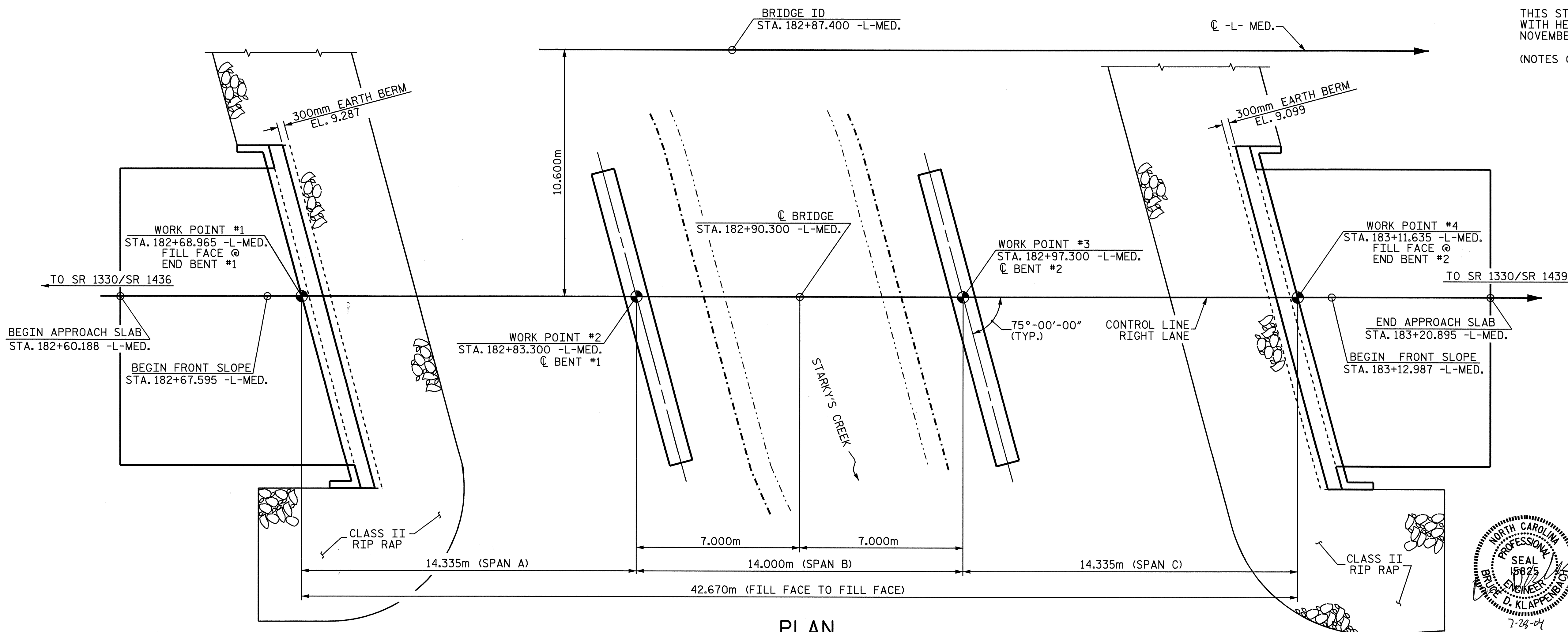
THIS STRUCTURE HAS BEEN DESIGNED IN ACCORDANCE WITH HEC 18, "EVALUATING SCOUR AT BRIDGES", NOVEMBER, 1995.

(NOTES CONTINUED ON SHEET 3 OF 3)



SECTION ALONG CONTROL LINE-RIGHT LANE

(BENTS AND END BENTS ON SECTION AT RIGHT ANGLES TO BENTS)

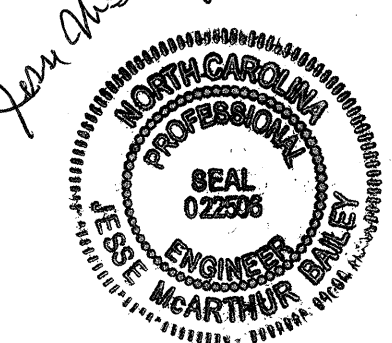


PLAN

(PILES NOT SHOWN FOR CLARITY)

DRAWN BY : W.D. CRUTCHER DATE : 3-03
CHECKED BY : D.A. GLADDEN DATE : 4-1-03

Jim McArthur
7/30/04



PROJECT NO. R-2514A
ONSLow COUNTY
STATION: 182+87.400-L-MED.

SHEET 1 OF 3 BRIDGE NO. 282

STATE OF NORTH CAROLINA
DEPARTMENT OF TRANSPORTATION
RALEIGH
GENERAL DRAWING
FOR BRIDGE ON US 17 OVER
STARKY'S CREEK BETWEEN
SR 1330/SR 1436 AND
SR 1330/SR 1439
RIGHT LANE

REVISIONS						SHEET NO.	
NO.	BY:	DATE:	NO.	BY:	DATE:	S-24	
1			3			TOTAL SHEETS 46	
2			4				

