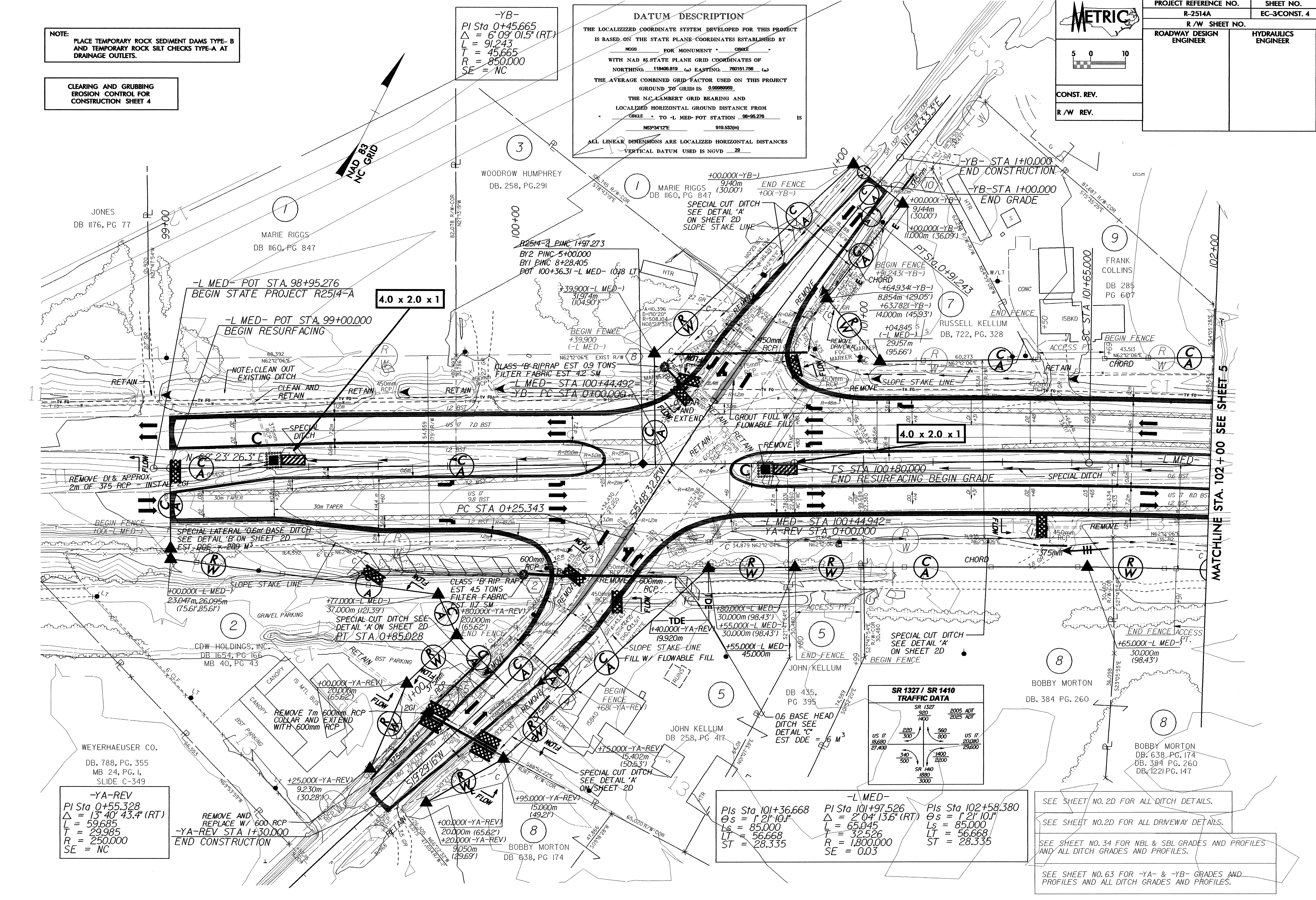


DATUM DESCRIPTION
 THE LOCALIZED COORDINATE SYSTEM DEVELOPED FOR THIS PROJECT IS BASED ON THE STATE PLANE COORDINATES ESTABLISHED BY NCSS FOR MONUMENT CORNER WITH NAD 83 STATE PLANE GRID COORDINATES OF NORTHING: 118408819 () EASTING: 760151756 () THE AVERAGE COMBINED GRID FACTOR USED ON THIS PROJECT GROUND TO GRID IS: 0.99999999 THE N.C. LAMBERT GRID BEARING AND LOCALIZED HORIZONTAL GROUND DISTANCE FROM CORNER TO -L MED- POT STATION 98+95.276 IS N63°34'12"E 919.532(m) ALL LINEAR DIMENSIONS ARE LOCALIZED HORIZONTAL DISTANCES VERTICAL DATUM USED IS NGVD 29

-YB-
 PI Sta 0+45.665
 $\Delta = 6^{\circ}09'01.5''$ (RT)
 L = 91.243
 T = 45.665
 R = 850.000
 SE = NC

NOTE:
 PLACE TEMPORARY ROCK SEDIMENT DAMS TYPE-B AND TEMPORARY ROCK SILT CHECKS TYPE-A AT DRAINAGE OUTLETS.

CLEARING AND GRUBBING EROSION CONTROL FOR CONSTRUCTION SHEET 4



-YA-REV
 PI Sta 0+55.328
 $\Delta = 13^{\circ}40'43.4''$ (RT)
 L = 59.685
 T = 29.985
 R = 250.000
 SE = NC

-L MED-
 Pls Sta 101+36.668
 $\Delta s = 1^{\circ}21'10.1''$
 Ls = 85.000
 LT = 56.668
 ST = 28.335

-L MED-
 PI Sta 101+97.526
 $\Delta = 2^{\circ}04'13.6''$ (RT)
 L = 65.045
 T = 32.526
 R = 1,800.000
 SE = 0.03

Pls Sta 102+58.380
 $\Delta s = 1^{\circ}21'10.1''$
 Ls = 85.000
 LT = 56.668
 ST = 28.335

SR 1327 / SR 1410 TRAFFIC DATA

SR 1327	2005 ADT	2025 ADT
920	1400	1400
220	300	560
18680	27400	800
340	500	1400
		2200
		3000

SEE SHEET NO. 2D FOR ALL DITCH DETAILS.
 SEE SHEET NO. 2D FOR ALL DRIVEWAY DETAILS.
 SEE SHEET NO. 34 FOR NBL & SBL GRADES AND PROFILES AND ALL DITCH GRADES AND PROFILES.
 SEE SHEET NO. 63 FOR -YA- & -YB- GRADES AND PROFILES AND ALL DITCH GRADES AND PROFILES.

MATCHLINE STA. 102+00 SEE SHEET 5