

**METRIC**

5 0 10

CONST. REV.

R/W REV.

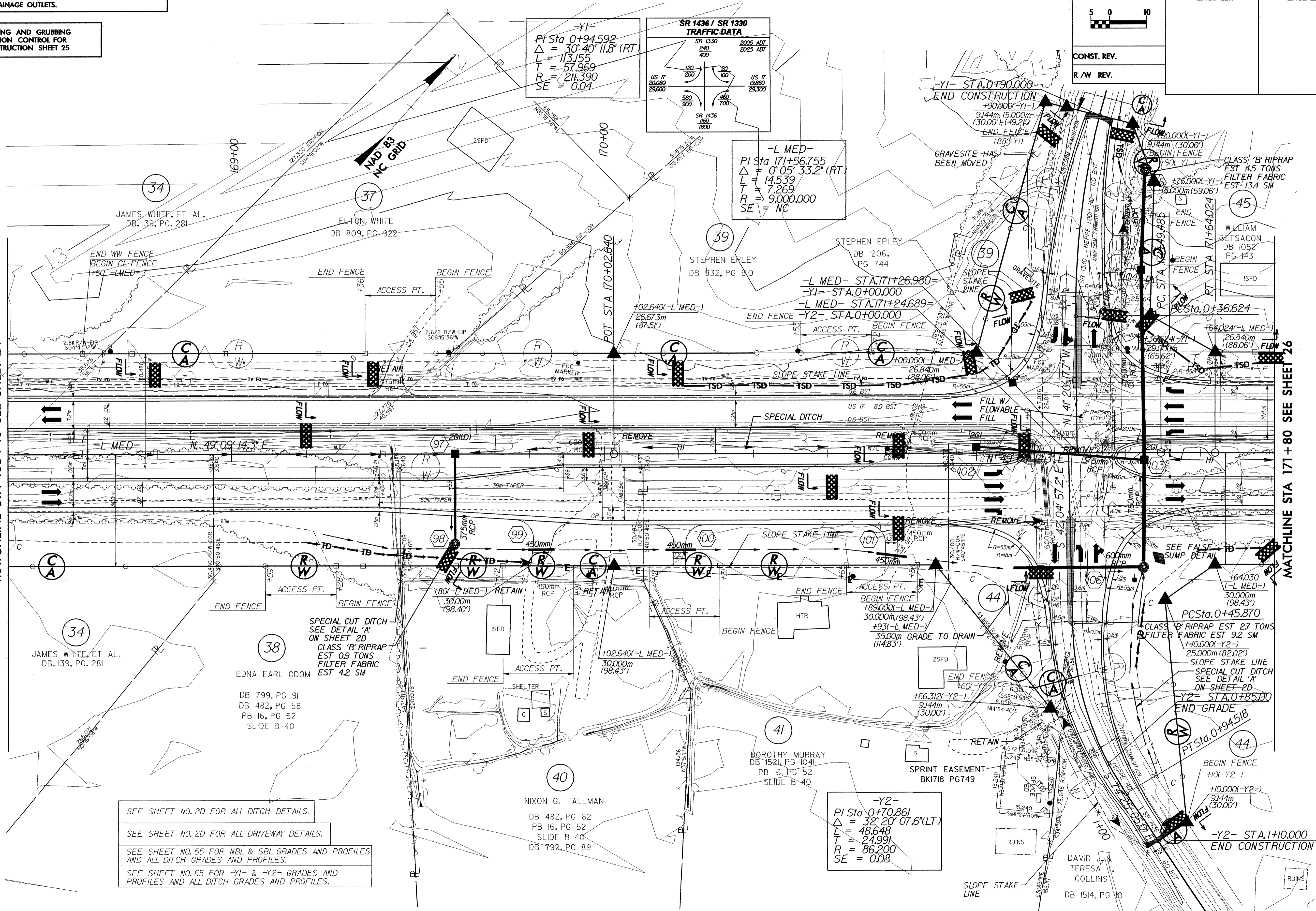
PROJECT REFERENCE NO. R-2514A	SHEET NO. EC-26/CONST. 25
R/W SHEET NO.	
ROADWAY DESIGN ENGINEER	HYDRAULICS ENGINEER

NOTE:  
PLACE TEMPORARY ROCK SEDIMENT DAMS TYPE-B AND TEMPORARY ROCK SILT CHECKS TYPE-A AT DRAINAGE OUTLETS.

CLEARING AND GRUBBING EROSION CONTROL FOR CONSTRUCTION SHEET 25

MATCHLINE STA 168+40 SEE SHEET 24

MATCHLINE STA 171+80 SEE SHEET 26



SEE SHEET NO. 2D FOR ALL DITCH DETAILS.

SEE SHEET NO. 2D FOR ALL DRIVEWAY DETAILS.

SEE SHEET NO. 55 FOR NBL & SBL GRADES AND PROFILES AND ALL DITCH GRADES AND PROFILES.

SEE SHEET NO. 65 FOR -Y1- & -Y2- GRADES AND PROFILES AND ALL DITCH GRADES AND PROFILES.

-Y2-  
PI Sta 0+70.861  
 $\Delta = 32^{\circ} 20' 07.6''$  (LT)  
L = 48.648  
T = 24.991  
R = 86.200  
SE = 0.08

-Y1-  
PI Sta 0+94.592  
 $\Delta = 30^{\circ} 40' 11.8''$  (RT)  
L = 113.155  
T = 57.969  
R = 211.390  
SE = 0.04

-L MED-  
PI Sta 171+56.755  
 $\Delta = 0^{\circ} 05' 33.2''$  (RT)  
L = 14.539  
T = 7.269  
R = 9.000.000  
SE = NC

PC Sta. 0+45.870  
CLASS 'B' RIPRAP EST 27 TONS  
FILTER FABRIC EST 9.2 SM  
+40.000(-Y2-)  
25.000m (82.02')  
SLOPE STAKE LINE  
SPECIAL CUT DITCH  
SEE DETAIL 'A'  
ON SHEET 2D  
-Y2- STA. 0+85.00  
END GRADE

CLASS 'B' RIPRAP  
EST 45 TONS  
FILTER FABRIC  
EST 13.4 SM  
+8.000(-Y1-)  
18.000m (59.06')

PC Sta. 0+36.624  
CLASS 'B' RIPRAP EST 45 TONS  
FILTER FABRIC EST 13.4 SM  
+8.000(-Y1-)  
18.000m (59.06')

-Y2- STA. 1+10.000  
END CONSTRUCTION  
+10.000(-Y2-)  
9.144m (30.00')

-L MED- STA. 171+26.980=  
-Y1- STA. 0+00.000  
-L MED- STA. 171+24.689=  
-Y2- STA. 0+00.000

SPECIAL CUT DITCH  
SEE DETAIL 'A'  
ON SHEET 2D  
CLASS 'B' RIPRAP  
EST 0.9 TONS  
FILTER FABRIC  
EST 4.2 SM

-Y1- STA. 0+90.000  
END CONSTRUCTION  
+90.000(-Y1-)  
9.144m (30.00')  
(30.00') (49.21')

FILL W/  
FLOWABLE  
FILL

DAVID J. & TERESA COLLINS  
DB 1514, PG 10

NIXON G. TALLMAN  
DB 482, PG 62  
PB 16, PG 52  
SLIDE B-40  
DB 799, PG 89

EDNA EARL ODOM  
DB 799, PG 91  
DB 482, PG 58  
PB 16, PG 52  
SLIDE B-40

DOROTHY MURRAY  
DB 1521, PG 1041  
PB 16, PG 52  
SLIDE B-40

JAMES WHITE, ET AL.  
DB. 139, PG. 281

JAMES WHITE, ET AL.  
DB. 139, PG. 281

ELTON WHITE  
DB 809, PG. 922

STEPHEN EPLEY  
DB 932, PG 910

STEPHEN EPLEY  
DB 1206,  
PG 744

WILLIAM BETSACON  
DB 1052  
PG 143

NIXON G. TALLMAN  
DB 482, PG 62  
PB 16, PG 52  
SLIDE B-40  
DB 799, PG 89