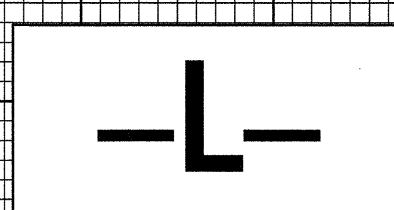


5/14/99

04-NOV-2003 10:43
R:\P\03\B3470\B1
J\mngc AL B018652

PROJECT REFERENCE NO. B-3470	SHEET NO. 5
ROADWAY DESIGN ENGINEER 11-14-03 NORTH CAROLINA PROFESSIONAL SEAL 17691 RICHARD A. SHILLING, INC.	HYDRAULICS ENGINEER NORTH CAROLINA PROFESSIONAL SEAL 22100 STEPHEN P. ANDERSON, INC.

BM *2 CHISLED X ON EAST END OF CONCRETE HEAD WALL
S 87° 58' 32.63" W 790.50' FROM -L- STA 13+00.00
ELEV. 2665.80



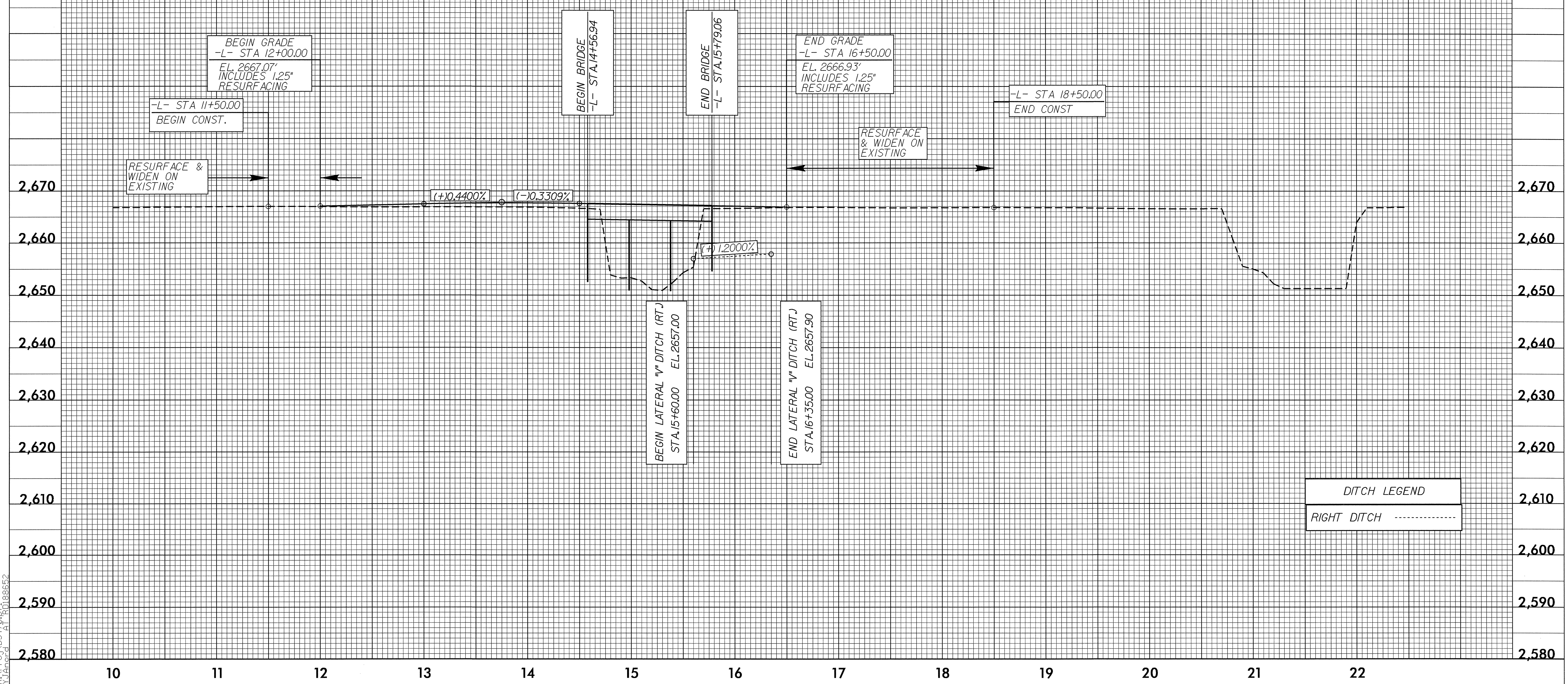
BRIDGE HYDRAULIC DATA

DESIGN DISCHARGE = N/A CFS
 DESIGN FREQUENCY = 50 YRS
 DESIGN HW ELEVATION = 2663.0 FT
 BASE DISCHARGE = N/A CFS
 BASE FREQUENCY = 100 YRS
 BASE HW ELEVATION = 2664.8 FT
 OVERTOPPING DISCHARGE = N/A CFS
 OVERTOPPING FREQUENCY = 100+ YRS
 OVERTOPPING ELEVATION = 2666.7 FT
 ESTIMATED NORMAL W.S. ELEV. = 2652.9 FT
 DATE OF SURVEY = 9/12/02
 W.S. ELEVATION AT DATE OF SURVEY = 2652.9 FT

BM *3 8" SPIKE IN BASE OF 15" CHERRY TREE
72.97' LEFT OF -L- STA 15+07.27
ELEV. 2656.80

PI = 13+75.00
EL = 2667.84'
VC = 150'
K = 195

BM *4 NCGS MONUMENT "NBA 5" ON EAST ABUTMENT OF BRIDGE OVER WEST FORK PIGEON RIVER
15.40' RIGHT OF -L- STA 21+97.12
ELEV. 2665.85



DITCH LEGEND
RIGHT DITCH -----