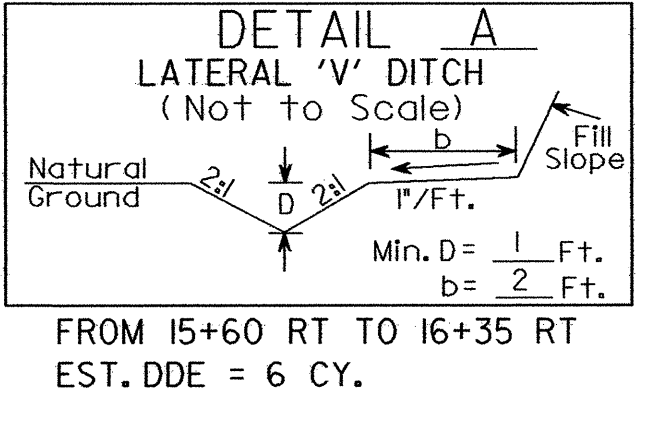


8/17/99

PROJECT REFERENCE NO. B-3470	SHEET NO. EC-3/CONST.4
R/W SHEET NO.	HYDRAULICS ENGINEER
ROADWAY DESIGN ENGINEER	

UTILITY OWNERS
ELECTRICAL
HAYWOOD ELECTRICAL MEMBERSHIP CORP.
1815 ASHEVILLE ROAD
WAYNESVILLE, N.C. 28786
TELEPHONE
BELL SOUTH
240 HENRY AVENUE
ASHEVILLE, N.C. 28806
HAYWOOD CABLE TV
4578 JONATHAN'S CREEK ROAD
WAYNESVILLE, N.C. 28785



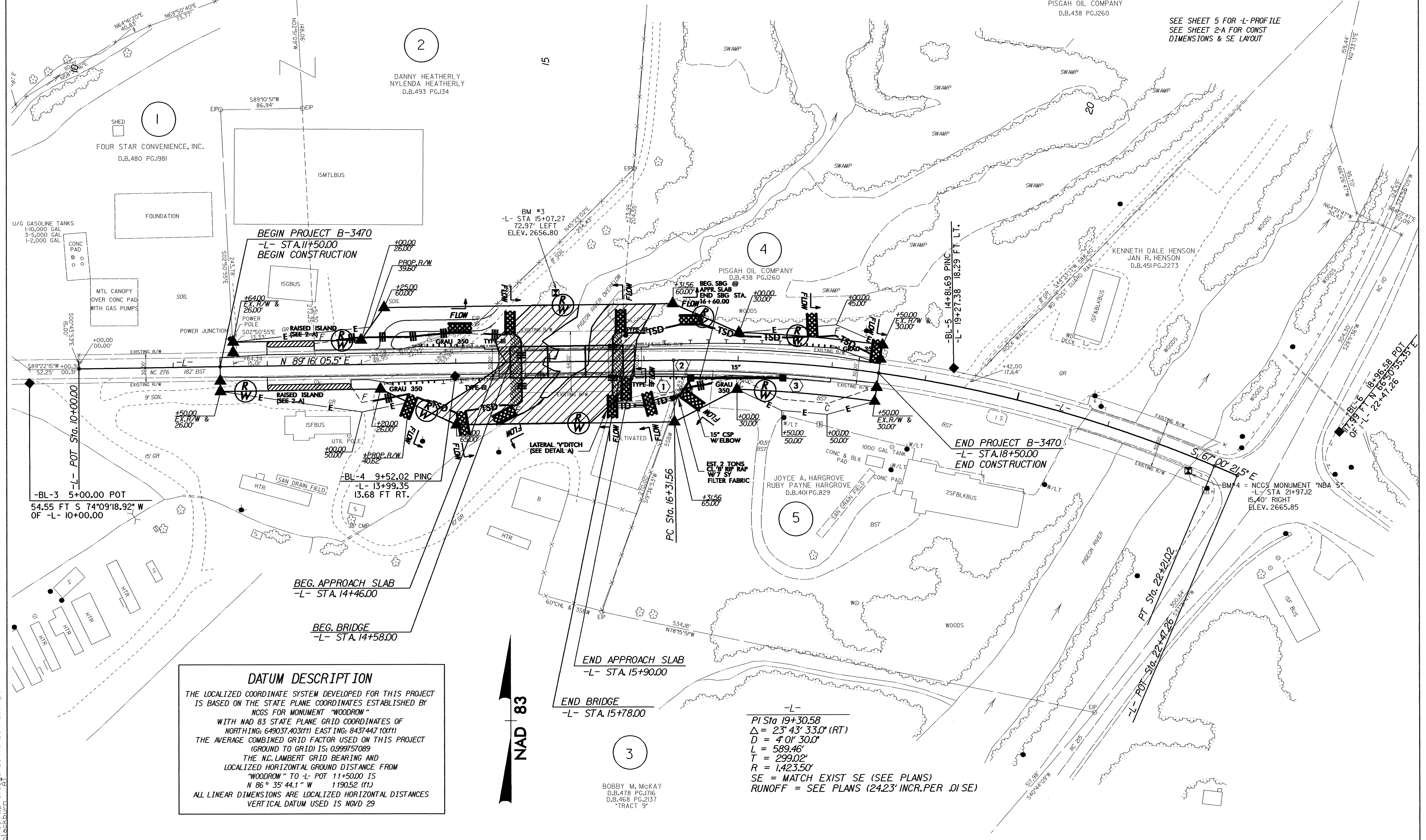
ENVIRONMENTALLY SENSITIVE AREA
SEE PROJECT SPECIAL PROVISIONS

NOTE:
PLACE TEMPORARY ROCK SEDIMENT DAMS TYPE-B AND TEMPORARY ROCK SILT CHECKS TYPE-A AT DRAINAGE OUTLETS.

CLEARING AND GRUBBING
EROSION CONTROL FOR CONSTRUCTION SHEET 4

NOTE:
UTILIZE TEMPORARY ROCK SILT CHECK TYPE - A AS STILLING BASIN WHERE APPLICABLE.

SEE SHEET 5 FOR -L- PROFILE
SEE SHEET 2-A FOR CONST
DIMENSIONS & SE LAYOUT



DATUM DESCRIPTION
THE LOCALIZED COORDINATE SYSTEM DEVELOPED FOR THIS PROJECT IS BASED ON THE STATE PLANE COORDINATES ESTABLISHED BY NCGS FOR MONUMENT "WOODROW" WITH NAD 83 STATE PLANE GRID COORDINATES OF NORTHING: 649037.403(11) EASTING: 8437447.10(11) THE AVERAGE COMBINED GRID FACTOR USED ON THIS PROJECT (GROUND TO GRID) IS: 0.999757089 THE N.C. LAMBERT GRID BEARING AND LOCALIZED HORIZONTAL GROUND DISTANCE FROM "WOODROW" TO -L- POT 11+50.00 IS N 86° 35' 44.1" W 1190.52 (11) ALL LINEAR DIMENSIONS ARE LOCALIZED HORIZONTAL DISTANCES VERTICAL DATUM USED IS NGVD 29

NAD 83

-L-
PI Sta 19+30.58
Δ = 23° 43' 33.0" (RT)
D = 4' 01" 30.0"
L = 589.46'
T = 299.02'
R = 1,423.50'
SE = MATCH EXIST SE (SEE PLANS)
RUNOFF = SEE PLANS (24.23' INCR. PER .01 SE)

BOBBY M. MCKAY
D.B.478 PG.1716
D.B.438 PG.2137
TRACT 9'

14-OCT-2003 09:19
DR:\p\td\p\br\ridge\163470\B3470s04.psh
blackburn